

**FREEDOM OF INFORMATION  
AND  
PRIVACY ACTS**

**SUBJECT: CUSTODIAL DETENTION  
SECURITY INDEX**

**FILE NUMBER: 100-358086**

**SECTION : 46**



**FEDERAL BUREAU OF INVESTIGATION**

---

## NOTICE

**THE BEST COPIES OBTAINABLE ARE INCLUDED IN THE REPRODUCTION OF THE FILE. PAGES INCLUDED THAT ARE BLURRED, LIGHT OR OTHERWISE DIFFICULT TO READ ARE THE RESULT OF THE CONDITION AND OR COLOR OF THE ORIGINALS PROVIDED. THESE ARE THE BEST COPIES AVAILABLE.**

---

UNITED STATES GOVERNMENT

*Memorandum*

TO :

DATE: February 10, 1960

FROM :

SUBJECT: DELINQUENCY IN SECURITY INVESTIGATIONS

SYNOPSIS:

Each month we follow the field closely on the status of security work by analyzing the backlog of pending cases and delinquency in espionage, internal security, security matter and foreign intelligence cases in classifications 65, 100 and 105. Status of these cases as of January 31, 1960, is set forth below.

In January, there was a decrease in pending active matters in the entire field in the security classifications from 15,896 to 15,540. Delinquent matters increased from 1,475 to 1,798. The percentage of delinquent matters increased from 9.2% to 11.6%.

Letters are being sent to the offices indicated by asterisks on page four herein, commenting on their delinquency and pointing out the necessity of bringing their security cases to a current status.

RECOMMENDATION:

The field will continue to be followed closely regarding security delinquency and you will be advised of the results of the review of the February, 1960, administrative reports.

Memorandum for  
RE: DELINQUENCY IN SECURITY INVESTIGATIONS

DETAILS:

The January, 1960, administrative reports from all offices reflect that the total pending active matters in classifications 65, 100 and 105 decreased from 15,896 to 15,540. Delinquent items increased from 1,475 to 1,798. The percentage of delinquent items increased from 9.2% to 11.6%.

The following statistics reflect the status of pending work, including both pending active and pending inactive matters, and delinquency for all field divisions for the last four months.

TOTAL PENDING MATTERS  
CLASSIFICATIONS 65, 100 AND 105  
ALL FIELD DIVISIONS

| <u>Classification</u> | <u>10/31/59</u> | <u>11/30/59</u> | <u>12/31/59</u> | <u>1/31/60</u> |
|-----------------------|-----------------|-----------------|-----------------|----------------|
| 65                    | 567             | 570             | 527             | 634            |
| 100                   | 10,707          | 10,814          | 10,949          | 10,337         |
| 105                   | <u>6,379</u>    | <u>6,771</u>    | <u>6,632</u>    | <u>6,747</u>   |
| Total                 | 17,653          | 18,155          | 18,108          | 17,718         |

TOTAL DELINQUENT MATTERS  
CLASSIFICATIONS 65, 100 AND 105  
ALL FIELD DIVISIONS

| <u>Classification</u> | <u>10/31/59</u> | <u>11/30/59</u> | <u>12/31/59</u> | <u>1/31/60</u> |
|-----------------------|-----------------|-----------------|-----------------|----------------|
| 65                    | 22              | 37              | 31              | 24             |
| 100                   | 961             | 908             | 897             | 1082           |
| 105                   | <u>579</u>      | <u>611</u>      | <u>547</u>      | <u>692</u>     |
| Total                 | 1,562           | 1,556           | 1,475           | 1,798          |



Memorandum for  
RE: DELINQUENCY IN SECURITY INVESTIGATIONS

The following statistics reflect the total of pending active matters, delinquency and percentage of delinquency of all offices during the past six months.

CLASSIFICATIONS 65, 100 AND 105  
ALL FIELD DIVISIONS

| <u>Date</u> | <u>Pending Active Matters</u> | <u>Delinquent Matters</u> | <u>Percentage Delinquent</u> |
|-------------|-------------------------------|---------------------------|------------------------------|
| 8/31/59     | 17,838                        | 2,268                     | 12.7%                        |
| 9/30/59     | 16,572                        | 1,914                     | 11.5%                        |
| 10/31/59    | 15,432                        | 1,562                     | 10.1%                        |
| 11/30/59    | 15,694                        | 1,556                     | 9.8%                         |
| 12/31/59    | 15,896                        | 1,475                     | 9.2%                         |
| 1/31/60     | 15,540                        | 1,798                     | 11.6%                        |

Status of Security Work by Individual Office

Each office is listed according to the percentage of delinquency on January 31, 1960, in total matters in classifications 65, 100 and 105. These statistics reflect the progress during January, 1960.

2717

Memorandum for  
 RE: DELINQUENCY IN SECURITY INVESTIGATIONS

| Office        | Active Matters |         | Percentage Delinquent |         |
|---------------|----------------|---------|-----------------------|---------|
|               | 12/31/59       | 1/31/60 | 12/31/59              | 1/31/60 |
| *Phoenix      | 48             | 49      | 8.3%                  | 34.7%   |
| *Miami        | 324            | 352     | 13.3%                 | 30.0%   |
| *Detroit      | 681            | 605     | 11.7%                 | 20.2%   |
| *Norfolk      | 30             | 26      | 3.3%                  | 19.2%   |
| *New York     | 3808           | 3818    | 11.5%                 | 15.4%   |
| *Milwaukee    | 117            | 125     | 9.4%                  | 15.1%   |
| Los Angeles   | 1635           | 1497    | 10.0%                 | 14.2%   |
| Baltimore     | 346            | 346     | 11.6%                 | 13.0%   |
| Cleveland     | 433            | 380     | 14.8%                 | 12.9%   |
| Newark        | 788            | 787     | 7.1%                  | 12.5%   |
| Indianapolis  | 186            | 173     | 13.0%                 | 12.1%   |
| Charlotte     | 63             | 51      | 9.5%                  | 11.8%   |
| Chicago       | 1108           | 1048    | 8.0%                  | 11.7%   |
| Buffalo       | 305            | 292     | 14.4%                 | 11.6%   |
| San Diego     | 116            | 107     | 0.0%                  | 11.2%   |
| Oklahoma City | 27             | 30      | 11.1%                 | 10.0%   |
| San Francisco | 1047           | 1022    | 6.7%                  | 10.0%   |
| Albany        | 163            | 146     | 8.6%                  | 9.5%    |
| Atlanta       | 79             | 102     | 10.1%                 | 8.8%    |
| St. Louis     | 113            | 115     | 8.8%                  | 8.7%    |
| Pittsburgh    | 277            | 214     | 16.0%                 | 8.4%    |
| Boston        | 426            | 374     | 8.5%                  | 8.0%    |
| Cincinnati    | 103            | 115     | 8.7%                  | 7.6%    |
| Houston       | 52             | 40      | 1.9%                  | 7.5%    |
| New Orleans   | 17             | 56      | 6.5%                  | 7.1%    |
| Philadelphia  | 535            | 482     | 15.1%                 | 6.2%    |
| Seattle       | 406            | 387     | 8.4%                  | 6.2%    |
| Kansas City   | 15             | 105     | 3.0%                  | 6.0%    |
| Portland      | 96             | 125     | 5.2%                  | 5.6%    |
| New Haven     | 338            | 250     | 11.6%                 | 5.5%    |
| Denver        | 69             | 75      | 7.2%                  | 5.3%    |
| Albuquerque   | 39             | 42      | 2.6%                  | 4.8%    |
| El Paso       | 29             | 23      | 6.9%                  | 4.3%    |
| Dallas        | 55             | 53      | 3.6%                  | 3.8%    |
| Minneapolis   | 177            | 288     | 3.4%                  | 3.8%    |

\*Letter being sent re delinquent status.

Memorandum for  
RE: DELINQUENCY IN SECURITY INVESTIGATIONS

| Office           | Active Matters |         | Percentage Delinquent |         |
|------------------|----------------|---------|-----------------------|---------|
|                  | 12/31/59       | 1/31/60 | 12/31/59              | 1/31/60 |
| Richmond         | 44             | 33      | 9.0%                  | 3.0%    |
| Omaha            | 49             | 70      | 5.0%                  | 2.9%    |
| Jacksonville     | 42             | 43      | 7.1%                  | 2.3%    |
| Mobile           | 62             | 45      | 0.0%                  | 2.2%    |
| Washington Field | 1083           | 1098    | 1.5%                  | 2.1%    |
| Knoxville        | 16             | 11      | 18.8%                 | 0.0%    |
| Little Rock      | 18             | 12      | 16.7%                 | 0.0%    |
| Louisville       | 26             | 22      | 15.4%                 | 0.0%    |
| Springfield      | 52             | 62      | 9.6%                  | 0.0%    |
| Anchorage        | 12             | 11      | 8.3%                  | 0.0%    |
| Salt Lake City   | 57             | 42      | 5.3%                  | 0.0%    |
| Birmingham       | 36             | 34      | 2.8%                  | 0.0%    |
| San Juan         | 229            | 242     | 1.0%                  | 0.0%    |
| Butte            | 33             | 28      | 0.0%                  | 0.0%    |
| Honolulu         | 19             | 20      | 0.0%                  | 0.0%    |
| Memphis          | 19             | 20      | 0.0%                  | 0.0%    |
| San Antonio      | 19             | 19      | 0.0%                  | 0.0%    |
| Savannah         | 29             | 22      | 0.0%                  | 0.0%    |

## Memorandum

DATE: March 9, 1960

TO :

FROM :

SUBJECT: DELINQUENCY IN SECURITY INVESTIGATIONS

SYNOPSIS:

Each month we follow the field closely on the status of security work by analyzing the backlog of pending cases and delinquency in espionage, internal security, security matter and foreign intelligence cases in classifications GS, 100 and 105. Status of these cases as of February 29, 1960, is set forth below.

In February, there was an increase in pending active matters in the entire field in the security classifications from 15,540 to 15,854. Delinquent matters decreased from 1,798 to 1,511. The percentage of delinquent matters decreased from 11.6% to 9.5%.

Letters are being sent to the offices indicated in Schedule on page four herein, commenting on their delinquency and pointing out the necessity of bringing their security cases to a current status.

RECOMMENDATION:

The field will continue to be followed closely regarding security delinquency and you will be advised of the results of the review of the March, 1960, administrative reports.

Memorandum for  
 RE: DELINQUENCY IN SECURITY INVESTIGATIONS

DETAILS:

The February, 1960, administrative reports from all offices reflect that the total backlog matters in classifications 65, 100 and 105 for 1959 was 18,512 as of 12/31/59. Delinquent items decreased from 1,798 to 1,511. The percentage of delinquent items decreased from 11.7% to 8.2%.

The following statistics reflect the status of pending work, including back pending active and pending inactive matters, and delinquency for all field divisions for the last four months.

TOTAL PENDING MATTERS  
CLASSIFICATIONS 65, 100 AND 105  
ALL FIELD DIVISIONS

| <u>Classification</u> | <u>11/30/59</u> | <u>12/31/59</u> | <u>1/31/60</u> | <u>2/29/60</u> |
|-----------------------|-----------------|-----------------|----------------|----------------|
| 65                    | 570             | 527             | 634            | 577            |
| 100                   | 10,814          | 10,945          | 10,887         | 10,344         |
| 105                   | <u>6,201</u>    | <u>6,632</u>    | <u>6,747</u>   | <u>7,008</u>   |
| Total                 | 18,155          | 18,109          | 17,718         | 17,929         |

TOTAL DELINQUENT MATTERS  
CLASSIFICATIONS 65, 100 AND 105  
ALL FIELD DIVISIONS

| <u>Classification</u> | <u>11/30/59</u> | <u>12/31/59</u> | <u>1/31/60</u> | <u>2/29/60</u> |
|-----------------------|-----------------|-----------------|----------------|----------------|
| 65                    | 37              | 31              | 24             | 21             |
| 100                   | 908             | 897             | 1022           | 855            |
| 105                   | <u>611</u>      | <u>547</u>      | <u>692</u>     | <u>635</u>     |
| Total                 | 1,556           | 1,475           | 1,798          | 1,511          |

Memorandum for  
RE: DELINQUENCY IN SECURITY INVESTIGATIONS

The following statistics reflect the total of pending active matters, delinquency and percentage of delinquency of all offices during the past six months.

CLASSIFICATIONS 65, 100 AND 105  
ALL FIELD DIVISIONS

| <u>Date</u> | <u>Pending<br/>Active Matters</u> | <u>Delinquent<br/>Matters</u> | <u>Percentage<br/>Delinquent</u> |
|-------------|-----------------------------------|-------------------------------|----------------------------------|
| 9/30/59     | 16,572                            | 1,914                         | 11.5%                            |
| 10/31/59    | 15,432                            | 1,562                         | 10.1%                            |
| 11/30/59    | 15,894                            | 1,556                         | 9.8%                             |
| 12/31/59    | 15,896                            | 1,475                         | 9.2%                             |
| 1/31/60     | 15,510                            | 1,758                         | 11.6%                            |
| 2/29/60     | 15,854                            | 1,511                         | 9.5%                             |

Status of Security Work by Individual Office

Each office is listed according to the percentage of delinquency on February 29, 1960, in total matters in classifications 65, 100 and 105. These statistics reflect the progress during February, 1960.

Memorandum for  
 RE: DELINQUENCY IN SECURITY INVESTIGATIONS

| Office         | Active Matters |         | Percentage Delinquent |         |
|----------------|----------------|---------|-----------------------|---------|
|                | 1/31/60        | 2/29/60 | 1/31/60               | 2/29/60 |
| *Oklahoma City | 30             | 22      | 10.0%                 | 27.3%   |
| *Phoenix       | 49             | 48      | 34.7%                 | 27.1%   |
| *Miami         | 358            | 383     | 30.0%                 | 22.0%   |
| *Denver        | 75             | 98      | 5.3%                  | 23.5%   |
| *Detroit       | 605            | 555     | 20.3%                 | 22.5%   |
| *Chicago       | 1048           | 1021    | 11.7%                 | 15.9%   |
| New York       | 3818           | 3830    | 15.4%                 | 10.0%   |
| Charlotte      | 51             | 52      | 11.8%                 | 13.5%   |
| Buffalo        | 202            | 282     | 11.0%                 | 11.7%   |
| Newark         | 787            | 743     | 12.5%                 | 11.0%   |
| Cleveland      | 380            | 477     | 12.9%                 | 10.0%   |
| Baltimore      | 346            | 335     | 13.0%                 | 10.2%   |
| Albany         | 146            | 159     | 9.5%                  | 10.0%   |
| Springfield    | 62             | 42      | 0.0%                  | 9.5%    |
| San Francisco  | 1022           | 1318    | 10.0%                 | 9.5%    |
| St. Louis      | 115            | 118     | 8.7%                  | 9.3%    |
| Little Rock    | 12             | 11      | 0.0%                  | 9.1%    |
| San Diego      | 107            | 113     | 11.0%                 | 8.5%    |
| Los Angeles    | 1497           | 1387    | 14.2%                 | 8.5%    |
| New Haven      | 250            | 251     | 8.0%                  | 8.0%    |
| New Orleans    | 56             | 65      | 7.1%                  | 7.7%    |
| Houston        | 40             | 27      | 7.5%                  | 7.4%    |
| Boston         | 374            | 358     | 8.0%                  | 7.3%    |
| Seattle        | 387            | 352     | 6.2%                  | 6.7%    |
| Pittsburgh     | 314            | 227     | 3.4%                  | 6.6%    |
| Indianapolis   | 173            | 184     | 12.1%                 | 6.5%    |
| Kansas City    | 165            | 116     | 6.0%                  | 6.0%    |
| Philadelphia   | 400            | 518     | 6.3%                  | 5.3%    |
| Milwaukee      | 125            | 118     | 15.1%                 | 5.1%    |
| Omaha          | 70             | 60      | 2.9%                  | 5.0%    |
| Louisville     | 22             | 22      | 0.0%                  | 4.5%    |
| Norfolk        | 26             | 22      | 19.2%                 | 4.5%    |
| Jacksonville   | 43             | 45      | 2.3%                  | 4.4%    |
| Atlanta        | 102            | 97      | 8.8%                  | 4.1%    |
| Honolulu       | 20             | 25      | 0.0%                  | 4.0%    |

\*Letter being sent re delinquent status.

Memorandum for  
RE: DELINQUENCY IN SECURITY INVESTIGATIONS

| Office           | Active Matters |         | Percentage Delinquent |         |
|------------------|----------------|---------|-----------------------|---------|
|                  | 1/31/60        | 2/29/60 | 1/31/60               | 2/29/60 |
| Birmingham       | 34             | 34      | 0.0%                  | 2.9%    |
| Minneapolis      | 288            | 295     | 3.8%                  | 2.4%    |
| Portland         | 125            | 106     | 5.6%                  | 1.9%    |
| Salt Lake City   | 42             | 54      | 0.0%                  | 1.9%    |
| Washington Field | 1098           | 1238    | 2.1%                  | 1.9%    |
| Albuquerque      | 42             | 40      | 4.8%                  | 0.0%    |
| Anchorage        | 11             | 11      | 0.0%                  | 0.0%    |
| Butte            | 28             | 31      | 0.0%                  | 0.0%    |
| Cincinnati       | 115            | 113     | 7.8%                  | 0.0%    |
| Dallas           | 53             | 48      | 3.8%                  | 0.0%    |
| El Paso          | 23             | 31      | 4.3%                  | 0.0%    |
| Knoxville        | 11             | 10      | 0.0%                  | 0.0%    |
| Memphis          | 20             | 18      | 0.0%                  | 0.0%    |
| Mobile           | 45             | 18      | 2.2%                  | 0.0%    |
| Richmond         | 33             | 27      | 3.0%                  | 0.0%    |
| Savannah         | 22             | 22      | 0.0%                  | 0.0%    |
| San Antonio      | 19             | 18      | 0.0%                  | 0.0%    |
| San Juan         | 242            | 252     | 0.0%                  | 0.0%    |



UNITED STATES GOVERNMENT

270.

*Memorandum*

TO :

DATE: 2-12-60

FROM :

SUBJECT: SECURITY INDEX

During the past week, 11 cards were added to the Security Index and 32 cards were cancelled, a net decrease of 21 cards.

The Security Index count as of today is 12,400.

ACTION:

None. For your information.



## Memorandum

TO : Mr. ~~\_\_\_\_\_~~VNR.  
DATE: 3-21-60FROM : Mr. ~~\_\_\_\_\_~~

SUBJECT: SECURITY INDEX LISTS

Enclosed herewith is one copy each of the following lists for transmittal to the SAC, Quantico, for storage with other vital records maintained by him:

- 1) Alphabetical list of Security Index (SI) subjects.
- 2) Geographical list of SI subjects.
- 3) Special Section of the SI.
- 4) List of key figures and top functionaries.
- 5) List of SI subjects out of the country.
- 6) List of missing SI subjects.
- 7) List of subjects whose citizenship status is unknown.
- 8) List of aliens.
- 9) List of SI subjects of Chinese descent.
- 10) List of SI subjects sympathetic to communist China.

The SAC should destroy by burning the lists furnished in February, 1960. When this action has been taken, he should so note on this memorandum and return it to the Subversive Control Section.

ACTION:

If you approve, this memorandum and the attached lists will be forwarded to Quantico for the above action.

Enclosures  
100-353026

1 - SAC, Quantico  
1 - Mr. ~~\_\_\_\_\_~~

JJH:baw  
(3)

100-353026-10  
NOT RECORDED

10 MAR 25 1960

Handled at Quantico  
3-23-60 JWR



Memorandum

DATE: 3/15/50

TO :

FROM :

SUBJECT: SECURITY INDEX CARD STATISTICS

There were 12,152 persons represented in the Security Index (as of March 15, 1950). Of the total, 10,600 or 86.7 per cent are on "A" cards.

A detailed table, enclosed in duplicate, dated March 15, 1950, was also prepared by this office, showing the number of persons on "A" cards, "B" cards, citizenship, and "Special Agents" in New York State, and is enclosed.

Enclosures



KEY TO ABBREVIATIONS USED IN SECURITY IND.

AL Alien  
DC Deacon  
EP Espionage  
NA Naturalized  
  
NB Native Born  
TF Top Functionary  
UN Unknown  
AEP Atomic Energy Program Employees  
  
COM Communist Party, USA  
ESP Espionage Subjects  
FGE Foreign Government Employees  
  
GGV United States Government Employees  
ISL Independent Socialist League  
JFG Johnson Forest Group  
  
NOI Nation of Islam  
MIS Miscellaneous  
NPR Nationalistic Party of Puerto Rico  
PPA Proletarian Party of America  
  
RUS Russian  
ASC American Socialist Clubs  
SWP Socialist Workers' Party  
UNE United Nations Employees  
  
UPR Union of the People for the Establishment  
of the Republic of Puerto Rico  
YUG Yugoslavain

KEY TO ABBREVIATIONS USED IN SECURITY INDEX

2723  
(ENCL.)

AL Alien  
DC Detcom  
KF Key Figure  
NA Naturalized  
  
NB Native Born  
TF Top Functionary  
UH Unknown  
AEP Atomic Energy Program Employees  
  
COM Communist Party, USA  
ESP Espionage Subjects  
FGE Foreign Government Employees  
  
GCV United States Government Employees  
ISL Independent Socialist League  
JFG Johnson Forest Group  
  
NOI Nation of Islam  
MIS Miscellaneous  
NPR Nationalistic Party of Puerto Rico  
PPA Proletarian Party of America  
  
RUS Russian  
ASC American Socialist Clubs  
SWP Socialist Workers' Party  
UNE United Nations Employees  
  
UPR Union of the People for the Establishment  
of the Republic of Puerto Rico  
YUG Yugoslavain



270E  
(Eric)

UNITED STATES DEPARTMENT OF AGRICULTURE  
BUREAU OF PLANT INDUSTRY  
WASHINGTON, D. C.

| No. | Cultivar |   |   |   |   |   |   |   |   |    | Total | No. of plants | No. of flowers | No. of fruits | No. of seeds | No. of pods | No. of leaves | No. of stems | No. of roots | No. of tubers | No. of other parts |    |
|-----|----------|---|---|---|---|---|---|---|---|----|-------|---------------|----------------|---------------|--------------|-------------|---------------|--------------|--------------|---------------|--------------------|----|
|     | 1        | 2 | 3 | 4 | 5 | 6 | 7 | 8 | 9 | 10 |       |               |                |               |              |             |               |              |              |               |                    |    |
| 1   | 1        | 1 | 1 | 1 | 1 | 1 | 1 | 1 | 1 | 1  | 10    | 10            | 10             | 10            | 10           | 10          | 10            | 10           | 10           | 10            | 10                 | 10 |
| 2   | 1        | 1 | 1 | 1 | 1 | 1 | 1 | 1 | 1 | 1  | 10    | 10            | 10             | 10            | 10           | 10          | 10            | 10           | 10           | 10            | 10                 | 10 |
| 3   | 1        | 1 | 1 | 1 | 1 | 1 | 1 | 1 | 1 | 1  | 10    | 10            | 10             | 10            | 10           | 10          | 10            | 10           | 10           | 10            | 10                 | 10 |
| 4   | 1        | 1 | 1 | 1 | 1 | 1 | 1 | 1 | 1 | 1  | 10    | 10            | 10             | 10            | 10           | 10          | 10            | 10           | 10           | 10            | 10                 | 10 |
| 5   | 1        | 1 | 1 | 1 | 1 | 1 | 1 | 1 | 1 | 1  | 10    | 10            | 10             | 10            | 10           | 10          | 10            | 10           | 10           | 10            | 10                 | 10 |
| 6   | 1        | 1 | 1 | 1 | 1 | 1 | 1 | 1 | 1 | 1  | 10    | 10            | 10             | 10            | 10           | 10          | 10            | 10           | 10           | 10            | 10                 | 10 |
| 7   | 1        | 1 | 1 | 1 | 1 | 1 | 1 | 1 | 1 | 1  | 10    | 10            | 10             | 10            | 10           | 10          | 10            | 10           | 10           | 10            | 10                 | 10 |
| 8   | 1        | 1 | 1 | 1 | 1 | 1 | 1 | 1 | 1 | 1  | 10    | 10            | 10             | 10            | 10           | 10          | 10            | 10           | 10           | 10            | 10                 | 10 |
| 9   | 1        | 1 | 1 | 1 | 1 | 1 | 1 | 1 | 1 | 1  | 10    | 10            | 10             | 10            | 10           | 10          | 10            | 10           | 10           | 10            | 10                 | 10 |
| 10  | 1        | 1 | 1 | 1 | 1 | 1 | 1 | 1 | 1 | 1  | 10    | 10            | 10             | 10            | 10           | 10          | 10            | 10           | 10           | 10            | 10                 | 10 |
| 11  | 1        | 1 | 1 | 1 | 1 | 1 | 1 | 1 | 1 | 1  | 10    | 10            | 10             | 10            | 10           | 10          | 10            | 10           | 10           | 10            | 10                 | 10 |
| 12  | 1        | 1 | 1 | 1 | 1 | 1 | 1 | 1 | 1 | 1  | 10    | 10            | 10             | 10            | 10           | 10          | 10            | 10           | 10           | 10            | 10                 | 10 |
| 13  | 1        | 1 | 1 | 1 | 1 | 1 | 1 | 1 | 1 | 1  | 10    | 10            | 10             | 10            | 10           | 10          | 10            | 10           | 10           | 10            | 10                 | 10 |
| 14  | 1        | 1 | 1 | 1 | 1 | 1 | 1 | 1 | 1 | 1  | 10    | 10            | 10             | 10            | 10           | 10          | 10            | 10           | 10           | 10            | 10                 | 10 |
| 15  | 1        | 1 | 1 | 1 | 1 | 1 | 1 | 1 | 1 | 1  | 10    | 10            | 10             | 10            | 10           | 10          | 10            | 10           | 10           | 10            | 10                 | 10 |
| 16  | 1        | 1 | 1 | 1 | 1 | 1 | 1 | 1 | 1 | 1  | 10    | 10            | 10             | 10            | 10           | 10          | 10            | 10           | 10           | 10            | 10                 | 10 |
| 17  | 1        | 1 | 1 | 1 | 1 | 1 | 1 | 1 | 1 | 1  | 10    | 10            | 10             | 10            | 10           | 10          | 10            | 10           | 10           | 10            | 10                 | 10 |
| 18  | 1        | 1 | 1 | 1 | 1 | 1 | 1 | 1 | 1 | 1  | 10    | 10            | 10             | 10            | 10           | 10          | 10            | 10           | 10           | 10            | 10                 | 10 |
| 19  | 1        | 1 | 1 | 1 | 1 | 1 | 1 | 1 | 1 | 1  | 10    | 10            | 10             | 10            | 10           | 10          | 10            | 10           | 10           | 10            | 10                 | 10 |
| 20  | 1        | 1 | 1 | 1 | 1 | 1 | 1 | 1 | 1 | 1  | 10    | 10            | 10             | 10            | 10           | 10          | 10            | 10           | 10           | 10            | 10                 | 10 |
| 21  | 1        | 1 | 1 | 1 | 1 | 1 | 1 | 1 | 1 | 1  | 10    | 10            | 10             | 10            | 10           | 10          | 10            | 10           | 10           | 10            | 10                 | 10 |
| 22  | 1        | 1 | 1 | 1 | 1 | 1 | 1 | 1 | 1 | 1  | 10    | 10            | 10             | 10            | 10           | 10          | 10            | 10           | 10           | 10            | 10                 | 10 |
| 23  | 1        | 1 | 1 | 1 | 1 | 1 | 1 | 1 | 1 | 1  | 10    | 10            | 10             | 10            | 10           | 10          | 10            | 10           | 10           | 10            | 10                 | 10 |
| 24  | 1        | 1 | 1 | 1 | 1 | 1 | 1 | 1 | 1 | 1  | 10    | 10            | 10             | 10            | 10           | 10          | 10            | 10           | 10           | 10            | 10                 | 10 |
| 25  | 1        | 1 | 1 | 1 | 1 | 1 | 1 | 1 | 1 | 1  | 10    | 10            | 10             | 10            | 10           | 10          | 10            | 10           | 10           | 10            | 10                 | 10 |
| 26  | 1        | 1 | 1 | 1 | 1 | 1 | 1 | 1 | 1 | 1  | 10    | 10            | 10             | 10            | 10           | 10          | 10            | 10           | 10           | 10            | 10                 | 10 |
| 27  | 1        | 1 | 1 | 1 | 1 | 1 | 1 | 1 | 1 | 1  | 10    | 10            | 10             | 10            | 10           | 10          | 10            | 10           | 10           | 10            | 10                 | 10 |
| 28  | 1        | 1 | 1 | 1 | 1 | 1 | 1 | 1 | 1 | 1  | 10    | 10            | 10             | 10            | 10           | 10          | 10            | 10           | 10           | 10            | 10                 | 10 |
| 29  | 1        | 1 | 1 | 1 | 1 | 1 | 1 | 1 | 1 | 1  | 10    | 10            | 10             | 10            | 10           | 10          | 10            | 10           | 10           | 10            | 10                 | 10 |
| 30  | 1        | 1 | 1 | 1 | 1 | 1 | 1 | 1 | 1 | 1  | 10    | 10            | 10             | 10            | 10           | 10          | 10            | 10           | 10           | 10            | 10                 | 10 |
| 31  | 1        | 1 | 1 | 1 | 1 | 1 | 1 | 1 | 1 | 1  | 10    | 10            | 10             | 10            | 10           | 10          | 10            | 10           | 10           | 10            | 10                 | 10 |
| 32  | 1        | 1 | 1 | 1 | 1 | 1 | 1 | 1 | 1 | 1  | 10    | 10            | 10             | 10            | 10           | 10          | 10            | 10           | 10           | 10            | 10                 | 10 |
| 33  | 1        | 1 | 1 | 1 | 1 | 1 | 1 | 1 | 1 | 1  | 10    | 10            | 10             | 10            | 10           | 10          | 10            | 10           | 10           | 10            | 10                 | 10 |
| 34  | 1        | 1 | 1 | 1 | 1 | 1 | 1 | 1 | 1 | 1  | 10    | 10            | 10             | 10            | 10           | 10          | 10            | 10           | 10           | 10            | 10                 | 10 |
| 35  | 1        | 1 | 1 | 1 | 1 | 1 | 1 | 1 | 1 | 1  | 10    | 10            | 10             | 10            | 10           | 10          | 10            | 10           | 10           | 10            | 10                 | 10 |
| 36  | 1        | 1 | 1 | 1 | 1 | 1 | 1 | 1 | 1 | 1  | 10    | 10            | 10             | 10            | 10           | 10          | 10            | 10           | 10           | 10            | 10                 | 10 |
| 37  | 1        | 1 | 1 | 1 | 1 | 1 | 1 | 1 | 1 | 1  | 10    | 10            | 10             | 10            | 10           | 10          | 10            | 10           | 10           | 10            | 10                 | 10 |
| 38  | 1        | 1 | 1 | 1 | 1 | 1 | 1 | 1 | 1 | 1  | 10    | 10            | 10             | 10            | 10           | 10          | 10            | 10           | 10           | 10            | 10                 | 10 |
| 39  | 1        | 1 | 1 | 1 | 1 | 1 | 1 | 1 | 1 | 1  | 10    | 10            | 10             | 10            | 10           | 10          | 10            | 10           | 10           | 10            | 10                 | 10 |
| 40  | 1        | 1 | 1 | 1 | 1 | 1 | 1 | 1 | 1 | 1  | 10    | 10            | 10             | 10            | 10           | 10          | 10            | 10           | 10           | 10            | 10                 | 10 |
| 41  | 1        | 1 | 1 | 1 | 1 | 1 | 1 | 1 | 1 | 1  | 10    | 10            | 10             | 10            | 10           | 10          | 10            | 10           | 10           | 10            | 10                 | 10 |
| 42  | 1        | 1 | 1 | 1 | 1 | 1 | 1 | 1 | 1 | 1  | 10    | 10            | 10             | 10            | 10           | 10          | 10            | 10           | 10           | 10            | 10                 | 10 |
| 43  | 1        | 1 | 1 | 1 | 1 | 1 | 1 | 1 | 1 | 1  | 10    | 10            | 10             | 10            | 10           | 10          | 10            | 10           | 10           | 10            | 10                 | 10 |
| 44  | 1        | 1 | 1 | 1 | 1 | 1 | 1 | 1 | 1 | 1  | 10    | 10            | 10             | 10            | 10           | 10          | 10            | 10           | 10           | 10            | 10                 | 10 |
| 45  | 1        | 1 | 1 | 1 | 1 | 1 | 1 | 1 | 1 | 1  | 10    | 10            | 10             | 10            | 10           | 10          | 10            | 10           | 10           | 10            | 10                 | 10 |
| 46  | 1        | 1 | 1 | 1 | 1 | 1 | 1 | 1 | 1 | 1  | 10    | 10            | 10             | 10            | 10           | 10          | 10            | 10           | 10           | 10            | 10                 | 10 |
| 47  | 1        | 1 | 1 | 1 | 1 | 1 | 1 | 1 | 1 | 1  | 10    | 10            | 10             | 10            | 10           | 10          | 10            | 10           | 10           | 10            | 10                 | 10 |
| 48  | 1        | 1 | 1 | 1 | 1 | 1 | 1 | 1 | 1 | 1  | 10    | 10            | 10             | 10            | 10           | 10          | 10            | 10           | 10           | 10            | 10                 | 10 |
| 49  | 1        | 1 | 1 | 1 | 1 | 1 | 1 | 1 | 1 | 1  | 10    | 10            | 10             | 10            | 10           | 10          | 10            | 10           | 10           | 10            | 10                 | 10 |
| 50  | 1        | 1 | 1 | 1 | 1 | 1 | 1 | 1 | 1 | 1  | 10    | 10            | 10             | 10            | 10           | 10          | 10            | 10           | 10           | 10            | 10                 | 10 |

... ..



UNITED STATES GOVERNMENT

272

*Memorandum*

TO :

DATE: March 25, 1960

FROM :

SUBJECT: SECURITY INDEX

*During the past week, 17 cards were added to the Security Index and 34 cards were cancelled, a net decrease of 17 cards.*

*The Security Index count as of today is*  
12,433.

ACTION:

*None. For your information.*



UNITED STATES GOVERNMENT

## Memorandum

2787

TO :

DATE: 3-21-60

FROM :

SUBJECT: SUGGESTION #300-60  
 SUBMITTED BY SA  
 KNOXVILLE DIVISION

SUGGESTION: That a form on distinctive colored paper be printed and filed on top of the last serial of security files on individuals. The proposed form would contain a characterization of the subject of that particular security file suitable for inclusion in reports prepared on individuals other than the subject of that particular file. It would be prepared by the Agent to whom the Security Index case is assigned at the time the case is reopened for the annual or semiannual report.

ADVANTAGES: SA [redacted] indicated it would save Agent and/or correlation personnel time spent in reviewing files for characterization of individuals.

CURRENT PRACTICE: The current practice is to review the file until a suitable characterization is located.

OBSERVATIONS: This suggestion was reviewed by [redacted], Domestic Intelligence Division and [redacted] Investigative Division and they recommend against adoption for the following reasons: (1) Preparation of the material would take considerable clerical and stenographic time and it is felt that such would outweigh the benefits derived therefrom. (2) When looking for a characterization of a particular individual, the case files would have to be reviewed in any event to determine if the data set forth on the form proposed by the suggestor is up to date, as additional material may have been channelized to the files, and (3) Thousands of these characterizations would be prepared on routine subjects which would either never be used or used very infrequently.

This division agrees that it would not be desirable to adopt this proposal.

RECOMMENDATION: That this suggestion not be adopted. Upon approval, no further action necessary since this idea has previously been acknowledged.

1 - Personnel file of SA

(sent direct)

UNITED STATES GOVERNMENT

*Memorandum*

TO :

DATE: April 1, 1960

FROM :

SUBJECT: *Security Index*  
SECURITY INDEX

*During the past week, 13 cards were added to the Security Index and 31 cards were cancelled, a net decrease of 18 cards.*

*The Security Index count as of today is 12,415.*

ACB

*None. For your information.*

UNITED STATES GOVERNMENT

## Memorandum

TO :

DATE: April 8, 1960

FROM :

SUBJECT:

SECURITY INDEX

The following is a report on the status of the Security Index since the last count was furnished to you on March 11, 1960:

| <u>Week of:</u>    | <u>New Cards<br/>Added</u> | <u>Cards<br/>Cancelled</u> | <u>Net<br/>Change</u> |
|--------------------|----------------------------|----------------------------|-----------------------|
| March 14-18        | 11                         | 32                         | -21                   |
| March 21-25        | 17                         | 34                         | -17                   |
| March 28 - April 1 | 13                         | 31                         | -18                   |
| April 4-8          | <u>26</u>                  | <u>33</u>                  | <u>-7</u>             |
| Total              | 67                         | 130                        | -63                   |

During the above-mentioned period, there was a net decrease in the Security Index of 63.

For your information, during the preceding four-week period, 59 cards were added to the Security Index and 92 cards were cancelled, resulting in a net decrease of 33.

The Security Index count as of today is

12,406.

ACTION:

This is for your information.



## Memorandum

TO :

DATE: April 12, 1960

FROM :

SUBJECT: DELINQUENCY IN SECURITY MATTERS

SUMMARY:

Each month you follow the field closely on the status of security work by analyzing the backlog of pending cases and delinquency in espionage, internal security, subversion and foreign intelligence cases in classifications 25, 150 and 103. Trends of these cases as of March 31, 1960, is set forth below.

In March, there was an increase in pending active matters in the entire field in the security classifications from 15,341 to 16,107. Delinquent matters decreased from 1,511 to 1,400. The percentage of delinquent matters decreased from 9.8% to 7.2%.

Letters are being sent to the offices indicated by asterisks on page four herein, commenting on their delinquency and pointing out the necessity of bringing their security work up to date.

RECOMMENDATION:

The field will continue to be followed closely regarding security delinquency and you will be advised of the results of the review of the April, 1960, administrative reports.

Memorandum for  
RE: DELINQUENCY IN SECURITY INVESTIGATIONS

DETAILS:

The March, 1960, administrative review from all offices reflect that the total pending active matters in classifications 65, 100 and 105 increased from 15,854 to 18,107. Delinquent items decreased from 1,511 to 1,160. The percentage of delinquent items decreased from 9.5% to 7.3%.

The following statistics reflect the status of pending work, including both pending active and pending inactive matters, and delinquency for all field divisions for the last four months.

TOTAL PENDING MATTERS  
CLASSIFICATIONS 65, 100 AND 105  
ALL FIELD DIVISIONS

| <u>Classification</u> | <u>12/31/59</u> | <u>1/31/60</u> | <u>2/29/60</u> | <u>3/31/60</u> |
|-----------------------|-----------------|----------------|----------------|----------------|
| 65                    | 527             | 634            | 577            | 557            |
| 100                   | 10,949          | 10,337         | 10,302         | 10,420         |
| 105                   | <u>6,632</u>    | <u>6,747</u>   | <u>7,009</u>   | <u>7,252</u>   |
| Total                 | 18,108          | 17,718         | 17,888         | 18,229         |

TOTAL DELINQUENT MATTERS  
CLASSIFICATIONS 65, 100 AND 105  
ALL FIELD DIVISIONS

| <u>Classification</u> | <u>12/31/59</u> | <u>1/31/60</u> | <u>2/29/60</u> | <u>3/31/60</u> |
|-----------------------|-----------------|----------------|----------------|----------------|
| 65                    | 31              | 24             | 21             | 35             |
| 100                   | 897             | 1032           | 835            | 672            |
| 105                   | <u>583</u>      | <u>602</u>     | <u>655</u>     | <u>453</u>     |
| Total                 | 1,475           | 1,708          | 1,511          | 1,160          |

Memorandum for  
RE: DELINQUENCY IN SECURITY INVESTIGATIONS

The following statistics reflect the total of pending active matters, delinquency, and percentage of delinquency of all offices during the past six months.

CLASSIFICATIONS 65, 100 AND 105  
AND PENDING MATTERS

| <u>Date</u> | <u>Pending Active Matters</u> | <u>Delinquent Matters</u> | <u>Percentage Delinquent</u> |
|-------------|-------------------------------|---------------------------|------------------------------|
| 10/31/59    | 15,432                        | 1,562                     | 10.1%                        |
| 11/30/59    | 15,894                        | 1,556                     | 9.8%                         |
| 12/31/59    | 15,896                        | 1,475                     | 9.2%                         |
| 1/31/60     | 15,540                        | 1,792                     | 11.6%                        |
| 2/29/60     | 15,254                        | 1,511                     | 9.5%                         |
| 3/31/60     | 16,107                        | 1,160                     | 7.2%                         |

Status of Security Work by Individual Office

Each office is listed according to the percentage of delinquency on March 31, 1960, in total matters in classifications 65, 100 and 105. These statistics reflect the progress during March, 1960.



Memorandum for  
RE: DELINQUENCY IN SECURITY INVESTIGATIONS

| Office        | Active Matters |         | Percentage Delinquency |        |
|---------------|----------------|---------|------------------------|--------|
|               | 2/15/50        | 2/21/50 | 2/29/50                | 3/7/50 |
| Savannah      | 22             | 31      | 0.0%                   | 3.0%   |
| Miami         | 383            | 388     | 24.8%                  | 22.3%  |
| Atlanta       | 97             | 83      | 4.1%                   | 14.5%  |
| Memphis       | 13             | 21      | 0.0%                   | 14.3%  |
| Buffalo       | 232            | 248     | 11.7%                  | 12.0%  |
| Phoenix       | 48             | 44      | 27.1%                  | 11.4%  |
| Detroit       | 555            | 662     | 22.5%                  | 11.1%  |
| Charlotte     | 52             | 57      | 13.5%                  | 10.3%  |
| Cleveland     | 477            | 428     | 10.9%                  | 10.1%  |
| Jacksonville  | 45             | 49      | 4.4%                   | 10.2%  |
| New York      | 3280           | 3788    | 10.4%                  | 10.0%  |
| Chicago       | 1021           | 1028    | 15.9%                  | 8.6%   |
| St. Louis     | 112            | 139     | 9.3%                   | 8.6%   |
| Baltimore     | 335            | 383     | 10.2%                  | 8.4%   |
| Norfolk       | 22             | 25      | 4.5%                   | 8.0%   |
| Indianapolis  | 164            | 174     | 6.5%                   | 7.5%   |
| New Haven     | 251            | 259     | 8.0%                   | 7.5%   |
| San Francisco | 1313           | 1406    | 9.5%                   | 6.6%   |
| Milwaukee     | 112            | 143     | 5.1%                   | 6.3%   |
| Philadelphia  | 515            | 551     | 5.6%                   | 5.0%   |
| Pittsburgh    | 227            | 208     | 6.6%                   | 5.8%   |
| Boston        | 358            | 480     | 7.3%                   | 5.0%   |
| Oklahoma City | 22             | 37      | 27.3%                  | 3.2%   |
| Portland      | 106            | 116     | 1.9%                   | 5.2%   |
| Newark        | 746            | 728     | 11.0%                  | 4.8%   |
| Springfield   | 42             | 42      | 9.5%                   | 4.3%   |
| Seattle       | 351            | 313     | 6.7%                   | 4.4%   |
| Omaha         | 656            | 763     | 5.0%                   | 4.3%   |
| Louisville    | 22             | 25      | 4.5%                   | 4.0%   |
| San Diego     | 110            | 132     | 8.5%                   | 3.7%   |
| Los Angeles   | 1317           | 1499    | 8.5%                   | 3.7%   |
| Denver        | 53             | 65      | 23.5%                  | 3.5%   |
| Albany        | 153            | 148     | 10.0%                  | 3.4%   |

\*Letter being sent re delinquent status.



Memorandum for  
 RE: DELINQUENCY IN SECURITY INVESTIGATIONS

| Office           | Active Matters |         | Percentage Delinquency |         |
|------------------|----------------|---------|------------------------|---------|
|                  | 2/22/52        | 2/22/53 | 2/22/52                | 2/22/53 |
| Cincinnati       | 113            | 116     | 0.0%                   | 3.4%    |
| Mobile           | 13             | 30      | 0.0%                   | 3.3%    |
| Birmingham       | 34             | 34      | 2.9%                   | 2.9%    |
| Minneapolis      | 235            | 266     | 2.4%                   | 2.4%    |
| Salt Lake City   | 54             | 44      | 1.9%                   | 2.3%    |
| Kansas City      | 116            | 105     | 6.0%                   | 1.0%    |
| San Juan         | 252            | 220     | 0.0%                   | .3%     |
| Washington Field | 1233           | 1172    | 1.9%                   | .3%     |
| Albuquerque      | 40             | 35      | 0.0%                   | 0.0%    |
| Anchorage        | 11             | 11      | 0.0%                   | 0.0%    |
| Butte            | 31             | 30      | 0.0%                   | 0.0%    |
| Dallas           | 48             | 53      | 0.0%                   | 0.0%    |
| El Paso          | 31             | 19      | 0.0%                   | 0.0%    |
| Honolulu         | 25             | 19      | 4.0%                   | 0.0%    |
| Houston          | 27             | 45      | 7.4%                   | 0.0%    |
| Knoxville        | 10             | 12      | 0.0%                   | 0.0%    |
| Little Rock      | 11             | 13      | 9.1%                   | 0.0%    |
| New Orleans      | 65             | 66      | 7.7%                   | 0.0%    |
| Richmond         | 27             | 40      | 0.0%                   | 0.0%    |
| San Antonio      | 18             | 24      | 0.0%                   | 0.0%    |

UNITED STATES GOVERNMENT

2731

*Memorandum*

TO :

DATE: April 16, 1960

FROM :

SUBJECT: *0*  
SECURITY INDEX

*During the past week, 11 cards were added to the Security Index and 29 cards were cancelled; a net decrease of 18 cards.*

*The Security Index count as of today is 12,330.*

ACTION:

*None. For your information.*

## Memorandum

TO :

DATE: April 22, 1960

FROM :

SUBJECT: *Security Index*

During the past week, 3 cards were added to the Security Index and 15 cards were cancelled, a net decrease of 12 cards.

The Security Index count as of today is 12,376.

ACTION:

None. For your information.



## Office Memorandum • UNITED STATES GOVERNMENT

TO :

DATE: 4/22/60

FROM :

SUBJECT: SECURITY INDEX CARD STATISTICS

There are 12,370 persons represented in the Security Index (as of April 15, 1960). Of the total, 10,597 or 85.6 per cent are communists.

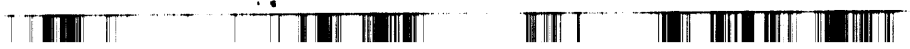
A detailed table, enclosed in duplicate, shows as of April 15, 1960, the distribution of the subjects by field office, nationalistic tendencies, dangerousness, sex, race, citizenship, and "special lists." A key to abbreviations is enclosed.

Enclosures

KEY TO ABBREVIATIONS USED IN SECURITY INDEX

- AL Alien
- DC Detcom
- KF Key Figure
- NA Naturalized
  
- NB Native Born
- TF Top Functionary
- UN Unknown
- AFP Atomic Energy Program Employees
  
- COM Communist Party, USA
- ESP Espionage Subjects
- FGE Foreign Government Employees
  
- GOV United States Government Employees
- ISL Independent Socialist League
- JFG Johnson Forest Group
  
- NOI Nation of Islam
- MIS Miscellaneous
- NPR Nationalistic Party of Puerto Rico
- PPA Proletarian Party of America
  
- RUS Russian
- ASC American Socialist Clubs
- SWP Socialist Workers' Party
- UNE United Nations Employees
  
- UPR Union of the People for the Establishment  
of the Republic of Puerto Rico
- YUG Yugoslavain

CONFIDENTIAL



KEY IC ABBREVIATIONS USED IN SECURITY INDEX

AL Alien  
DS Detcom  
KF Key Figure  
NA Naturalized  
  
NB Native Born  
TF Top Functionary  
UN Unknown  
AEP Atomic Energy Program Employees  
  
COM Communist Party, USA  
ESP Espionage Subjects  
FGE Foreign Government Employees  
  
GOV United States Government Employees  
ISL Independent Socialist League  
JFG Johnson Forest Group  
  
NOI Nation of Islam  
MIS Miscellaneous  
NPR Nationalistic Party of Puerto Rico  
PPA Proletarian Party of America  
  
RUS Russian  
ASC American Socialist Clubs  
SWP Socialist Workers' Party  
UNE United Nations Employees  
  
UPR Union of the People for the Establishment  
of the Republic of Puerto Rico  
YUG Yugoslavain









UNITED STATES GOVERNMENT

## Memorandum

TO : Mr. ██████████

DATE: 4-25-60

FROM : Mr. ██████████

SUBJECT: SECURITY INDEX LISTS

Enclosed herewith is one copy each of the following lists for transmittal to the SAC, Quantico, for storage with other vital records maintained by him:

- 1) Alphabetical list of Security Index (SI) subjects.
- 2) Geographical list of SI subjects.
- 3) Special Section of the SI.
- 4) List of key figures and top functionaries.
- 5) List of SI subjects out of the country.
- 6) List of missing SI subjects.
- 7) List of subjects whose citizenship status is unknown.
- 8) List of aliens.
- 9) List of SI subjects of Chinese descent.
- 10) List of SI subjects sympathetic to communist China.

The SAC should destroy by burning the lists furnished in March, 1960. When this action has been taken, he should so note on this memorandum and return it to the Subversive Control Section.

ACTION:

If you approve, this memorandum and the attached lists will be forwarded to Quantico for the above action.

Enclosures  
100-358086

1 - SAC, Quantico  
1 - Mr. ██████████

JJM:ham  
(3)

REC-33

18 APR 27 1960

K 101

Handled at Quantico

4-26-60 JMS

S

APR 26 1960

UNITED STATES GOVERNMENT

2735

*Memorandum*

TO :

DATE: April 25, 1960

FROM :

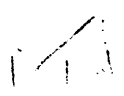
SUBJECT: SECURITY INDEX

We forward to the field quarterly an alphabetical list of each office's Security Index in order that the Security Index cards maintained in the field may be checked and reconciled with Bureau records.

There is attached a proposed letter to all field offices containing appropriate instructions regarding the handling of the list.

RECOMMENDATION:

It is recommended that the attached plastipate of letter to all field offices be approved and forwarded.

Enclosure 



UNITED STATES GOVERNMENT

# Memorandum

TO :

DATE: April 20, 1953

FROM :

SUBJECT: SECURITY INDEX

*During the past week, 5 cards were added to the Security Index and 48 cards were cancelled, a net decrease of 43 cards.*

*The Security Index currently stands at 12,303.*

**ACTION:**

*None. For your information.*



~~SECRET~~ LIST

3/736

Assistant Attorney General

April 26, 1960

Director, FBI

Director, [unclear]

There is attached hereto a current list of individuals included in the main portion of the Security Index. Names included in the main portion of the Index are also included in the Security Index. Individuals coming within your jurisdiction are listed on separate pages. Additional information is available from the Bureau field office covering the residence of the individual.

It is requested that this list be given utmost security.

Enclosure

100-300000

NOTE: Classified as pertains to Security Index, part of "Top Secret" Emergency Detention Program of Department. Espionage Section of Social Section not included. Four designated groups are:

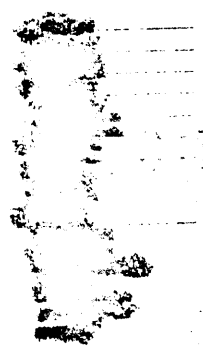
- U. S. Government Employees
- Foreign Government Employees
- United Nations Employees
- Pro-Communist Activities

100-300000

REC-10

TDR:flm  
(5)

MAY 10 1960



*Memorandum*

TO :

DATE: May 6, 1960

FROM :

SUBJECT: SECURITY INDEX

*During the past week, 10 cards were added to the Security Index and 14 cards were cancelled, a net decrease of 4 cards.*

*The Security Index count as of today is 12,349.*

ACTION:

*None. For your information.*



62-14557

-60

|                   |  |                                |               |
|-------------------|--|--------------------------------|---------------|
| To: Director, FBI |  | From: (Suggester's name)       | Date: 4-21-60 |
|                   |  | Division of Assignment: NEWARK |               |

SUGGESTION I suggest that, in security type cases, after the serials that are copies of memos, the original of which are maintained in other files, have been reviewed and reported be destroyed.

Many intra-office memos have 20 to 30 copies disseminated into other files. After the memos have been reviewed and reported where pertinent, they have served the main purpose they were prepared for and since we will continue to maintain the original memo there is a lot of duplication of identical information being maintained in many different files. Another factor to be considered is the fact that under this system of dissemination some memos are five or six pages long whereas the information concerning the individual whose file it was designated for is only contained on one of these pages.

Current practice or rule (Include manual citation as well as facts)

These memos are filed as serials and maintained until such time as they would be destroyed under existing rules for destruction of files. (see attachment)

Advantages of suggestion and annual savings (Include basis for estimate)

It would save a great deal of filing space at an inestimable annual savings.

Disadvantages of suggestion

None known.

REC-111

The use by the United States of my suggestion shall not form the basis of a further claim of any nature by me, my heirs, or assigns upon the United States)

Mr.  Mrs.  Miss

Signature and Title of Suggester

Recommendations and comments of Division Head  
*I see this suggestion has merit for the reasons set forth above. Actually the Memorandum should be given it. Recommend favorable consideration.*

1

Current practice or rule  
(Include manual citation as well as facts)

(Continued)

Reference is made to Manual of Rules and Regulations, Part II, Section 3, pages 11b and 11c. "6. Destruction of copies of serials. c. Extra copies of correspondence prepared or received for covering leads or for other reasons. (3) Copies of letters, airtels, and memoranda may be destroyed when they have served the purpose for which prepared. Of course, the document constituting the serial must be retained."

This has been interpreted to refer to extra copies of serials prepared for and maintained in one case file, whereas the suggestion I am making concerns copies of memos prepared for and being maintained in other case files. This system of dissemination of memos has replaced the old system of merely indexing all names contained in the original memo.



# Memorandum

TO :

DATE: May 9, 1960

FROM :

SUBJECT: DELINQUENCY IN SECURITY INVESTIGATIONS

## SUMMARY:

Each month, we follow the field closely on the status of security work by analyzing the backlog of pending cases and delinquency in espionage, internal security, security matter and foreign intelligence cases in classifications 65, 100 and 105. Status of these cases as of April 30, 1960, is set forth below.

In April, there was a decrease in pending active matters in the entire field in the security classifications from 16,107 to 15,646. Delinquent matters increased from 1,160 to 1,445. The percentage of delinquent matters increased from 7.2% to 9.2%.

Letters are being sent to the offices indicated by asterisks on page four herein, commenting on their delinquency and pointing out the necessity of bringing their security cases to a current status.

## RECOMMENDATION:

The field will continue to be followed closely regarding security delinquency and you will be advised of the results of the review of the May, 1960, administrative reports.

Security, Internal Security



Memorandum for  
 RE: DELINQUENCY IN SECURITY INVESTIGATIONS

DETAILS:

The April, 1960, administrative reports from all offices reflect that the total pending active matters in classifications 65, 100 and 105 decreased from 18,107 to 15,646. Delinquent items increased from 1,160 to 1,445. The percentage of delinquent items increased from 7.23 to 9.84.

The following statistics reflect the status of pending work, including both pending active and pending inactive matters, and delinquency for all field divisions for the last four months.

TOTAL PENDING MATTERS  
CLASSIFICATIONS 65, 100 AND 105  
ALL FIELD DIVISIONS

| <u>Classification</u> | <u>1/31/60</u> | <u>2/29/60</u> | <u>3/31/60</u> | <u>4/30/60</u> |
|-----------------------|----------------|----------------|----------------|----------------|
| 65                    | 634            | 577            | 557            | 510            |
| 100                   | 10,337         | 10,344         | 10,480         | 10,127         |
| 105                   | <u>6,747</u>   | <u>7,002</u>   | <u>7,239</u>   | <u>7,276</u>   |
| Total                 | 17,718         | 17,929         | 18,296         | 17,913         |

TOTAL DELINQUENT MATTERS  
CLASSIFICATIONS 65, 100 AND 105  
ALL FIELD DIVISIONS

| <u>Classification</u> | <u>1/31/60</u> | <u>2/29/60</u> | <u>3/31/60</u> | <u>4/30/60</u> |
|-----------------------|----------------|----------------|----------------|----------------|
| 65                    | 24             | 21             | 35             | 21             |
| 100                   | 1082           | 855            | 672            | 866            |
| 105                   | <u>632</u>     | <u>635</u>     | <u>453</u>     | <u>558</u>     |
| Total                 | 1,798          | 1,511          | 1,160          | 1,445          |

Memorandum for  
RE: DELINQUENCY IN CRIMINAL INVESTIGATIONS

The following statistics reflect the total of pending active matters, delinquency and percentage of delinquency of all offices during the past six months.

CLASSIFICATIONS 65, 100 AND 105  
ALL FIELD DIVISIONS

| <u>Date</u> | <u>Pending Active Matters</u> | <u>Delinquent Matters</u> | <u>Percentage Delinquent</u> |
|-------------|-------------------------------|---------------------------|------------------------------|
| 11/30/59    | 15,894                        | 1,556                     | 9.8%                         |
| 12/31/59    | 15,896                        | 1,475                     | 9.2%                         |
| 1/31/60     | 15,540                        | 1,798                     | 11.6%                        |
| 2/29/60     | 15,854                        | 1,511                     | 9.5%                         |
| 3/31/60     | 16,107                        | 1,160                     | 7.2%                         |
| 4/30/60     | 15,646                        | 1,445                     | 9.2%                         |

State of Delinquency by Individual Office

Each office is listed according to the percentage of delinquency on April 30, 1960, in total matters in classifications 65, 100 and 105. These statistics reflect the progress during April, 1960.

Memorandum for  
RE: DELINQUENCY IN SECURITY INVESTIGATIONS

| Office        | Active Matters |            | Percentage Delinquent |         |
|---------------|----------------|------------|-----------------------|---------|
|               | 3/31/60        | 4/30/60    | 3/31/60               | 4/30/60 |
| *Miami        | 303            | 376        | 22.5%                 | 27.2%   |
| *New Orleans  | 66             | 54         | 0.0%                  | 18.5%   |
| *San Diego    | 132            | 139        | 3.8%                  | 16.3%   |
| *Atlanta      | 83             | 92 + 9     | 14.5%                 | 15.7%   |
| Oklahoma City | 37             | 35         | 5.4%                  | 14.3%   |
| Memphis       | 21             | 21         | 14.2%                 | 14.3%   |
| Cleveland     | 428            | 421        | 10.5%                 | 13.8%   |
| New York      | 3788           | 3532 - 256 | 10.0%                 | 13.0%   |
| Buffalo       | 248            | 285 + 37   | 12.9%                 | 11.9%   |
| Minneapolis   | 266            | 245        | 2.4%                  | 10.6%   |
| Milwaukee     | 143            | 128        | 6.3%                  | 10.2%   |
| Pittsburgh    | 203            | 206        | 5.5%                  | 10.3%   |
| San Francisco | 1406           | 1427 + 21  | 6.6%                  | 10.1%   |
| Chicago       | 1023           | 980        | 8.6%                  | 9.9%    |
| New Haven     | 259            | 287 + 28   | 7.3%                  | 9.4%    |
| Norfolk       | 25             | 32 + 7     | 8.0%                  | 9.4%    |
| St. Louis     | 139            | 130        | 8.6%                  | 9.2%    |
| Detroit       | 668            | 652        | 11.1%                 | 9.2%    |
| Kansas City   | 105            | 55         | 1.0%                  | 9.1%    |
| Newark        | 728            | 662        | 4.8%                  | 9.0%    |
| Portland      | 116            | 80         | 5.2%                  | 8.8%    |
| Indianapolis  | 174            | 157        | 7.5%                  | 8.3%    |
| Cincinnati    | 116            | 114        | 3.4%                  | 7.9%    |
| Denver        | 85             | 77         | 3.5%                  | 7.8%    |
| Baltimore     | 383            | 373        | 8.4%                  | 7.8%    |
| Louisville    | 25             | 26 + 1     | 4.0%                  | 7.7%    |
| Boston        | 490            | 400        | 5.6%                  | 7.5%    |
| Charlotte     | 57             | 42         | 10.5%                 | 7.1%    |
| Anchorage     | 11             | 14 + 3     | 0.0%                  | 7.1%    |
| Philadelphia  | 581            | 534        | 6.0%                  | 6.7%    |
| Houston       | 45             | 31         | 0.0%                  | 6.5%    |
| Albany        | 143            | 142        | 3.4%                  | 6.3%    |
| Los Angeles   | 1499           | 1495       | 3.7%                  | 5.9%    |
| Mobile        | 30             | 18         | 3.3%                  | 5.6%    |
| Seattle       | 318            | 382 + 64   | 4.4%                  | 5.2%    |
| Omaha         | 46             | 39         | 4.3%                  | 5.1%    |

\*Letter being sent re delinquent status.

Memorandum for  
 RE: EFFICIENCY OF CRIMINAL INVESTIGATIONS

| Office           | Active Matters |         | Percentage Delinquent |         |
|------------------|----------------|---------|-----------------------|---------|
|                  | 3/31/60        | 4/30/62 | 3/31/60               | 4/30/62 |
| Salt Lake City   | 44             | 40      | 2.3%                  | 5.0%    |
| El Paso          | 18             | 20      | 0.0%                  | 5.0%    |
| Phoenix          | 21             | 50      | 11.4%                 | 4.0%    |
| Birmingham       | 34             | 51      | 2.9%                  | 3.0%    |
| Dallas           | 53             | 57      | 0.0%                  | 3.5%    |
| Richmond         | 20             | 45      | 0.0%                  | 2.2%    |
| San Juan         | 220            | 201     | .9%                   | .5%     |
| Washington Field | 1172           | 1222    | .3%                   | .2%     |
| Albuquerque      | 35             | 34      | 0.0%                  | 0.0%    |
| Butte            | 30             | 46      | 0.0%                  | 0.0%    |
| Honolulu         | 19             | 11      | 0.0%                  | 0.0%    |
| Jacksonville     | 49             | 50      | 10.2%                 | 0.0%    |
| Knoxville        | 12             | 16      | 0.0%                  | 0.0%    |
| Little Rock      | 13             | 14      | 0.0%                  | 0.0%    |
| San Antonio      | 24             | 24      | 0.0%                  | 0.0%    |
| Savannah         | 31             | 32      | 3.0%                  | 0.0%    |
| Springfield      | 42             | 60      | 4.8%                  | 0.0%    |

UNITED STATES GOVERNMENT

# Memorandum

DATE: May 18, 1950

TO :

FROM :

SUBJECT: SECURITY INDEX

The following is a report on the status of the Security Index since the last count was furnished to you on April 6, 1950:

| Week of:    | New Cards<br>Added | Cards<br>Cancelled | Net<br>Change |
|-------------|--------------------|--------------------|---------------|
| April 11-15 | 11                 | 29                 | -18           |
| April 18-22 | 9                  | 23                 | -14           |
| April 25-29 | 5                  | 22                 | -17           |
| May 2-6     | 10                 | 14                 | -4            |
| May 9-13    | 17                 | 87                 | -70           |
| Total       | 52                 | 121                | -69           |

During the above-mentioned period, there was a net decrease in the Security Index of 69.

For your information, during the preceding four-week period, 67 cards were added to the Security Index and 136 cards were cancelled, resulting in a net decrease of 69.

The Security Index count as of today is 12,314.

ACTION:

This is for your information.



UNITED STATES GOVERNMENT

*Memorandum*

2747

TO :

DATE: May 20, 1960

FROM :

SUBJECT: SECURITY INDEX

*During the past week, 12 cards were added to the Security Index and 26 cards were cancelled, a net decrease of 14 cards.*

*The Security Index count as of today is 12,303.*

ACB:W

*None. For your information.*



Assistant Attorney General

1 - Mr. [redacted]  
1 - Mr. [redacted]

May 20, 1950

Director, FBI

Enclosed is a list of the names of the individuals included in the Security Index. Names included in the first portion of the list are arranged alphabetically. Names in the second portion are arranged in order of their present or former offices. Following each name is information indicating sex, race, age, birth date, Bureau file number, and the name of the office covering the residence of the individual.

It is requested that this list be given utmost security.

Enclosure

100-308330

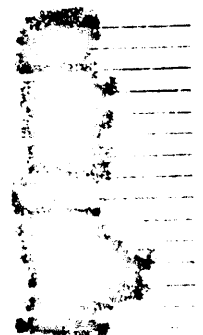
NOTE: Classified as pertains to Security Index, part of "Key Secret" program, Information Program of Department, Espionage Section of Special Section not included. Four designated groups are:

- U. S. Government Employees
- Foreign Government Employees
- United Nations Employees
- Pro-Tier Nationals

46  
 100-308330  
 15 MAY 24 1950

FDR:baw  
(5)

REC-5  
MAY 100



MAIL ROOM  TELETYPE UNIT

U.S. GOVERNMENT PRINTING OFFICE





Memorandum

DATE: May 20, 1960

TO : Mr. [redacted]

FROM : Mr. [redacted]

SUBJECT: [redacted]

Enclosed herewith is one copy each of the lists furnished for transmittal to the SAC, Quantico, for storage with other vital records maintained by [redacted]

- 1) Alphabetical list of Security Index (SI) subjects.
- 2) Geographical list of SI subjects.
- 3) Special Section of the SI.
- 4) List of key figures and key personalities.
- 5) List of SI subjects out of the country.
- 6) List of missing SI subjects.
- 7) List of subjects whose citizenship status is unknown.
- 8) List of aliens.
- 9) List of SI subjects of Chinese descent.
- 10) List of SI subjects sympathetic to communist China.

The SAC should destroy or burning the lists furnished in April, 1960. If the SAC has been advised, he should so note on this memorandum and return it to the Subversive Control Section.

ACTION:

If you approve, this memorandum and the attached lists will be forwarded to Quantico for the above action.

Enclosures  
100-388066

- 1 - SAC, Quantico
- 1 - Mr. [redacted]

TDR:ham  
(3)

100-5

MAY 25 1960

MAY 24 1960



Memorandum

TO :

DATE: July 27, 1960

FROM :

SUBJECT: SECURITY INDEX

During the past week, 14 cards were added to the Security Index and 21 cards were cancelled, a net decrease of 7 cards.

The Security Index count as of today is 12,312.

ACTION:

None. For your information.

UNITED STATES GOVERNMENT

*Memorandum*

TO :

DATE: 5/20/50

FROM :

SUBJECT: SECURITY INDEX CASE STATISTICS

There are 10,000 persons represented in the Security Index (as of May 18, 1950). Of the total, 10,000 are in the Security Index.

The following table, enclosed in duplicate, shows as of May 18, 1950, the classification of the subjects by field office, nationality, tendency, dissemination, sex, race, citizenship, and "special lists." A key to abbreviations is enclosed.

Enclosures





748  
876  
ENCL 2

SECURITY INDEX CARD STATISTICS - BY FIELD OFFICE  
BASED ON WORKING STATISTICAL SECTION RECORDS AS OF MAY 13, 1960

| (1)<br>FIELD OFFICE | (2)<br>TOTAL | (3)<br>NATIONALISTIC TENDENCY OR ORGANIZATION AFFILIATION |     |     |     |     |     |     |     |     |     |     |     | (4)<br>SEX |     |      | (5)<br>CITIZENSHIP STATUS |       |       |       | (7)<br>RACE |       |        |       | (8)<br>SPECIAL STATUS |    |    |    |    |    |   |   |   |   |
|---------------------|--------------|---|-----|-----|-----|-----|-----|-----|-----|-----|-----|-----|-----|------------|-----|------|---------------------------|-------|-------|-------|-------------|-------|--------|-------|-----------------------|----|----|----|----|----|---|---|---|---|
|                     |              | CON   | ISL | JPD | MOI | NIS | OPR | PPA | RUS | ASC | SWP | UPR | YUD | DC         | EP  | TF   | NO                        | NA    | AL    | US    | WHITE       | BLACK | CHIN   | OTHER | AP                    | CP | CC | TT | WT | TD |   |   |   |   |
|                     |              | 10,009  | 179 | 66  | 124 | 94  | 276 | 34  | 21  | 89  | 602 | 4   | 1   | 2,555      | 626 | 32   | 7,283                     | 5,056 | 9,952 | 2,177 | 104         | 26    | 10,705 | 1,496 | 10                    | 58 | 0  | 13 | 16 | 77 | 7 | 1 |   |   |
| ALBANY              | 110          |   |     | 1   | 1   |     |     |     |     |     |     |     | 32  | 1          |     | 41   | 69                        | 92    | 16    | 2     |             |       | 104    | 6     |                       |    |    |    |    |    |   |   |   |   |
| ALBUQUERQUE         | 14           |   |     |     |     |     |     |     |     |     |     |     | 4   | 1          |     | 0    | 6                         | 13    | 1     | 1     |             |       | 13     | 1     |                       |    |    |    |    |    |   |   |   |   |
| ALBUQUERQUE         | 6            |   |     |     |     |     |     |     |     |     |     |     | 2   |            |     | 4    | 2                         | 6     |       |       |             |       | 6      |       |                       |    |    |    |    |    |   |   |   |   |
| ALBUQUERQUE         | 22           |   |     |     | 12  | 1   | 2   |     |     |     |     |     | 4   |            |     | 10   | 3                         | 22    |       |       |             |       | 7      | 15    |                       |    |    |    |    |    |   |   |   |   |
| ALBUQUERQUE         | 114          |   |     |     | 32  |     |     |     |     |     |     |     | 32  | 7          | 1   | 77   | 99                        | 101   | 15    |       |             |       | 79     | 37    |                       |    |    |    |    |    |   |   |   |   |
| ALBUQUERQUE         | 7            |   |     |     | 1   |     |     |     |     |     |     |     |     |            |     | 3    | 4                         | 7     |       |       |             |       | 3      | 4     |                       |    |    |    |    |    |   |   |   |   |
| ALBUQUERQUE         | 266          |   |     | 2   | 15  | 1   |     | 2   |     |     |     |     | 60  | 12         |     | 170  | 94                        | 206   | 56    | 1     | 1           |       | 242    | 22    |                       |    |    |    |    |    |   |   |   |   |
| ALBUQUERQUE         | 174          |   |     |     | 0   | 23  |     |     |     |     |     |     | 74  | 16         |     | 107  | 71                        | 175   | 11    | 2     |             |       | 148    | 30    |                       |    |    |    |    |    |   |   |   |   |
| ALBUQUERQUE         | 62           |   |     |     |     |     |     |     |     |     |     |     | 16  | 5          |     | 10   | 12                        | 40    | 2     |       |             |       | 42     |       |                       |    |    |    |    |    |   |   |   |   |
| ALBUQUERQUE         | 12           |   |     |     | 1   | 1   |     |     |     |     |     |     | 8   | 4          |     | 8    | 4                         | 12    |       |       |             |       | 10     | 2     |                       |    |    |    |    |    |   |   |   |   |
| ALBUQUERQUE         | 834          |   | 21  |     | 40  | 6   | 0   | 0   |     | 16  | 32  |     | 173 | 44         | 5   | 452  | 377                       | 770   | 174   | 18    | 4           |       | 684    | 241   |                       |    |    |    |    |    |   | 2 |   |   |
| ALBUQUERQUE         | 60           |   |     |     | 34  | 1   |     |     |     |     | 2   |     | 26  | 2          |     | 61   | 10                        | 77    | 1     |       |             |       | 33     | 47    |                       |    |    |    |    |    |   | 1 |   |   |
| ALBUQUERQUE         | 241          |   |     |     | 13  | 3   |     | 1   |     | 5   | 22  |     | 60  | 0          | 1   | 152  | 90                        | 202   | 36    | 2     | 1           |       | 189    | 52    |                       |    |    |    |    |    |   |   |   |   |
| ALBUQUERQUE         | 74           |   |     |     | 2   |     |     |     |     |     |     |     | 10  | 1          |     | 14   | 8                         | 23    | 1     | 1     |             | 17    | 7      |       |                       |    |    |    |    |    |   |   |   |   |
| ALBUQUERQUE         | 64           |   |     |     |     |     |     |     |     |     | 2   |     | 25  | 1          |     | 40   | 26                        | 40    | 5     | 1     |             | 63    | 2      |       |                       |    |    |    |    |    |   |   | 1 |   |
| ALBUQUERQUE         | 439          |   | 13  | 20  | 31  |     |     | 0   |     | 22  | 21  |     | 99  | 33         | 3   | 292  | 147                       | 351   | 77    | 11    |             | 340   | 95     | 3     | 1                     |    |    |    |    |    |   | 3 |   |   |
| ALBUQUERQUE         | 5            |   |     |     |     |     |     |     |     |     |     |     | 3   | 1          |     | 3    | 2                         | 4     | 1     |       |             | 5     |        |       |                       |    |    |    |    |    |   |   |   |   |
| ALBUQUERQUE         | 34           |   |     |     |     |     |     |     |     |     |     |     | 13  | 0          |     | 18   | 6                         | 22    | 1     | 2     |             | 11    | 1      | 1     | 11                    |    |    |    |    |    |   |   |   |   |
| ALBUQUERQUE         | 20           |   |     |     | 1   |     |     |     |     |     |     |     | 6   | 1          |     | 15   | 4                         | 18    | 2     | 2     |             | 14    | 6      |       |                       |    |    |    |    |    |   |   |   |   |
| ALBUQUERQUE         | 87           |   |     |     | 2   |     |     | 1   |     |     | 1   |     | 20  | 4          |     | 56   | 31                        | 72    | 15    |       |             | 73    | 14     |       |                       |    |    |    |    |    |   |   |   |   |
| ALBUQUERQUE         | 4            |   |     |     | 2   |     |     |     |     |     |     |     | 1   |            |     | 6    | 2                         | 7     | 1     |       |             | 6     | 2      |       |                       |    |    |    |    |    |   |   |   |   |
| ALBUQUERQUE         | 19           |   |     |     | 4   |     | 2   |     |     |     |     |     | 3   |            |     | 16   | 3                         | 10    |       |       |             | 14    | 5      |       |                       |    |    |    |    |    |   |   |   |   |
| ALBUQUERQUE         | 1            |   |     |     |     |     |     |     |     |     |     |     | 1   |            |     | 1    |                           | 1     |       |       |             | 1     |        |       |                       |    |    |    |    |    |   |   |   |   |
| ALBUQUERQUE         | 2144         |   | 22  | 21  | 35  | 4   |     | 3   | 4   |     | 124 |     | 323 | 104        | 1   | 1136 | 1018                      | 1654  | 658   | 35    | 3           |       | 1990   | 144   |                       | 20 |    |    |    |    |   | 1 |   |   |
| ALBUQUERQUE         | 10           |   |     |     |     |     |     |     |     |     |     |     | 1   |            |     | 6    | 2                         | 10    |       |       |             | 8     | 2      |       |                       |    |    |    |    |    |   |   |   |   |
| ALBUQUERQUE         | 4            |   |     |     | 1   |     |     |     |     |     |     |     | 1   |            |     | 5    | 2                         | 6     |       |       |             | 3     | 2      |       |                       |    |    |    |    |    |   |   |   |   |
| ALBUQUERQUE         | 41           |   |     |     |     |     |     | 4   |     | 1   |     |     | 6   | 1          |     | 26   | 17                        | 27    | 13    | 1     |             | 41    |        |       |                       |    |    |    |    |    |   |   |   |   |
| ALBUQUERQUE         | 120          |   |     |     | 4   |     |     |     |     | 4   | 18  |     | 27  | 1          |     | 86   | 44                        | 113   | 15    | 1     |             | 116   | 13     |       |                       |    |    |    |    |    |   |   |   |   |
| ALBUQUERQUE         | 260          |   |     |     | 3   | 58  |     |     |     |     |     |     | 61  | 10         | 1   | 143  | 97                        | 254   | 23    | 1     | 1           |       | 251    | 9     |                       |    |    |    |    |    |   |   |   |   |
| ALBUQUERQUE         | 432          |   |     |     | 15  |     | 2   |     |     | 2   | 26  |     | 132 | 22         |     | 323  | 209                       | 433   | 91    | 6     | 2           |       | 449    | 83    |                       |    |    |    |    |    |   |   | 1 |   |
| ALBUQUERQUE         | 134          |   |     |     | 4   |     |     | 2   | 2   | 1   | 2   |     | 16  | 10         |     | 76   | 62                        | 114   | 24    |       |             | 123   | 15     |       |                       |    |    |    |    |    |   |   | 1 |   |
| ALBUQUERQUE         | 24           |   |     |     | 2   |     |     |     |     |     |     |     | 7   | 1          |     | 13   | 10                        | 21    |       |       |             | 7     | 16     |       |                       |    |    |    |    |    |   |   |   |   |
| ALBUQUERQUE         | 3321         |   | 57  | 0   | 45  | 41  | 40  |     | 0   | 21  | 131 |     | 640 | 130        | 14  | 1847 | 1454                      | 2467  | 792   | 60    | 7           |       | 2986   | 109   | 20                    | 6  |    |    |    |    |   | 2 |   |   |
| ALBUQUERQUE         | 12           |   |     |     | 4   |     |     |     |     |     |     |     | 6   | 2          |     | 0    | 1                         | 0     | 3     |       |             | 8     | 4      |       |                       |    |    |    |    |    |   |   |   |   |
| ALBUQUERQUE         | 12           |   |     |     |     |     |     |     |     |     |     |     | 7   | 2          |     | 7    | 5                         | 12    |       |       |             | 12    |        |       |                       |    |    |    |    |    |   |   |   |   |
| ALBUQUERQUE         | 21           |   |     |     |     |     |     |     |     |     |     |     | 4   |            |     | 15   | 6                         | 20    | 1     |       |             | 19    | 2      |       |                       |    |    |    |    |    |   |   |   |   |
| ALBUQUERQUE         | 432          |   |     |     | 40  | 2   | 1   |     |     | 33  |     |     | 100 | 10         | 2   | 326  | 206                       | 437   | 93    | 2     |             | 441   | 90     |       | 1                     |    |    |    |    |    |   |   | 6 |   |
| ALBUQUERQUE         | 40           |   |     |     |     |     |     |     |     |     |     |     | 10  |            |     | 26   | 14                        | 29    | 11    |       |             | 39    | 1      |       |                       |    |    |    |    |    |   |   |   |   |
| ALBUQUERQUE         | 84           |   |     |     | 1   | 5   |     | 1   |     |     | 3   |     | 21  | 11         |     | 69   | 27                        | 68    | 14    | 4     |             | 70    | 16     |       |                       |    |    |    |    |    |   |   |   |   |
| ALBUQUERQUE         | 44           |   |     |     |     |     |     |     |     |     | 1   |     | 16  | 4          |     | 53   | 32                        | 77    | 6     | 1     | 1           | 82    | 3      |       |                       |    |    |    |    |    |   |   |   |   |
| ALBUQUERQUE         | 14           |   |     |     | 3   |     |     |     |     |     |     |     | 6   | 2          |     | 10   | 4                         | 12    | 2     |       |             | 11    | 3      |       |                       |    |    |    |    |    |   |   |   |   |
| ALBUQUERQUE         | 73           |   |     |     | 5   |     |     |     |     |     | 6   |     | 27  | 7          |     | 49   | 24                        | 69    | 4     |       |             | 52    | 21     |       |                       |    |    |    |    |    |   |   |   | 1 |
| ALBUQUERQUE         | 24           |   |     |     |     |     |     | 1   |     | 2   |     |     | 10  | 1          |     | 19   | 9                         | 26    | 2     |       |             | 27    | 1      |       |                       |    |    |    |    |    |   |   |   |   |
| ALBUQUERQUE         | 11           |   |     |     |     |     |     |     |     |     |     |     | 6   | 2          |     | 8    | 2                         | 9     | 1     |       |             | 9     | 1      |       |                       |    |    |    |    |    |   |   |   |   |
| ALBUQUERQUE         | 80           |   |     |     |     |     |     |     |     |     |     |     | 16  | 7          |     | 49   | 31                        | 70    | 8     | 1     | 1           | 70    | 0      | 1     | 1                     |    |    |    |    |    |   |   |   |   |
| ALBUQUERQUE         | 1240         |   |     |     | 2   | 7   | 1   | 1   |     | 3   | 0   | 43  | 300 | 74         | 2   | 701  | 559                       | 1041  | 175   | 20    | 4           |       | 1141   | 90    | 13                    | 16 |    |    |    |    |   |   |   |   |
| ALBUQUERQUE         | 244          |   |     |     |     |     | 0   | 108 |     |     |     |     | 61  | 10         |     | 233  | 21                        | 251   | 2     | 1     |             | 226   | 28     |       |                       |    |    |    |    |    |   |   |   |   |
| ALBUQUERQUE         | 1            |   |     |     |     |     |     |     |     |     |     |     |     |            |     | 1    |                           | 1     |       |       |             | 1     |        |       |                       |    |    |    |    |    |   |   |   |   |
| ALBUQUERQUE         | 351          |   |     |     |     | 1   |     |     |     |     | 10  |     | 44  | 14         | 1   | 203  | 148                       | 324   | 18    | 0     |             | 327   | 22     | 1     | 1                     |    |    |    |    |    |   |   | 1 |   |
| ALBUQUERQUE         | 25           |   |     |     |     |     |     |     |     |     |     |     | 14  |            |     | 17   | 8                         | 22    | 3     |       |             | 24    | 1      |       |                       |    |    |    |    |    |   |   |   |   |
| ALBUQUERQUE         | 126          |   |     |     | 16  |     |     |     |     | 1   |     |     | 27  | 8          |     | 70   | 47                        | 100   | 24    | 1     | 1           | 104   | 22     |       |                       |    |    |    |    |    |   |   | 5 |   |

\* Items do not add to total column 2, but are included in sections 3,5,6, and 7. Columns EP and TF are included in DC column.

Memorandum

TO :

DATE: June 3, 1960

FROM :

SUBJECT:

SECURITY INDEX

During the past week, 7 cards were added to the Security Index and 16 cards were cancelled, a net decrease of 9 cards.

The Security Index count as of today is 12,309.

ACTION:

None. For your information.

UNITED STATES GOVERNMENT

*Memorandum*

TO :

DATE: June 9, 1960

FROM :

Security Investigations

SUBJECT: DELINQUENCY IN SECURITY INVESTIGATIONS

SYNOPSIS:

Each month we follow the field closely on the status of security work by analyzing the backlog of pending cases and delinquency in espionage, internal security, security matter and foreign intelligence cases in classifications 65, 100 and 105. Status of these cases as of May 31, 1960, is set forth below.

In May, there was a decrease in pending active matters in the entire field in the security classifications from 15,846 to 15,598. Delinquent matters decreased from 1,445 to 1,308. The percentage of delinquent matters decreased from 9.2% to 8.4%.

Letters are being sent to the offices indicated by asterisks on page four herein, commenting on their delinquency and pointing out the necessity of bringing their security cases to a current status.

RECOMMENDATION:

The field will continue to be followed closely regarding security delinquency and you will be advised of the results of the review of the June, 1960, administrative reports.

Memorandum for  
RE: DELINQUENCY IN SECURITY INVESTIGATIONS

DETAILS:

The May, 1960, administrative reports from all offices reflect that the total pending active matters in classifications 65, 100 and 105 decreased from 15,045 to 15,038. Delinquent items decreased from 1,445 to 1,303. The percentage of delinquent items decreased from 9.2% to 8.4%.

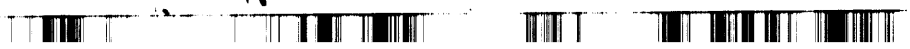
The following statistics reflect the status of pending work, including both pending active and pending inactive matters, and delinquency for all field divisions for the last four months.

TOTAL PENDING MATTERS  
CLASSIFICATIONS 65, 100 AND 105  
ALL FIELD DIVISIONS

| <u>Classification</u> | <u>2/29/60</u> | <u>3/31/60</u> | <u>4/30/60</u> | <u>5/31/60</u> |
|-----------------------|----------------|----------------|----------------|----------------|
| 65                    | 577            | 557            | 510            | 504            |
| 100                   | 10,344         | 10,480         | 10,127         | 10,095         |
| 105                   | <u>7,008</u>   | <u>7,259</u>   | <u>7,276</u>   | <u>7,301</u>   |
| Total                 | 17,929         | 18,296         | 17,913         | 17,900         |

DELINQUENT MATTERS  
CLASSIFICATIONS 65, 100 AND 105  
ALL FIELD DIVISIONS

| <u>Classification</u> | <u>2/29/60</u> | <u>3/31/60</u> | <u>4/30/60</u> | <u>5/31/60</u> |
|-----------------------|----------------|----------------|----------------|----------------|
| 65                    | 21             | 35             | 21             | 15             |
| 100                   | 855            | 672            | 866            | 795            |
| 105                   | <u>635</u>     | <u>453</u>     | <u>558</u>     | <u>498</u>     |
| Total                 | 1,511          | 1,160          | 1,445          | 1,308          |





Memorandum for  
RE: DELINQUENCY IN SECURITY INVESTIGATIONS

The following statistics reflect the total of pending active matters, delinquency and percentage of delinquency of all offices during the past six months.

CLASSIFICATIONS 65, 100 AND 105  
ALL FIELD DIVISIONS

| <u>Date</u> | <u>Pending<br/>Active Matters</u> | <u>Delinquent<br/>Matters</u> | <u>Percentage<br/>Delinquent</u> |
|-------------|-----------------------------------|-------------------------------|----------------------------------|
| 12/31/59    | 15,896                            | 1,475                         | 9.2%                             |
| 1/31/60     | 15,540                            | 1,798                         | 11.6%                            |
| 2/29/60     | 15,854                            | 1,511                         | 9.5%                             |
| 3/31/60     | 16,107                            | 1,180                         | 7.2%                             |
| 4/30/60     | 15,646                            | 1,445                         | 9.2%                             |
| 5/31/60     | 15,599                            | 1,306                         | 8.4%                             |

Status of Security Work by Individual Office

Each office is listed according to the percentage of delinquency on May 31, 1960, in total matters in classifications 65, 100 and 105. These statistics reflect the progress during May, 1960.

Memorandum for  
 RE: DELINQUENCY IN SECURITY INVESTIGATIONS

| Office        | Active Letters |         | Percentage Delinquent |         |
|---------------|----------------|---------|-----------------------|---------|
|               | 4/30/50        | 7/31/50 | 4/30/50               | 7/31/50 |
| *Mobile       | 18             | 18      | 5.6%                  | 16.7%   |
| *Detroit      | 652            | 668     | 9.2%                  | 10.0%   |
| *Milwaukee    | 128            | 127     | 10.2%                 | 15.0%   |
| Denver        | 77             | 75      | 7.3%                  | 14.7%   |
| Atlanta       | 92             | 89      | 15.2%                 | 18.3%   |
| Buffalo       | 255            | 254     | 11.9%                 | 11.0%   |
| Los Angeles   | 1495           | 1559    | 5.9%                  | 10.0%   |
| Miami         | 376            | 266     | 27.1%                 | 10.0%   |
| New York      | 3532           | 3614    | 13.0%                 | 10.0%   |
| San Francisco | 1187           | 1267    | 10.1%                 | 10.0%   |
| Chicago       | 980            | 1022    | 9.3%                  | 9.0%    |
| Norfolk       | 32             | 32      | 9.4%                  | 9.4%    |
| Newark        | 662            | 605     | 9.0%                  | 8.0%    |
| Minneapolis   | 245            | 222     | 10.6%                 | 8.1%    |
| Kansas City   | 55             | 76      | 9.1%                  | 7.9%    |
| Phoenix       | 50             | 54      | 4.0%                  | 7.4%    |
| New Haven     | 287            | 246     | 3.4%                  | 7.3%    |
| St. Louis     | 130            | 137     | 9.2%                  | 7.0%    |
| Baltimore     | 373            | 410     | 7.0%                  | 7.1%    |
| Birmingham    | 51             | 43      | 3.9%                  | 7.0%    |
| Pittsburgh    | 206            | 212     | 10.2%                 | 6.6%    |
| Richmond      | 45             | 30      | 2.2%                  | 6.0%    |
| Philadelphia  | 534            | 562     | 6.7%                  | 6.5%    |
| Boston        | 400            | 414     | 7.5%                  | 6.3%    |
| Charlotte     | 42             | 43      | 7.1%                  | 6.3%    |
| Indianapolis  | 157            | 140     | 6.3%                  | 5.7%    |
| Cleveland     | 457            | 439     | 18.0%                 | 5.0%    |
| San Diego     | 129            | 130     | 16.3%                 | 5.0%    |
| El Paso       | 20             | 21      | 5.0%                  | 5.0%    |
| Memphis       | 21             | 21      | 14.3%                 | 4.8%    |
| Seattle       | 362            | 362     | 5.2%                  | 4.7%    |
| Albany        | 142            | 202     | 6.3%                  | 3.0%    |
| Albuquerque   | 34             | 26      | 0.0%                  | 3.8%    |
| New Orleans   | 54             | 56      | 18.5%                 | 3.6%    |
| Louisville    | 26             | 30      | 7.7%                  | 3.3%    |
| Oklahoma City | 35             | 35      | 14.3%                 | 2.9%    |
| Portland      | 80             | 102     | 2.3%                  | 2.0%    |
| Omaha         | 39             | 71      | 5.1%                  | 2.0%    |

\*Letter being sent re delinquent status.

Memorandum for  
THE ASSISTANT ATTORNEY GENERAL  
DEPARTMENT OF JUSTICE

| Office           | Public Laborers |      | Percentage Delinquents |      |
|------------------|-----------------|------|------------------------|------|
|                  | 1947            | 1948 | 1947                   | 1948 |
| Salt Lake City   | 40              | 40   | 0.0%                   | 0.0% |
| Jacksonville     | 50              | 48   | 1.0%                   | 0.0% |
| Washington Field | 1222            | 1114 | .8%                    | 0.0% |
| Houston          | 31              | 48   | 6.5%                   | 2.1% |
| San Diego        | 201             | 170  | .8%                    | 1.0% |
| Springfield      | 60              | 72   | 0.0%                   | 1.4% |
| Anchorage        | 14              | 16   | 7.1%                   | 0.0% |
| Butte            | 40              | 45   | 0.0%                   | 0.0% |
| Cincinnati       | 114             | 104  | 7.9%                   | 0.0% |
| Dallas           | 57              | 67   | 3.5%                   | 0.0% |
| Honolulu         | 11              | 27   | 0.0%                   | 0.0% |
| Knoxville        | 16              | 17   | 0.0%                   | 0.0% |
| Little Rock      | 14              | 10   | 0.0%                   | 0.0% |
| San Antonio      | 24              | 20   | 0.0%                   | 0.0% |
| Savannah         | 32              | 30   | 0.0%                   | 0.0% |

UNITED STATES GOVERNMENT

## Memorandum

DATE: June 10, 1960

TO :

FROM :

SUBJECT: SECURITY INDEX - C-19

The following is a report on the status of the Security Index since the last count was furnished to you on May 10, 1960:

| <u>Week of:</u> | <u>New Cards</u><br><u>Added</u> | <u>Cards</u><br><u>Cancelled</u> | <u>Net</u><br><u>Change</u> |
|-----------------|----------------------------------|----------------------------------|-----------------------------|
| May 16-20       | 12                               | 26                               | -14                         |
| May 23-27       | 14                               | 21                               | -7                          |
| May 31 - June 3 | 7                                | 16                               | -9                          |
| June 6-10       | <u>15</u>                        | <u>5</u>                         | <u>+10</u>                  |
| Total           | 48                               | 68                               | -20                         |

During the above-mentioned period, there was a net decrease in the Security Index of 20.

For your information, during the preceding five-week period, 53 cards were added to the Security Index and 121 cards were cancelled, resulting in a net decrease of 68.

The Security Index count as of today is 12,519.

ACTION:

None is per your information.

UNITED STATES GOVERNMENT

*Memorandum*

TO :

DATE: June 3, 1960

FROM :

SUBJECT: SECURITY INVESTIGATIONS OF INDIVIDUALS  
COMMUNIST INDEX

Regarding the question of establishing a reserve index composed of those individuals whose activities in subversive organizations do not quite bring them within the Security Index (SI) criteria, the following proposals are offered.

Each field office presently maintains a Communist Index (CI) separate and apart from the SI designed to represent those individuals who should be continually borne in mind from the standpoint of the security of the country with a view toward possible investigation, interrogation or action at some future date. We propose to rename this index the "Reserve Index." It is felt that this name would be more descriptive as this Index also contains the names of individuals formerly affiliated with subversive organizations other than the Communist Party (CP).

We recognize that some individuals included in this Index represent a greater potential threat than others. For example, individuals in public life who are in a position to exert considerable influence, such as professors who teach the CP line, present more of a threat than would a common laborer. A similar situation exists in connection with our SI and we have taken steps to identify such individuals for priority apprehension. Therefore, in connection with the "Reserve Index" we propose to set up two sections, Section A and Section B.

Section A

We suggest that this Section include those individuals whose subversive activities do not bring them within the SI criteria but who, in a time of national emergency, are in a position to influence others against the national interests or are likely to furnish financial or material aid to subversive elements due to their subversive associations and ideology. Included therein

Enclosure

Memorandum for  
RE: SECURITY INVESTIGATIONS OF INDIVIDUALS  
COMMUNIST INDEX

would be individuals falling within the following categories:  
(1) Professors, teachers and educators; (2) Labor union organizers or leaders; (3) Writers, lecturers, newsmen and others in the mass media field; (4) Lawyers, doctors and scientists; (5) other potentially influential persons on a local or national level; (6) Individuals who could potentially furnish financial or industrial aid.

Maintenance

A reserve index of the names of those individuals falling within Section A to be prepared at the Bureau based upon the field's nomination for inclusion of individuals' names therein with a copy of the index being maintained in the field and at the Bureau the same as is done in the case of our SI cards.

We feel that the cases on these individuals should be brought up to date annually and evaluated for SI purposes or for retention in the "Reserve Index."

Section B

This Section of the "Reserve Index" could be handled as we are now handling the present CI in the individual field offices.

Standards for inclusion of names in the "Reserve Index" would, at present, be similar to the standards for inclusion in the CI now being maintained in the field offices. Attached for information is a copy of such standards.

For additional information this Index has been scheduled for discussion at the forthcoming Internal Security - Espionage Conference on June 9-10, 1960, the discussion to cover such points as the current adequacy of our standards for inclusion in the Index and the question as to whether we should establish a systematic review on a periodic basis of the cases on the individuals listed in the Index. Following discussion of this matter at the forthcoming Conference, appropriate recommendations will be submitted concerning these problems.



Memorandum for  
RE: SECURITY INVESTIGATIONS OF INDIVIDUALS  
COLLECTIVE INDEX

ACTION:

If you approve, the presently constituted CI will be set up along the lines set forth previously herein. It is believed that by so doing we will have a special group of individuals listed therein who should receive priority consideration with respect to investigation and/or other action following the apprehension of our CI subjects.



COMMUNIST INDEX STANDARDS

I. Membership in a basic revolutionary organization over five years ago, together with some indication of continuing sympathy for the communist movement within the past five years and no reliable evidence of defection.

II. Unverified allegations of such membership within the past five years, coupled with some evidence or information indicating activity or sympathy for the subversive cause within the same period.

III. Leadership in a substantial capacity in a major subversive front group over three years ago, together with some evidence of continuing activity or sympathy for the subversive cause within the past three years and no reliable evidence of disaffection.

IV. Current subversive front membership and/or activity, together with evidence of sympathy for the subversive cause or antagonism toward the present form of government not warranting placing on the Security Index.

V. Membership in the Nation of Islam.



Office Memorandum • UNITED STATES GOVERNMENT

TO : Director, FBI

DATE: 4/22/60

FROM : SAC, San Juan

SUBJECT: [Illegible]

*Handwritten notes:* The [illegible] [illegible] [illegible] [illegible]

It is suggested that a rubber stamp, reading as follows, be used in opening and assigning Security Index cases for special investigation reports:

Reopened, BU 60  
For [illegible]  
Assigned to [illegible]

*Handwritten notes:* [Illegible]

Assignment Procedure

The clerk charged with handling S.I. ticklers, pulls the files on which reports are due for a given month, places a memo to this effect showing due date, and forwards the file to the supervisor for assignment.

Following, containing, the assignment memo prepared, the assignment card, serializes the memorandum, prepares a charge out slip (FD-5), which she places in the file, and forwards the memo and the assignment card to the pertinent agent.

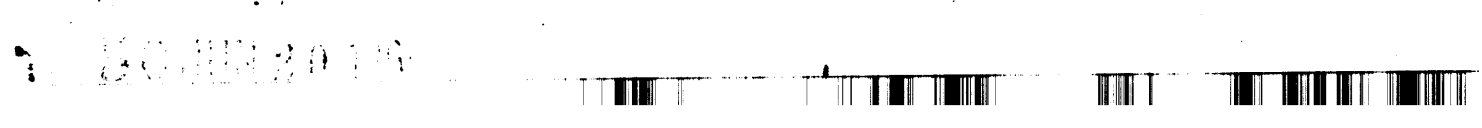
When the memorandum is returned, the file is again opened, the charge-out slip is removed, and the memorandum is placed in the file.

Routing Slip

Slip to be used on the top serial in the file and on Routing Slip (FD-5) by the clerk handling the S.I. ticklers. The first two lines to be filled in prior to submission to the supervisor.

Name of Agent to whom assigned to be filled in by the supervisor, and supervisor's initials placed on the last line.

2 Bureau  
1 San Juan



Memo to the Director, 1/13/60  
Suggestion for Further Study

Disadvantages

None anticipated

Advantages

Use of assignment clerk card with handwritten I.I. numbers saves time in that no memo need be prepared.

Assignment by supervisor involves writing only of name of agent to whom the case is to be assigned (as of present time he writes on the memo, "Open and Assign SA [ ]" or "OSA SA [ ]" and his initials.

Assignment Clerk attaches Assignment Card to Continuation Slip and forwards both to Agent. This obviates need for Check Out Slip (TF-5), which must otherwise be prepared, filed, periodically printed and distributed to all Agents. The routing slip (TF-4) with the stamp informs the agent the type of work to be done, and the Bureau deadline date. The stamp, with the information filled in, constitutes a permanent record of assignment action.



## Memorandum

TO :

DATE: June 10, 1960

FROM :

SUBJECT: SECURITY INVESTIGATIONS OF INDIVIDUALS - RESERVE INDEX

Your memorandum to [redacted] dated 6-3-60 recommended that the presently constituted Communist Index be renamed the "Reserve Index." It also recommended a division of the Index into Section A and Section B, with Section A containing the names of those individuals who are considered to be bringing them within the Security Index criteria, but who are not considered to be in a position to injure or cause damage against the national interests or are likely to furnish material financial aid to subversive elements due to their interests, activities and ideology. Your recommendations with respect thereto were approved.

The Reserve Index was discussed at the Internal Security - Espionage Conference of 6/9-10/60. The Conference recommended a review of the Reserve Index at this time to include (1) certification of residence and employment and (2) file review to determine whether additional investigation warranted or whether an interview with the individual should be considered. During the course of this review those individuals whose names should be included in Section A are to be selected and appropriate recommendations submitted to the Bureau. The Conference felt that if additional investigation was warranted in these cases or if the file contained unreported information, reports should be submitted. The Conference recommended that the review of the Reserve Index be accomplished over a 12-month period.

The Conference considered the present standards for inclusion of individuals' names in the Reserve Index. The Conference felt that the present standards for inclusion of individuals' names in this Index should be revised in order to insure that it fully represented a list of individuals who should be considered for investigative and/or other action following apprehension of Security Index subjects. Specific standards were recommended and are attached hereto.

1 - 1-43 (Internal Security - Espionage Conference)  
Enclosures

Memo #  
RT: SECURITY INVESTIGATIONS OF INDIVIDUALS - RESERVE INDEX

ACTION:

If you agree, there is attached a proposed SAC letter containing instructions with regard to a current review of the Reserve Index; establishment of Section A and Section B of the Reserve Index; maintenance of this Index, and investigative attention and/or other action to be applied to individuals whose names are listed therein.

I think you should  
investigate with  
specialists under  
this program  
should be changed  
to a minimum  
6/14/54  
L. J. [Signature]

## Memorandum

DATE: June 16, 1960

TO :

FROM :

SUBJECT: SECURITY INVESTIGATIONS OF INDIVIDUALS - RESERVE INDEX

In connection with the establishment of the Reserve Index, the division of the Index into two sections, Section A and Section B, and the current review that is being instituted of the Reserve Index, details of which were set out in my memorandum of June 15, 1960, (attached) commented that he thought that personal interviews with subjects under this program should be kept to a minimum. The Director agreed with this observation.

In connection with interviews of subjects of security investigations we currently require the field to obtain Bureau authority in all instances where a delicate situation exists and a greater than usual risk is involved, such as interviews with individuals employed in the newspaper, education and religious fields, radio and television industry, publishing houses and labor leaders. This requirement would virtually force the field to seek Bureau authority to interview in every instance in which an individual's name is included in Section A of the Reserve Index. To insure that we have complete control over interviews with all individuals whose names are included in Section A of the Reserve Index, Manual provisions dealing with this subject matter, presently under preparation, will specify that during the current review and during the subsequent annual review of cases of individuals whose names are included in this Section, Bureau authority must be obtained in each instance prior to interview.

ACTION:

We will closely follow this matter and in each instance in which it appears that chances of embarrassment to the Bureau as a result of an interview with one of these subjects outweigh the possible advantages to be gained from such, authority to interview will be denied.

Enclosure

RESERVE INDEX STANDARDS

1. Membership in a basic revolutionary organization subsequent to January 1, 1949, together with some indication of sympathy or association with such an organization or a subversive front organization subsequent to the reported membership and no reliable evidence of defection.
2. Investigation has failed to substantiate allegations of membership in a revolutionary organization within the past 5 years, and coupled with some evidence, or information, indicating activity, association or sympathy for the subversive cause within the same period, and no reliable evidence of defection.
3. The individual, within the past 5 years, by his associations, writings, financial support or conduct in relation to and support of subversive organizations or the international communist movement is in a position to influence others at the time of a national emergency and no reliable evidence of defection.
4. Leadership or substantial activities in a major subversive front group over 3 years ago, together with some evidence of continuing activity, association or sympathy for the subversive cause within 3 years and no reliable evidence of defection.
5. Membership in a subversive front organization within the past 3 years and no reliable evidence of defection.



UNITED STATES GOVERNMENT

## Memorandum

2756

TO :

DATE: June 17, 1960

FROM :

SUBJECT: SECURITY INDEX

During the past week 17 cards were added to the Security Index and 11 cards were cancelled, a net increase of 6 cards.

The Security Index count as of today is 12,325.

ASST. DIR.

None. For your information.



UNITED STATES GOVERNMENT

## Memorandum

TO :

DATE: June 21, 1960

FROM :

SUBJECT: INTERNAL SECURITY - ESPIONAGE CONFERENCE  
JUNE 9 - 10, 1960

NATION OF ISLAM

The 1959 Internal Security - Espionage Conference in October, 1959, considered the problem presented by the Nation of Islam, which is an all Negro violently anti-white and anti-United States Government semireligious organization. The question examined at that time was whether the Bureau was devoting sufficient attention to the organization and particularly whether the basis for opening cases on individual members was sound. The Conference recommended certain changes which were adopted and further recommended that the question of investigation of members of the Nation of Islam be considered at the next Internal Security - Espionage Conference.

We presently investigate members of this organization who are reported to be (1) functionaries or leaders or (2) active participants carrying out fanatical and disloyal aims of the organization.

Our investigative activity in this field was discussed at the Internal Security - Espionage Conference of June 9-10, 1960, and the Conference was of the unanimous opinion that our present approach to the problem presented by the Nation of Islam is sound and that no changes should be made therein. Cognizance was taken of the fact that we have included in the Security Index the backbones of the organization, namely, the leaders and active participants in carrying out the fanatical aims and purposes of the organization.

ACTION:

We will make no change in the coverage given this group at this time.



Assistant Secretary General

June 21, 1950

Director, I

275

ENCLOSURE

There is a copy of the report of the...  
...and also...  
...of the...  
...of the...

It is requested that this be placed...

Enclosure

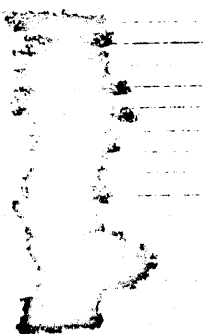
100-550000

NOTE: Classified as pertains to Security Index, none  
of "Top Secret" or "Confidential" designation. The only  
reference to Section of Special Section not included. Item  
designated "Secret" over.

U. S. Government Employees  
United Nations Employees  
Pro-Tito Yugoslavs

*Handwritten notes:*  
K...  
...

*Handwritten:* 100-550000-275



REC-25  
JUN 21 1950

JUN 23 1950

MAIL ROOM TELETYPE UNIT

# Memorandum

TO :

DATE: June 21, 1969

FROM :

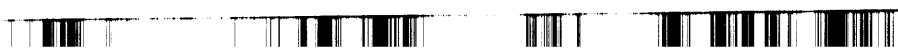
SUBJECT: SECURITY INDEX

During the past week, 13 cards were added to the Security Index and 10 cards were cancelled, a net decrease of 6 cards.

The Security Index count as of today is 12,819.

ACTION:

None, for your information.



UNITED STATES GOVERNMENT

# Memorandum

TO : Mr. [redacted]

DATE: June 21, 1960

FROM : Mr. [redacted]

SUBJECT: [redacted]

Enclosed herewith are two copies of a list of SI subjects for transmittal to the SAC, Quantico, for storage with other SI files records maintained by him:

- 1) Alphabetical list of security index (SI) subjects.
- 2) Geographical list of SI subjects.
- 3) Special Section of the SI.
- 4) List of key figures and top functionaries.
- 5) List of SI subjects out of the country.
- 6) List of missing SI subjects.
- 7) List of subjects whose citizenship status is unknown.
- 8) List of aliens.
- 9) List of SI subjects of Chinese descent.
- 10) List of [redacted]

The SAC should destroy by burning the lists furnished in May, 1960. When this matter has been taken care of, he should note on this report that the lists have been destroyed in the Special Section.

ACTION:

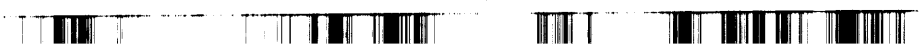
If you agree with this report, the list of SI subjects will be forwarded to Quantico for the above action.

Enclosures  
100-351000

- 1 - SAC, Quantico
- 1 - Mr. [redacted]

RM: [redacted]  
(3)

100-351000-1000  
JUN 23 1960



(C) SECURITY INVESTIGATIONS OF INDIVIDUALS - RESERVE INDEX --  
The presently constituted Communist Index will henceforth be known as the "Reserve Index."

Institute a review of the Reserve Index. In conducting this review the following minimum steps are to be taken in all instances.

1. Verify residence and employment.
2. Conduct an indices search and file review to determine whether investigation is warranted at this time or whether an interview with the individual is deemed desirable. Interviews with the individuals will be handled in accordance with current Bureau instructions set forth in Section 87D of the Manual of Instructions.
3. If additional investigation is conducted or if there is unreported information of a subversive nature contained in the files, a report must be submitted.

The re-examination of the Reserve Index may be made in equal monthly divisions for one year. Advise the Bureau quarterly of your progress.

Recognizing that some individuals included in the Reserve Index represent a greater potential threat in time of an emergency than do others, this Reserve Index is being divided into two sections, Section A and Section B. Each is discussed separately herein.

SECTION A

Section A of the Reserve Index is designed to represent a special group of individuals who should receive priority consideration with respect to investigation and/or other action following the apprehension of our Security Index subjects.

Section A of the Reserve Index should include those individuals whose subversive activities do not bring them within the Security Index criteria, but who, in a time of national emergency, are in a position to influence others against the national interest or are likely to furnish material financial aid to subversive elements due to their subversive associations and ideology. Included in Section A will be those individuals falling within the following categories:

6/21/60  
SAC LETTER NO. 60-30

- 1 -

NOT RECORDED  
102 JUN 30 1960

58 JUL 1 1960



1. Professors, teachers and educators.
2. Labor union organizers or leaders.
3. Writers, lecturers, newsmen, entertainers and others, in the mass media field.
4. Lawyers, doctors and scientists.
5. Other potentially influential persons on a local or national level.
6. Individuals who could potentially furnish material financial aid.

During the course of the re-examination of the Reserve Index, those individuals falling within the above criteria for inclusion in Section A should be selected therefrom, handled in accordance with the above instructions and, thereafter, nominated for inclusion in Section A of the Reserve Index. Appropriate forms for this purpose will be forwarded all offices in the immediate future. Attached to the form recommending the inclusion of the individual's name in Section A of the Reserve Index should be a succinct summary setting forth the basis for your recommendation. If no further investigation is warranted in the case at this time or if no report is accompanying the recommendation, a statement to that effect should appear on the page containing the succinct summary.

Investigations of individuals listed in Section A of the Reserve Index are to be brought up to date annually, and they are to be considered for Security Index status or retention in the Reserve Index. As a minimum, the previously mentioned investigative steps will be taken, including the submission of reports in the event additional subversive data is developed. Changes in residence and/or employment should be submitted to the Bureau on forms to be furnished the field in the immediate future. The administrative handling of the reopening of these cases should be similar to that in the case of annual reports in Security Index cases.

Section A of the Reserve Index will be maintained in the field and at the Seat of Government in the same manner as our Security Index except that this Index will be maintained only alphabetically. A copy of the Index will be relocated away from headquarters city in the same manner as the Security Index and at the same location. To avoid confusion with the Security Index, however, distinctive colored cards and forms used in connection therewith will be utilized.

6/21/60  
SAC LETTER NO. 60-30

## SECTION B

Section B, containing the names of the remaining individuals included in the Reserve Index, will be maintained in the field in the same manner in which the Communist Index is now being maintained.

Upon the deletion of a subject's name from the Security Index based upon the application of the Security Index criteria, it will be necessary to consider whether his name should then be placed in Section A of the Reserve Index. If his name should so be included, submit an appropriate recommendation. If the facts do not justify the inclusion of his name in Section A, the canceled Security Index card should be filed in Section B in accordance with current practice.

### Standards for Inclusion of Names in the Reserve Index

The standards for inclusion of individual's names in the Reserve Index were discussed at the Internal Security - Espionage Conference composed of representatives from certain field offices and Bureau supervisors and officials held at the Bureau on June 9-10, 1960. The Conference recommended revision of our present standards for the inclusion of individual's names in the Reserve Index to insure that it fully represents a list of individuals who should be considered for investigation and/or other action following apprehension of our Security Index subjects. The revised standards follow:

1. Membership in a basic revolutionary organization subsequent to January 1, 1949, together with some indication of sympathy or association with such an organization or a subversive front organization subsequent to the reported membership and no reliable evidence of defection.
2. Investigation has failed to substantiate allegations of membership in a revolutionary organization within the past five years, coupled with some evidence or information indicating activity, association or sympathy for the subversive cause within the same period, and no reliable evidence of defection.
3. The individual, within the past five years, by his associations, writings, financial support or conduct in relation to and support of subversive organizations or the international communist movement is in a position to influence others at the time of a national emergency and no reliable evidence of defection.

6/21/60  
SAC LETTER NO. 60-30

4. Leadership or substantial activities in a major subversive front group over three years ago, together with some evidence of continuing activity, association or sympathy for the subversive cause, within three years and no reliable evidence of defection.

5. Membership in a subversive front organization within the past three years and no reliable evidence of defection.

It is not desired that a wholesale review of closed security cases be conducted in efforts to identify additional individuals whose names should be included in the Reserve Index under the revised standards. However, such names should be added as the cases come to the attention of Agents handling security work.

Very truly yours,

John Edgar Hoover

Director

6/21/60  
SAC LETTER NO. 60-30

~~4~~  
4

## Memorandum

TO :

DATE: June 22, 1960

FROM :

SUBJECT: SECURITY INVESTIGATIONS OF INDIVIDUALS  
RESERVE INDEX

Approval has been obtained for the establishment of the Reserve Index at the Bureau composed of individuals with subversive backgrounds not meeting the Security Index (SI) criteria but who, in a time of national emergency, are in a position to influence others against the national interests, and appropriate instructions concerning this matter have been forwarded to the field.

Recommendations for inclusion of names in this Index are to be submitted to the Bureau and we propose to maintain the Index similar to the present SI. However, we feel that the Index cards should be printed on blue 5 x 8 cards to distinguish from SI cards.

Five Reserve Index cards are to be printed in each instance, one card will be maintained alphabetically in the Voucher - Statistical Section, one card will be maintained alphabetically in each office, one card will be forwarded to Quantico and two cards will be forwarded to the field. It has been determined that an adequate supply of blue cards are in the possession of the Voucher - Statistical Section. However, these cards do not contain descriptive data on one side as is true in the case of SI cards. It is felt that a supply of cards printed with the descriptive data should be ordered for future use. The initial order should be for 10,000 cards.

RECOMMENDATION:

Refer to the Administrative Division, Attention: Voucher - Statistical Section, in order that (1) the mechanics for the handling of field's nominations for Section A of the Reserve Index may be set up and (2) in order that a supply of blue cards bearing the descriptive data may be ordered.



UNITED STATES GOVERNMENT

Memorandum

TO :

DATE: 6/21/50

FROM :

SUBJECT: ~~SECURITY INDEX CARD STATISTICS~~

There are 12,323 persons represented in the Security Index (as of June 15, 1950). Of the total, 10,040 or 81.5% are not on the Security Index.

A detailed table, enclosed in duplicate, shows as of June 15, 1950, the distribution of the subjects by field office, nationalistic tendencies, dangerousness, sex, race, citizenship, and "special lists." A key to abbreviations is enclosed.

Enclosures

KEY TO ABBREVIATIONS USED IN SECURITY INDEX

AL Alien  
DC Detcom  
KF Key Figure  
NA Naturalized

NB Native Born  
TF Top Functionary  
UN Unknown  
AEP Atomic Energy Program Employees

COM Communist Party, USA  
ESP Espionage Subjects  
FGE Foreign Government Employees

GOV United States Government Employees  
ISL Independent Socialist League  
JFG Johnson Forest Group

NOI Nation of Islam  
MIS Miscellaneous  
NPR Nationalistic Party of Puerto Rico  
PPA Proletarian Party of America

RUS Russian  
ASC American Socialist Clubs  
SWP Socialist Workers' Party  
UNE United Nations Employees

UPR Union of the People for the Establishment  
of the Republic of Puerto Rico  
YUG Yugoslavian

ENCLOSURE



2760  
(ENCL)

NUMBER OF VOTERS-STATISTICAL SECTION RECORDS AS OF JUNE 15, 1960

| STATE | (3)<br>NATIONALISTIC TENDENCY OR ORGANIZATION AFFILIATION |   |   |   |   |   |   |   |   |    |    |    | (4)<br>Total |    |    | (5)<br>CITIZENSHIP STATUS |       |       |       | (6)<br>Race |    |     |     | Total |     |     |
|-------|---|---|---|---|---|---|---|---|---|----|----|----|--------------|----|----|---------------------------|-------|-------|-------|-------------|----|-----|-----|-------|-----|-----|
|       | 1   | 2 | 3 | 4 | 5 | 6 | 7 | 8 | 9 | 10 | 11 | 12 | 13           | 14 | 15 | 16                        | 17    | 18    | 19    | 20          | 21 | 22  |     |       |     |     |
| AL    |   |   |   |   |   |   |   |   |   |    |    |    | 2,221        | 25 | 33 | 7,270                     | 5,005 | 9,485 | 1,437 | 102         | 24 | 100 | 100 | 100   | 100 | 100 |
| AK    |   |   |   |   |   |   |   |   |   |    |    |    |              |    |    |                           |       |       |       |             |    |     |     |       |     |     |
| AR    |   |   |   |   |   |   |   |   |   |    |    |    |              |    |    |                           |       |       |       |             |    |     |     |       |     |     |
| CA    |   |   |   |   |   |   |   |   |   |    |    |    |              |    |    |                           |       |       |       |             |    |     |     |       |     |     |
| CO    |   |   |   |   |   |   |   |   |   |    |    |    |              |    |    |                           |       |       |       |             |    |     |     |       |     |     |
| CT    |   |   |   |   |   |   |   |   |   |    |    |    |              |    |    |                           |       |       |       |             |    |     |     |       |     |     |
| DC    |   |   |   |   |   |   |   |   |   |    |    |    |              |    |    |                           |       |       |       |             |    |     |     |       |     |     |
| DE    |   |   |   |   |   |   |   |   |   |    |    |    |              |    |    |                           |       |       |       |             |    |     |     |       |     |     |
| FL    |   |   |   |   |   |   |   |   |   |    |    |    |              |    |    |                           |       |       |       |             |    |     |     |       |     |     |
| GA    |   |   |   |   |   |   |   |   |   |    |    |    |              |    |    |                           |       |       |       |             |    |     |     |       |     |     |
| IA    |   |   |   |   |   |   |   |   |   |    |    |    |              |    |    |                           |       |       |       |             |    |     |     |       |     |     |
| IL    |   |   |   |   |   |   |   |   |   |    |    |    |              |    |    |                           |       |       |       |             |    |     |     |       |     |     |
| IN    |   |   |   |   |   |   |   |   |   |    |    |    |              |    |    |                           |       |       |       |             |    |     |     |       |     |     |
| KS    |   |   |   |   |   |   |   |   |   |    |    |    |              |    |    |                           |       |       |       |             |    |     |     |       |     |     |
| KY    |   |   |   |   |   |   |   |   |   |    |    |    |              |    |    |                           |       |       |       |             |    |     |     |       |     |     |
| LA    |   |   |   |   |   |   |   |   |   |    |    |    |              |    |    |                           |       |       |       |             |    |     |     |       |     |     |
| MA    |   |   |   |   |   |   |   |   |   |    |    |    |              |    |    |                           |       |       |       |             |    |     |     |       |     |     |
| MD    |   |   |   |   |   |   |   |   |   |    |    |    |              |    |    |                           |       |       |       |             |    |     |     |       |     |     |
| ME    |   |   |   |   |   |   |   |   |   |    |    |    |              |    |    |                           |       |       |       |             |    |     |     |       |     |     |
| MI    |   |   |   |   |   |   |   |   |   |    |    |    |              |    |    |                           |       |       |       |             |    |     |     |       |     |     |
| MN    |   |   |   |   |   |   |   |   |   |    |    |    |              |    |    |                           |       |       |       |             |    |     |     |       |     |     |
| MO    |   |   |   |   |   |   |   |   |   |    |    |    |              |    |    |                           |       |       |       |             |    |     |     |       |     |     |
| MS    |   |   |   |   |   |   |   |   |   |    |    |    |              |    |    |                           |       |       |       |             |    |     |     |       |     |     |
| MT    |   |   |   |   |   |   |   |   |   |    |    |    |              |    |    |                           |       |       |       |             |    |     |     |       |     |     |
| NE    |   |   |   |   |   |   |   |   |   |    |    |    |              |    |    |                           |       |       |       |             |    |     |     |       |     |     |
| NH    |   |   |   |   |   |   |   |   |   |    |    |    |              |    |    |                           |       |       |       |             |    |     |     |       |     |     |
| NJ    |   |   |   |   |   |   |   |   |   |    |    |    |              |    |    |                           |       |       |       |             |    |     |     |       |     |     |
| NM    |   |   |   |   |   |   |   |   |   |    |    |    |              |    |    |                           |       |       |       |             |    |     |     |       |     |     |
| NY    |   |   |   |   |   |   |   |   |   |    |    |    |              |    |    |                           |       |       |       |             |    |     |     |       |     |     |
| NC    |   |   |   |   |   |   |   |   |   |    |    |    |              |    |    |                           |       |       |       |             |    |     |     |       |     |     |
| ND    |   |   |   |   |   |   |   |   |   |    |    |    |              |    |    |                           |       |       |       |             |    |     |     |       |     |     |
| OH    |   |   |   |   |   |   |   |   |   |    |    |    |              |    |    |                           |       |       |       |             |    |     |     |       |     |     |
| OK    |   |   |   |   |   |   |   |   |   |    |    |    |              |    |    |                           |       |       |       |             |    |     |     |       |     |     |
| OR    |   |   |   |   |   |   |   |   |   |    |    |    |              |    |    |                           |       |       |       |             |    |     |     |       |     |     |
| PA    |   |   |   |   |   |   |   |   |   |    |    |    |              |    |    |                           |       |       |       |             |    |     |     |       |     |     |
| RI    |   |   |   |   |   |   |   |   |   |    |    |    |              |    |    |                           |       |       |       |             |    |     |     |       |     |     |
| SC    |   |   |   |   |   |   |   |   |   |    |    |    |              |    |    |                           |       |       |       |             |    |     |     |       |     |     |
| SD    |   |   |   |   |   |   |   |   |   |    |    |    |              |    |    |                           |       |       |       |             |    |     |     |       |     |     |
| TN    |   |   |   |   |   |   |   |   |   |    |    |    |              |    |    |                           |       |       |       |             |    |     |     |       |     |     |
| TX    |   |   |   |   |   |   |   |   |   |    |    |    |              |    |    |                           |       |       |       |             |    |     |     |       |     |     |
| UT    |   |   |   |   |   |   |   |   |   |    |    |    |              |    |    |                           |       |       |       |             |    |     |     |       |     |     |
| VA    |   |   |   |   |   |   |   |   |   |    |    |    |              |    |    |                           |       |       |       |             |    |     |     |       |     |     |
| VT    |   |   |   |   |   |   |   |   |   |    |    |    |              |    |    |                           |       |       |       |             |    |     |     |       |     |     |
| WA    |   |   |   |   |   |   |   |   |   |    |    |    |              |    |    |                           |       |       |       |             |    |     |     |       |     |     |
| WI    |   |   |   |   |   |   |   |   |   |    |    |    |              |    |    |                           |       |       |       |             |    |     |     |       |     |     |
| WV    |   |   |   |   |   |   |   |   |   |    |    |    |              |    |    |                           |       |       |       |             |    |     |     |       |     |     |
| WY    |   |   |   |   |   |   |   |   |   |    |    |    |              |    |    |                           |       |       |       |             |    |     |     |       |     |     |
| Total |   |   |   |   |   |   |   |   |   |    |    |    |              |    |    |                           |       |       |       |             |    |     |     |       |     |     |

\* These do not add to total column 2, but are included in sections 3, 5, 6, and 7. Columns KP and TF are included in Column 2.

UNITED STATES GOVERNMENT

## Memorandum

TO :

DATE: June 23, 1960

FROM :

SUBJECT: SECURITY RESTRICTIONS OF FUTURE  
RESERVE INDEX

SAC Letter 60-20 (C) dated June 11, 1960, contained instructions to the field with respect to the establishment of the Reserve Index, the broadening of the Index to Sections A and B, and the review of the Reserve Index.

Numerous changes in Section 87D of the Manual of Instructions are necessary and appropriate. Such changes are attached.

In addition, the Manual of Instructions, Section 87D, currently provides only that the field will advise the Bureau by letter of the death of a Security Index subject. For the completion of the Department's files we have been directing letters to the Department in such cases. The attached manual change includes a requirement that the field submit letterhead memoranda in the case of the death of Security Index subjects. A copy of the letterhead memorandum will be disseminated to the Department, thus eliminating the necessity for the preparation of a letter at the Bureau.

ACTION:

If you approve, the attached manual changes should be forwarded to the Training and Inspection Division for appropriate attention.

Enclosure

- 1 - Training and Inspection Division
- 1 -
- 1 -
- 1 -

July 11, 1950

MEMORANDUM FOR THE DIRECTOR

Subject: Security Index and "Communist Party of America" as page 10 of the "Security Index" and the "Security Index" July 11, 1950 submitted herewith.

a. Reserve Index

(1) Purpose

The Reserve Index is designed to report those persons who, in the light of the conditions, should be placed in the Reserve Index as a result of the investigation of the individual or action under the Security Index. The index containing a central repository of information of individuals having connections with the Communist Party or other organizations of individuals.

(2) Individuals to be included

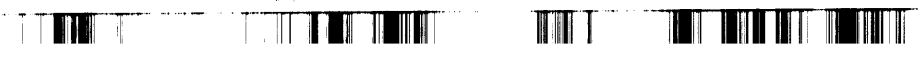
Individuals to be included in the Reserve Index, following investigation, are individuals who not justly are included in the Security Index. The Security Index is a list of individuals who are considered to be:

(a) Individuals in a position of responsibility in an organization who are known to have had contact with such individuals of the Security Index, and such individuals are known to have been subjected to the reported concerns and to have evidence of deception.

(b) Investigation has failed to substantiate allegations of membership in a revolutionary organization which has been listed in the Security Index.

NOTES: See memo to the Director dated 6/15/50, captioned "Security Investigations of Individuals - Reserve Index." No handbook changes necessary.

(7) MAIL ROOM  TELETYPE UNIT



*Proposed Changes in Section 87D of the  
Manual of Instructions*

*with some evidence or information indicating  
activity, association or sympathy for the  
cause, or other like conduct, and  
no reliable evidence of defection.*

*(c) The individual, within the past five  
years, in his associations, writings, financial  
support or conduct in relation to and support  
of subversive organizations or the international  
communist movement is in a position to influence  
others at the time of a national emergency and  
no reliable evidence of defection.*

*(d) Leadership or substantial activities  
in a major subversive front group over three  
years ago, together with other evidence of  
continuing activity, association or sympathy  
for the subversive cause within three years and  
no reliable evidence of defection.*

*(e) Membership in a subversive front  
organization within the past three years and  
no reliable evidence of defection.*

**(3) Arrangement**

*This Index is to be maintained in two sections,  
Section A and Section B. Each Section will be maintained  
alphabetically on 6 x 8-inch cards.*

**(a) Section A**

*Section A of the Reserve Index is designed  
to represent a special group of individuals who should  
receive priority consideration with respect to  
investigation and/or other action following the  
apprehension of security index subjects.*

*Section A should include those individuals  
whose subversive activities do not bring them within  
the Security Index criteria but who, in a time of  
national emergency, are in a position to influence*







Personnel files of the  
Department of Justice

(4) Section

Personnel files of the Department of Justice  
contain the following information:

Name on record  
Date

Organizational classification or position

Citizenship

Employment

Office file number

In addition, the position and position or association  
in a subsequent group or rating, and the date of the  
date of the information may be shown.

(5) Removal and deletion of cards

Section cards on individuals who have  
become security classified or citizens or who subsequently  
become subjects of security in a card, or who  
are removed from the file only in the case of Section 8  
cards.

Subjects of Section 8 cards who are removed  
interoffice or inter-agency authority, therefore, the  
following should be noted in the file and reading "inter  
bureau authority" or similar.

ii. Subjects of Section 8 cards in the cards

The sentence reading "Section 8 security index card  
without a name classification" should be deleted from the  
personnel file of the individual. The name of the  
card should be noted in the personnel file and the  
card should be destroyed.

Approved Change in Section 812 of the  
Manual of Instructions

Director's Office Memorandum for Field with Bureau  
authority and advice herein by letterhead  
message.

Items II and III beginning "Item" cancelled across  
face of each card. The name of the subject in the index and  
description of the activity in the description column should be retained  
and the following instructions followed:

Item I should be cancelled across face of each card  
being retained and filed in the Security Index.

Item II should be cancelled across face of each card  
being placed in Section 4 of the Security Index. If  
his name should be included in Section 4, submit  
Form 8-14.

All references to the "Communist Index" appearing  
under Item 1, 2, 3, 4, 5, 6, 7, 8, 9, 10, 11, 12, 13, 14, 15, 16, 17, 18, 19,  
Security Index and Communist Index" appearing on page 10  
should be deleted and the words "Security Index" substituted  
therefor.



## Memorandum

TO :

DATE: June 28, 1960

FROM :

SUBJECT: SECURITY INVESTIGATIONS OF INDIVIDUALS  
SECURITY INDEX CRITERIA

Inspector [redacted] and I conferred with [redacted] Attorneys [redacted] and [redacted] of the Internal Security Division on 6/27/60. The application of the Security Index (SI) criteria (attached) to the individual cases was discussed.

From the discussion it was clear that the application of the criteria by the Bureau and the Departmental attorneys concerning the individual cases was in accord. Particular discussion surrounded the application of item (D) of the criteria. It was the consensus of opinion that this particular point of the criteria should be applied sparingly and with sound judgment as to the potential dangerousness of the individual subject. Among the type of cases now arising are individuals with long Communist Party (CP) history since their membership within the past five years. It was felt that this long history in the CP should be given weight in determining an individual on the SI and that usually some "link" factor will exist in the individual case such as, working in the Lenin School, service during the Spanish Civil War, leadership training or participation or activity during the underground period of the CP in various areas.

It was recognized that the facts in each individual case must of necessity govern the decision as to the retention on the SI. However, all of the individuals participating in the discussion felt that there was a meeting of the minds between the Bureau and the Department in the broad application of all four points of the SI criteria.

ACTION:

This is being submitted as a matter of record.

Enclosure

2764  
(ENCL.)

SECURITY INDEX CRITERIA

(A) Subject has had membership or participation in the activities of a basic revolutionary organization within the last 5 years as shown by overt acts or statements established through reliable sources, informants, or individuals.

(B) Subject has had membership or participation in the affairs of one or more front organizations, which adhere to the policies and doctrines of a revolutionary group, in a leadership capacity or by active substantial participation in the furtherance of the aims or purposes of the front organizations within the last 3 years as shown by overt acts or statements established through reliable sources, informants, or individuals.

(C) Investigation has developed information that an individual, though not a member or a participant in the activities of a subversive organization, has anarchist or revolutionary beliefs and is likely to seize upon the opportunity presented by a national emergency to endanger the public safety as shown by overt acts or statements within the last 3 years established through reliable sources, informants, or individuals.

(D) Although investigation has failed to establish overt acts or statements on the part of a subject within the time limits set out above, facts have been developed which clearly and unmistakably depict the subject as a dangerous individual who could be expected to commit acts inimical to the national defense and public safety of the U. S. in time of emergency.

2764  
RECORDED

July 30, 1950

MEMORANDUM FOR THE DIRECTOR

1. Title

Proposed directive, the purpose of which is to provide for the establishment of a Security Index in the event of an emergency and the development of evidence of violations of Federal statutes on the part of individuals who are the subject of a security investigation, it is determined that a subject does not have a potential threat to the internal security of the United States if the inclusion of his name in the Security Index is not warranted.

2. Purpose

Because of affiliation with subversive organizations, a potential threat to the internal security of the United States in the event of an emergency and the development of evidence of violations of Federal statutes on the part of individuals who are the subject of a security investigation, it is determined that a subject does not have a potential threat to the internal security of the United States if the inclusion of his name in the Security Index is not warranted.

3. Scope

Field wide.

4. Tie In With Other Activities

Closely related is the FBI, which deals with plans for the handling of individuals included in the Security Index in the event of an emergency. Also closely related are the various programs of other Government agencies, such as the FBI, which are dependent to a large extent on information developed by the Security Index to such agencies.

- 1 -
- 1 -
- 1 -

(Security Index) - *Jed*

NOV 2 1950  
194 JUL 2 1950

ADMINISTRATIVE CONTROL SECTION  
PROGRAM EVALUATION

5. Classification

Basically, the current fall in security classifications (C, 100 and 101) was the period December, 1959, to January, 1960. During this period, the total number of classifications was 15,773 placed in active status.

The Administrative Control Section is primarily responsible for investigations of individuals under the 100 classification, although we do have a list of individuals under the 101 classification, including the identification of the remaining copy of the list. There was a fairly large number of 100 pending active matters in classification 100 throughout the field.

6. Personnel

This program is under the supervision of costs and man power and, as such, is referred to in the budget material.

7. Cost of Program Maintenance

Class attention is given to the field in efforts to insure that the responsibilities thereunder. During the past six months certain instructions have been issued to the field dealing with security investigations of individuals, including the identification of individuals dealing with the identification and investigation of members of the Communist Party (Quiet to Albany, cc's and 6/11/60, 6/21/60, 6/21/60 "Security investigations of individuals; pointing out to the field the potential in the case of subversives of individuals employed in the U. S. Post Office and Post Office employees (3-3-60) and in obtaining temporary employment as census enumerators (3-3-60) and (3-3-60). In addition, SAC Letter 66-30 dated 6-21-60 contained instructions with respect to the review of the field during the next year.

8. Administrative Controls

The field is followed closely as to its overall compliance in the three security classifications mentioned previously. This is handled on a monthly basis. In addition, we have a monthly tickler on pending matters in the field which are not reported and we follow the field for submission of periodic reports on Security in order to insure that such are submitted when due.



a potential source to the internal security of the country. When such information is available, it is the duty of the internal security division to take appropriate action.

We presently have internal information that at least one source in every respect should be considered as a potential source to the internal security of the country. It is the duty of the internal security division to take appropriate action to insure that such sources are properly handled therefor.

At the recent Internal Security Division meeting on 6-9/10-60 the criteria recently utilized in the subject of discipline. The consensus was in opinion that the existing Security Index is the basis for the evaluation of such cases from a Security Index standpoint.

INTERNAL SECURITY DIVISION

During the course of security investigations we are continually aware of violations of the Federal Espionage Act. One of the principal violations of the Federal Espionage Act is the disclosure of information relating to the internal security of the United States. Such violations are primarily from the source of information received in the Division are handled on an individual basis. In these cases because of security and the subject's interest in the United States, it is necessary to take appropriate action of discipline. Consequently, we are currently in the process of supervision, as well as internal security, in the subject's discipline. It is the duty of the internal security division to take appropriate action to insure that such sources are properly handled therefor.

Since January 1, 1960, we have received 91 cases with an average of 1.1 cases per month.



Memo to  
RE: SECURITY CONTROL SECTION  
PROGRAM EVALUATION

ALL INFORMATION CONTAINED HEREIN IS UNCLASSIFIED EXCEPT WHERE SHOWN OTHERWISE

Security reports are disseminated to numerous interested agencies throughout the Executive Branch of the Government. For the past several years, a large number of such reports have been disseminated to the public. The responsibility of such dissemination necessitates careful and thorough evaluation of each report to assure that it is adequately accurate and in format to be used.

Security programs of other branches of the Executive Department have been largely exempt on information disseminated by the FBI. Following the Parker vs. Lester decision, however, the such entities must accord adequate respect to the privacy of the subjects of security hearings should be conferred with the witnesses against them (49-50). There has been an increasing tendency on the part of primarily the United States Coast Guard and the intelligence agencies of the military to request of the Bureau the availability and identities of various sources, set forth in our reports, for utilization in administrative hearings in connection with security programs required by these agencies.

Receipt of requests from such agencies for availability of witnesses are referred to the field with appropriate instructions. The final decision with respect to whether a witness can be made available to the requesting agency is in each instance made at the Bureau. In such cases, it is necessary to consider the possible effect on the Bureau's internal security responsibilities should the witness be made available for testimony. In addition, when advising these agencies of the availability of the potential witnesses, it is essential that we also advise such agencies of any information contained in our files reflecting upon the reliability or credibility of such witnesses.

During the period January 1 - June 30, 1960, we received requests concerning the availability of approximately 363 witnesses of which 57 were made available as potential witnesses in administrative hearings conducted by other agencies of the Executive Branch.

ACTION:

This program and various facets thereof will continue to receive close attention in this Section.

June 25, 1968

Annual Review of Security Information  
Program

1. Origin

Annual reviews in Security Information (SI) were initiated by the Department of Defense in 1964. In certain instances, reports were required to be submitted in certain instances for key personnel, i.e. key figures, top functionaries.

2. Purpose

To insure that current information is available to the Bureau in order that it may be able to identify, locate, and report on individuals who are or may be engaged in activities which are or may be detrimental to the executive branch of the Government.

3. Scope

All offices participate in this program.

4. Relationship to Other Programs

Closely related to the Emergency Detention Program, which deals with the detention of certain individuals who are or may be engaged in activities which are or may be detrimental to the executive branch of the Government.

5. Compliance

As of 6-15-68 there were 12,322 SI entries, and 1,200 reports; many (8) top functionaries, and 33 individuals considered as "top functionaries."

- 1 - (SI)
- 1 -
- 1 -
- 1 -

JUL 5 1968

NAVY DEPARTMENT  
102



Memorandum for  
RE: INVESTIGATIVE SECTION  
GENERAL EXAMINATION  
ECONOMIC REPORTS PROGRAM

Highest degree of leadership in subversive organizations and their activities are consistently being utilized. (C) Key individuals - usually a small number of key individuals are being identified and followed. These individuals represent leadership in subversive activity on regional, district and state levels and we follow their activities closely. Key individuals are being identified at various key plants throughout the country designated by the Department of Defense as key facilities. Semi-annual reports are required in these areas to insure that the key individuals in various branches of the Department of Defense fully informed of the activities of these individuals.

#### 6. Summary

This is a major program as evidenced by the fact that in all SI cases investigations must be reported to the Bureau and reports submitted at specified intervals on all SI subjects. Under this program there would be approximately 1,000 separate reports submitted annually. This does not include information on the reports of individuals currently being furnished for the SI.

#### 7. Administrative Controls

Each supervisor including a priority letter case will utilize a tickler system to insure that reports are submitted when due by the field. In addition, the field is required to advise the Bureau twice yearly, 3-1 and 9-1, of the status of this program.

#### 8. Adequacy and Currentness of Instructions

Instructions dealing with this program are found in Section 675 of the Manual of Instructions. This section of the manual is up to date.

#### 9. Over-all Value

Data dealing with this program is included in the budget material. In addition, this program enables us to track fully over the SI status of each individual subject on at least an annual basis. When information is developed clearly indicating that a



MEMORANDUM FOR THE RECORD

1. Introduction

The purpose of this memorandum is to provide information regarding the proposed changes in the structure of the organization.

2. Background

The need for these changes arises from the increasing complexity of the organization's operations and the necessity of providing better coordination.

3. Proposed Changes

Field office

4. Comments

This is not a major program for the organization and should be handled accordingly.

5. Recommendations

It is recommended that the proposed changes be implemented as soon as possible to ensure the smooth operation of the organization.

1 - Mr. Tolson  
1 - Mr. Boardman  
1 - Mr. Nichols  
1 - Mr. Belmont  
1 - Mr. Ladd  
1 - Mr. Clegg  
1 - Mr. Glavin  
1 - Mr. Harbo  
1 - Mr. Rosen  
1 - Mr. Tracy  
1 - Mr. Egan  
1 - Mr. Gurnea  
1 - Mr. Hendon  
1 - Mr. Pennington  
1 - Mr. Quinn  
1 - Mr. Nease  
1 - Miss Gandy

NOT RECORDED  
102



Memo to [redacted]  
RE: SENSITIVE CENTRAL SECTION  
PERIODIC EVALUATION

ACTION:

It will be necessary to follow this program closely to insure that field delinquency in security classifications is kept at a minimum.



UNITED STATES GOVERNMENT

*Memorandum*

TO :

DATE: July 1, 1960

FROM :

SUBJECT: SECURITY INDEX

During the past week, 10 cards were added to the Security Index and 13 cards were cancelled, a net decrease of 3 cards.

The Security Index count as of today is 12,316.

ACTION:

None. For your information.



UNITED STATES GOVERNMENT

Memorandum

TO :

DATE: 6/27/60

FROM :

SUBJECT: SUGGESTION #787-60  
SUBMITTED BY  
NEWARK DIVISION

SUGGESTION: That in security-type cases copies of dissemination memoranda designated for numerous files in the field be destroyed after they have been reviewed and reported pointing out that the original is maintained in another file.

suggestion has previously been acknowledged by letter from the Director.

ADVANTAGES: feels that a great deal of filing space would be saved by destroying copies of dissemination memoranda.

CURRENT PRACTICE: Copies of dissemination memoranda are now filed as serials and maintained until such time as they should be destroyed under existing rules for destruction of files.

CONCLUSIONS: Suggestions similar to the current one date back to September, 1952. Latest consideration given on 2/19/58, at which time it was approved that the present procedure be retained. The following objections to destroying channelizing memoranda were noted: (1) Agents should have all facts in informants reports available for review and if channelizing memoranda were destroyed it would necessitate time consuming search for original informants report to obtain same. (2) That as security reports are prepared for future prosecution should there be an emergency and prosecutions were had on wholesale basis involving Security Index Subjects it would be virtually impossible for the many agents involved to review the original reports or original of the channelizing memoranda due to the great demands which would be made for such material. (3) Often valuable intelligence material would be destroyed since such information may not be incorporated into the investigative report; therefore, it would be necessary for agents to review the original informant reports if the copies of the channelizing memoranda were destroyed.

- Latest consideration has been given to the idea of destroying copies of channelizing memoranda at the Internal Security - Espionage Conference which was held on June 9 - 10/1960. The Conference recommended and it was approved for the Chicago and San Francisco offices to destroy copies of channelizing memoranda on a six-month basis. If it is determined to be feasible to destroy copies of such memoranda



Memorandum  
Suggestion #787-60

on a field-wide basis, appropriate instructions will be issued by the Domestic Intelligence Division. The results of this trial experience will be known in December, 1960.

In view of the above, it is not possible to advise whether her proposal has been adopted. Her suggestion has previously been acknowledged and it is felt that the only alternative in this matter is to wait until December when it will be known whether her idea is going to be adopted.

**RECOMMENDATION:** That this suggestion be held as a pending, inactive one until December, 1960.

66-15263-1057A

April 23, 1960

PERSONAL

Federal Bureau of Investigation  
Newark, New Jersey

Dear

I have received your suggestion that certain serials be destroyed in security-type cases. I am having a careful study made of your idea and in the event a favorable determination is reached you will be advised.

I want to take this opportunity to express my appreciation for the interest which prompted you to make this suggestion.

Sincerely yours,

J. Edgar Hoover <sup>79</sup>

(Suggestion #787-60, dated 4/14/60)——

Referred to the Domestic Intelligence Division  
for views and recommendations.



# Memorandum

TO :

DATE: July 8, 1960

FROM :

SUBJECT: SECURITY INDEX

The following is a report on the status of the Security Index since the last count was furnished to you on June 10, 1960:

| <u>Week of:</u>  | <u>New Cards Added</u> | <u>Cards Cancelled</u> | <u>Net Change</u> |
|------------------|------------------------|------------------------|-------------------|
| June 13-17       | 17                     | 11                     | + 6               |
| June 20-24       | 12                     | 18                     | - 6               |
| June 27 - July 1 | 10                     | 13                     | - 3               |
| July 5-8         | <u>9</u>               | <u>21</u>              | <u>-12</u>        |
| <b>Total</b>     | <b>48</b>              | <b>60</b>              | <b>-12</b>        |

During the above-mentioned period, there was a net decrease in the Security Index of 12.

For your information, during the preceding four-week period, 48 cards were added to the Security Index and 68 cards were cancelled, resulting in a net decrease of 20.

The Security Index count as of today is

12,375.

ACTION:

This is for your information.



Memorandum

TO :

DATE: July 15, 1960

FROM :

SUBJECT: SECURITY INDEX

During the past week 22 cards were added to the Security Index and 27 cards were canceled, a net decrease of 5 cards.

The Security Index count as of today is 12,302.

ACTION:

None. For your information.



UNITED STATES GOVERNMENT

*Memorandum*

TO :

DATE: July 11, 1960

FROM :

SUBJECT: DELINQUENCY IN SECURITY INVESTIGATIONS

SYNOPSIS:

Each month we follow the field closely on the status of security work by analyzing the backlog of pending matters in delinquency in espionage, internal security, security matters and foreign intelligence cases in classifications (S, C and R). Status of these cases as of June 30, 1960, is set forth below.

In June, there was an increase in pending active matters in the entire field in the security classifications from 17,229 to 17,229. Delinquent matters increased from 1,308 to 1,323. The percentage of delinquent matters decreased from 8.4% to 7.7%.

Letters are being sent to the offices indicated by asterisks on page four herein, commenting on their delinquency and pointing out the necessity of bringing their security cases to a current status.

RECOMMENDATION:

The field will continue to be followed closely regarding security delinquency and you will be advised of the results of the review of the July, 1960, administrative reports.

Memorandum for  
RE: DELINQUENCY IN SECURITY INVESTIGATIONS

DETAILS:

The June, 1960, administrative reports from all offices reflect that the total pending active matters in classifications 65, 100 and 105 increased from 15,598 to 17,229. Delinquent items increased from 1,308 to 1,323. The percentage of delinquent items decreased from 8.4% to 7.7%.

The following statistics reflect the status of pending work, including both pending active and pending inactive matters, and delinquency for all field divisions for the last four months.

TOTAL PENDING MATTERS  
CLASSIFICATIONS 65, 100 AND 105  
ALL FIELD DIVISIONS

| <u>Classification</u> | <u>3/31/60</u> | <u>4/30/60</u> | <u>5/31/60</u> | <u>6/30/60</u> |
|-----------------------|----------------|----------------|----------------|----------------|
| 65                    | 557            | 510            | 504            | 537            |
| 100                   | 10,480         | 10,127         | 10,095         | 11,235         |
| 105                   | <u>7,259</u>   | <u>7,276</u>   | <u>7,201</u>   | <u>7,660</u>   |
| Total                 | 18,296         | 17,913         | 17,800         | 19,432         |

TOTAL DELINQUENT MATTERS  
CLASSIFICATIONS 65, 100 AND 105  
ALL FIELD DIVISIONS

| <u>Classification</u> | <u>3/31/60</u> | <u>4/30/60</u> | <u>5/31/60</u> | <u>6/30/60</u> |
|-----------------------|----------------|----------------|----------------|----------------|
| 65                    | 35             | 21             | 15             | 13             |
| 100                   | 672            | 866            | 795            | 783            |
| 105                   | <u>453</u>     | <u>558</u>     | <u>498</u>     | <u>527</u>     |
| Total                 | 1,160          | 1,445          | 1,308          | 1,323          |

Memorandum for  
RE: DELINQUENCY IN SECURITY INVESTIGATIONS

The following statistics reflect the number of pending active cases, delinquent matters and delinquent matters in offices during the past six months.

CLASSIFICATIONS 65, 100 AND 105  
ALL FIELD OFFICES

| <u>Date</u> | <u>Pending Active Cases</u> | <u>Delinquent Matters</u> | <u>Percentage Delinquent</u> |
|-------------|-----------------------------|---------------------------|------------------------------|
| 1/31/60     | 15,540                      | 1,798                     | 11.6%                        |
| 2/29/60     | 15,854                      | 1,511                     | 9.5%                         |
| 3/31/60     | 16,107                      | 1,160                     | 7.2%                         |
| 4/30/60     | 15,646                      | 1,445                     | 9.2%                         |
| 5/31/60     | 15,598                      | 1,388                     | 8.9%                         |
| 6/30/60     | 17,229                      | 1,323                     | 7.7%                         |

Status of Security Investigations Offices

Each office is listed according to the percentage of delinquency on June 30, 1960, in total matters in classifications 65, 100 and 105. These statistics reflect the progress during year, 1960.

Memorandum for  
 RE: DELINQUENCY IN SECURITY INVESTIGATIONS

| Office         | Active Matters |         | Percentage Delinquent |         |
|----------------|----------------|---------|-----------------------|---------|
|                | 5/31/60        | 6/30/60 | 5/31/60               | 6/30/60 |
| *Phoenix       | 54             | 55      | 7.4%                  | 26.6%   |
| *Atlanta       | 89             | 146     | 13.5%                 | 15.8%   |
| Denver         | 75             | 75      | 14.7%                 | 14.7%   |
| Buffalo        | 274            | 313     | 11.0%                 | 13.1%   |
| Miami          | 296            | 309     | 10.5%                 | 12.0%   |
| Baltimore      | 410            | 375     | 7.1%                  | 11.7%   |
| Detroit        | 683            | 779     | 16.0%                 | 10.3%   |
| Minneapolis    | 222            | 228     | 8.1%                  | 9.6%    |
| New York       | 3814           | 4293    | 10.3%                 | 9.5%    |
| Albany         | 292            | 174     | 3.9%                  | 9.2%    |
| St. Louis      | 137            | 131     | 7.3%                  | 9.2%    |
| Chicago        | 1032           | 1088    | 9.6%                  | 9.1%    |
| Anchorage      | 16             | 23      | 0.0%                  | 8.7%    |
| Los Angeles    | 1559           | 1754    | 10.6%                 | 8.6%    |
| Dallas         | 67             | 61      | 0.0%                  | 8.2%    |
| Houston        | 48             | 51      | 2.1%                  | 7.8%    |
| El Paso        | 21             | 26      | 5.0%                  | 7.7%    |
| Cleveland      | 438            | 491     | 5.5%                  | 7.5%    |
| Louisville     | 30             | 28      | 3.3%                  | 7.1%    |
| New Orleans    | 56             | 70      | 3.6%                  | 7.1%    |
| San Francisco  | 1287           | 1394    | 10.0%                 | 7.1%    |
| Seattle        | 362            | 383     | 4.7%                  | 7.0%    |
| Newark         | 605            | 667     | 8.8%                  | 6.7%    |
| Jacksonville   | 46             | 46      | 2.2%                  | 6.5%    |
| New Haven      | 244            | 241     | 7.3%                  | 6.2%    |
| Philadelphia   | 543            | 614     | 6.5%                  | 5.7%    |
| Boston         | 714            | 391     | 6.3%                  | 5.1%    |
| Cincinnati     | 104            | 100     | 0.0%                  | 5.0%    |
| Richmond       | 30             | 40      | 6.6%                  | 5.0%    |
| Milwaukee      | 127            | 151     | 15.0%                 | 4.6%    |
| San Diego      | 130            | 117     | 5.4%                  | 4.3%    |
| Pittsburgh     | 212            | 237     | 6.6%                  | 4.2%    |
| Portland       | 102            | 118     | 2.9%                  | 4.2%    |
| Tampa          |                | 71      |                       | 4.2%    |
| Salt Lake City | 49             | 49      | 2.4%                  | 4.1%    |

\*Letter being sent re delinquent status.



Memorandum for  
 RE: DELINQUENCY IN SECURITY INVESTIGATIONS

| Office           | Active Matters |         | Percentage Delinquent |         |
|------------------|----------------|---------|-----------------------|---------|
|                  | 5/31/60        | 6/30/60 | 5/31/60               | 6/30/60 |
| Indianapolis     | 140            | 178     | 5.7%                  | 3.9%    |
| Savannah         | 30             | 28      | 0.0%                  | 3.6%    |
| Norfolk          | 32             | 30      | 9.4%                  | 3.3%    |
| Kansas City      | 76             | 81      | 7.9%                  | 2.5%    |
| Omaha            | 71             | 90      | 2.8%                  | 2.2%    |
| San Juan         | 179            | 194     | 1.7%                  | 2.1%    |
| Charlotte        | 43             | 50      | 6.3%                  | 2.0%    |
| Springfield      | 72             | 62      | 1.4%                  | 1.6%    |
| Washington Field | 1114           | 1128    | 2.2%                  | 1.3%    |
| Albuquerque      | 26             | 28      | 3.8%                  | 0.0%    |
| Birmingham       | 43             | 38      | 7.0%                  | 0.0%    |
| Butte            | 46             | 33      | 0.0%                  | 0.0%    |
| Honolulu         | 27             | 32      | 0.0%                  | 0.0%    |
| Knoxville        | 11             | 22      | 0.0%                  | 0.0%    |
| Little Rock      | 10             | 9       | 0.0%                  | 0.0%    |
| Memphis          | 21             | 27      | 4.8%                  | 0.0%    |
| Mobile           | 18             | 62      | 16.7%                 | 0.0%    |
| Oklahoma City    | 35             | 32      | 2.9%                  | 0.0%    |
| San Antonio      | 20             | 29      | 0.0%                  | 0.0%    |

*Memorandum*

TO :

DATE: July 20, 1960

FROM :

SUBJECT: SECURITY INVESTIGATIONS OF INDIVIDUALS -  
RESERVE INDEX

All necessary instructions dealing with the establishment of Section A of the Reserve Index and forms to be used in connection therewith are in the hands of all field offices. We should begin to receive nominations for inclusion in Section A of the Reserve Index in the immediate future. Plans have been completed with the Statistical Voucher Section for the handling of this matter. The mechanics thereof as the handling in the Subversive Control Section will be as follows.

1) The field's nominations for inclusion in the Reserve Index, Section A, will be reviewed by the substantive case supervisor; the unit supervisor in charge and by my office with final approval on the section chief's level except very close cases which will be referred to you for a decision.

2) The field's recommendation will then be forwarded to the Statistical-Voucher Section in order that cards may be printed. Four cards are to be returned to the Subversive Control Section and will be distributed (a) 2 to the field office, (b) 1 will be filed in Room 1256 in strict alphabetical order. The remaining card will be forwarded to the SAC, Quantico, where it will be filed in alphabetical order. These cards are to be filed by the SAC, Quantico, separate and apart from our Security Index cards, a set of which is also maintained at Quantico.

3) Recommendations for deletion from the Reserve Index will be handled similarly. However, the SAC at Quantico, when notified of a deletion from the Reserve Index, should pull the card and destroy it. The card maintained at the Bureau will be destroyed.

4) Additions to, deletions from, and changes in Section A of the Reserve Index will be handled on a daily basis as is the case in connection with our Security Index cards.

Memorandum for  
No: SECURITY AND PROTECTION OF INFORMATION -  
RESERVE INDEX

ACTION:

(1) If you agree, the mechanics for the handling of  
Section A of the Reserve Index will be as listed above.

(2) This memorandum should be routed to the C.I.I. Division  
in order that he may perfect arrangements for the handling of these  
Reserve Index cards as they are received by him.



UNITED STATES GOVERNMENT

*Memorandum*

TO :

DATE: July 23, 1960

FROM :

SUBJECT: SECURITY INDEX

During the past week, 14 cards were added to the Security Index and 17 cards were cancelled, a net decrease of 3 cards.

The Security Index count as of today is 12,289.

ACTION:

None. For your information.

*Memorandum*

TO :

DATE: 7/21/60

FROM :

SUBJECT: SECURITY INDEX CARD STATISTICS

There are 12,520 persons represented in the Security Index (as of July 15, 1960). Of the total, 10,400 or 83.0 per cent are communists.

A detailed table, enclosed in duplicate, shows as of July 15, 1960, the distribution of the subjects by race, nationalistic tendencies, dangerousness, sex, birth, citizenship and "special lists." A key to abbreviations is enclosed.

Enclosures

KEY TO ABBREVIATIONS USED IN SECURITY INDEX

AL Alien  
DC Detcom  
KF Key Figure  
NA Naturalized  
  
NB Native Born  
TF Top Functionary  
UN Unknown  
AEP Atomic Energy Program Employees  
  
COM Communist Party, USA  
ESP Espionage Subjects  
FGE Foreign Government Employees  
  
GOV United States Government Employees  
ISL Independent Socialist League  
JFG Johnson Forest Group  
  
NOI Nation of Islam  
MIS Miscellaneous  
NPR Nationalistic Party of Puerto Rico  
PPA Proletarian Party of America  
  
RUS Russian  
ASC American Socialist Clubs  
SWP Socialist Workers' Party  
UNE United Nations Employees  
  
UPR Union of the People for the Establishment  
of the Republic of Puerto Rico  
YFG Yugoslavian

ENCLOSURE







## Memorandum

LIT

2776

TO :

DATE: July 21, 1969

FROM :

SUBJECT: SECURITY INDEX

We forward to the field quarterly an alphabetical list of each office's Security Index in order that the Security Index cards maintained in the field may be checked and reconciled with Bureau records.

There is attached a proposed letter to all field offices, except Tampa, containing appropriate instructions regarding the handling of the list. Detailed instructions concerning this matter are being forwarded Tampa by separate communication.

RECOMMENDATION:

It is recommended that the attached plastiplate of letter to all field offices (except Tampa) be approved and forwarded.

Enclosure





UNITED STATES GOVERNMENT

## Memorandum

LIST

TO : Mr. ~~XXXXXXXXXX~~

DATE: July 22, 1960

FROM : Mr. ~~XXXXXXXXXX~~

SUBJECT: SECURITY INDEX LISTS

Enclosed herewith is one copy each of the following lists for transmittal to the SAC, Quantico, for storage with other vital records maintained by him:

- 1) Alphabetical list of Security Index (SI) subjects.
- 2) Geographical list of SI subjects.
- 3) Special Section of the SI.
- 4) List of key figures and top functionaries.
- 5) List of SI subjects out of the country.
- 6) List of missing SI subjects.
- 7) List of subjects whose citizenship status is unknown.
- 8) List of aliens.
- 9) List of SI subjects of Chinese descent.
- 10) List of SI subjects sympathetic to communist China.

The SAC should destroy by burning the lists furnished in June, 1960. When this action has been taken, he should so note on this memorandum and return it to the Subversive Control Section.

ACTION:

If you approve, this memorandum and the attached lists will be forwarded to Quantico for the above action.

Enclosures  
100-358086

1 - SAC, Quantico  
1 - Mr. ~~XXXXXXXXXX~~

TDR:baw  
(3)

50 JUL 28 1960

REC-22

5 JUL 28 1960

*Handwritten:*  
7-25-60  
JLH



# Memorandum

TO :

DATE: June 23, 1960

FROM :

SUBJECT: SECURITY INDEX - METHODS OF IDENTIFICATION

The establishment of the Reserve Index at the Bureau and in the field covered of certain individuals with appropriate affidavits is quite sufficient for inclusion in the Security Index. The attached cover and insert contain instructions concerning the establishment of this Index and give to the field.

Contributions for inclusion of individuals' names in the Reserve Index and changes in data appearing on Reserve Index cards will be furnished by the various field offices. The Reserve Index card will contain a copy of the identification procedure appearing on the Security Index card and recommendations for inclusion in the Security Index, changes therein and changes in office of origin in Special Index cards are indicated by Form FD-122 and FD-123, respectively. Consideration has been given to the utilization of similar forms but of a distinctive color in connection with the Reserve Index. However, this Section feels that any possibility of error in the use of these forms outweighs the disadvantages in the preparation of forms exclusively for use of the Reserve Index. An error in the use of the same form for both purposes, even though one was of a distinctive color, could result in our scheduling for apprehension an individual whose name should only be included in the Reserve Index and not in the Special Index.

In view of the above, it is recommended that two forms be prepared for use with the Reserve Index to be numbered Forms FD-122 and FD-123, respectively. It is further recommended that these forms be printed in a distinctive color, preferably blue, and the Reserve Index cards are to be printed on blue paper. In this connection, there are attached rough drafts of the proposed Forms FD-122 and FD-123.

(Form 1) (Form 2)

If you approve, it is recommended that this memorandum and the attachments be referred to the Training and Inspection Division for appropriate attention.

- Enclosures
- 1 - Training and Inspection
- 1 -
- 1 -
- 1 -

(See Attachment, page 2)

RECEIVED



Memorandum to  
Re: SECURITY INVESTIGATIONS OF INDIVIDUALS  
RESERVE INDEX

ADDENDUM: 6/24/60

Training and Inspection Division concurs with recommendation of Domestic Intelligence Division. Proposed forms are designated as Exhibits 1 and 2 and current copies of similar forms are enclosed for comparison as Exhibits 3 and 4 respectively.

Enclosures (4)



Memorandum

2778  
(incl.)

TO : Director, FBI (100-44104)

DATE:

FROM : SA [redacted]

SUBJECT:

If case is included in it a "Section A" Reserve Index Card to be prepared on the above-captioned individual.

The "Section A" Reserve Index Card on this case is to be prepared on [redacted] (Specify name only)

|  |   |
|--|---|
| Name   |   |
| Aliases  |   |
| <input type="checkbox"/> Native Born                     | <input type="checkbox"/> Naturalized                                    |
| <input type="checkbox"/> Alien                           |   |
| <input type="checkbox"/> Communist                       | <input type="checkbox"/> Socialist Workers Party                        |
| <input type="checkbox"/> Miscellaneous (specify) _____   |   |
| Date of Birth  | Place of Birth  |
|  | Sex<br><input type="checkbox"/> Male<br><input type="checkbox"/> Female |
| Race   |   |
| Religion   |   |
| Known Parties  |   |
| Geographical Reference Number _____ Responsibility _____ |   |
| Interests Activities _____                               |   |
| Date of Entry _____                                      |   |

RECEIVED IN MAIL

PRINTED ON RECYCLED PAPER



2778  
(encl.)

UNITED STATES GOVERNMENT

# Memorandum

TO : Director, FBI (encl.)

DATE:

FROM : SAC,

SUBJECT:

It is recommended that a Security Index Card be prepared on the above-captioned individual.

The Security Index Card on the captioned individual should be changed as follows (specify change only):

|   |
|---|
| Name  |
| Aliases   |
| <input type="checkbox"/> Native Born <input type="checkbox"/> Naturalized <input type="checkbox"/> Alien                                  |
| <input type="checkbox"/> Communist <input type="checkbox"/> Socialist Workers Party <input type="checkbox"/> Independent Socialist League |
| <input type="checkbox"/> Miscellaneous (specify) _____  |
| <input type="checkbox"/> Top for Detcom      Race _____      Sex <input type="checkbox"/> Male <input type="checkbox"/> Female            |
| Date of Birth _____      Place of Birth _____   |
| Business Address (show name of employer, business and address)  |
| Key Facility Data   |
| Geographical Reference Number _____      Responsibility _____   |
| Interested Agencies _____   |
| Residence Address   |

REGISTERED MAIL





OPTIONAL FORM NO. 10  
5010-104-01  
UNITED STATES GOVERNMENT  
*Memorandum*

7/78  
(10-2)

TO : Director, FBI

DATE:

FROM : SAC

SUBJECT:

The captioned individual has been the subject of a security investigation by this office. The \_\_\_\_\_ Division has verified the permanent presence of the subject in its Division, residing and working at the addresses listed below. The \_\_\_\_\_ Division is being considered the new office of origin.

|   |
|---|
| Residence address<br>_____<br>_____   |
| Business address<br>_____<br>_____  |
| Check the following applicable statements:<br><input type="checkbox"/> This individual has been the subject of a Reserve Index Card (Section B).<br><input type="checkbox"/> This individual is the subject of a "Section A" Reserve Index Card. (The Bureau is requested to make the appropriate changes in the Reserve Index at the Dept. of Government. The _____ Division should attach the addresses reflected above and the appropriate case file number.)                                  |
| The following pertinent items are being forwarded to the new Office of Origin with its copies of this letter:<br><input type="checkbox"/> Reserve Index Cards<br><input type="checkbox"/> Serials (specify)<br><input type="checkbox"/> Photograph of subject (attach copies of all listed below)<br><input type="checkbox"/> Negative and three copies of most recent or best likeness photograph.<br><input type="checkbox"/> None available.<br><input type="checkbox"/> Previously furnished. |

CC:

Enclosures

F B I

PRINTED AT THE BUREAU OF PRINTING



UNITED STATES GOVERNMENT

# Memorandum

TO : Director, FBI (100- )

DATE:

FROM : SAC

SUBJECT:

The captioned individual has been the subject of a security investigation by this office. The \_\_\_\_\_ Division has verified the permanent presence of the subject in its division as residing and working at the addresses listed below. The \_\_\_\_\_ Division is being considered the new office of origin.

|   |
|---|
| Residence address   |
| -----<br>-----  |
| Business address  |
| -----<br>-----  |
| <p>Check the following applicable statements:</p> <p><input type="checkbox"/> This individual has been the subject of a Communist Index Card.</p> <p><input type="checkbox"/> This individual is the subject of a Security Index Card. (The Bureau is requested to make the appropriate changes in the Security Index at the Seat of Government. The _____ Division should affix the addresses reflected above and the appropriate case file number.)</p> <p><input type="checkbox"/> This subject is talked for Detcom.</p> <p><input type="checkbox"/> This subject is a carrier or a High Officer or Top Functionary.</p> <p><input type="checkbox"/> Handwriting specimens have been furnished to the Bureau.</p> <p><input type="checkbox"/> A photograph has been furnished to the Bureau.</p> <p><input type="checkbox"/> A security index card has been placed with the Investigation Division and a copy has been furnished to the _____</p> |
| <p>The following pertinent items are being forwarded to the new Office of Origin with its copies of this letter:</p> <p><input type="checkbox"/> Security Index Card</p> <p><input type="checkbox"/> Serials (specify)</p> <p><input type="checkbox"/> Photograph of subject (check appropriate item listed below)</p> <p><input type="checkbox"/> Negative and three copies of most recent or best likeness photograph.</p> <p><input type="checkbox"/> None available.</p> <p><input type="checkbox"/> Previously furnished.</p>  |

CC: \_\_\_\_\_ Enclosure(s)



UNITED STATES GOVERNMENT

# Memorandum

TO : Director, FBI (Bufile - )

DATE:

FROM : SAC

SUBJECT:

The captioned individual has been the subject of a security investigation by this office. The \_\_\_\_\_ Division has verified the permanent presence of the subject in its division as residing and working at the addresses listed below. The \_\_\_\_\_ Division is being considered the new office of origin.

Residence address

Business address

**Check the following applicable statements:**

- This individual has been the subject of a Communist Index Card.
- This individual is the subject of a Security Index Card. (The Bureau is requested to make the appropriate changes in the Security Index at the Seat of Government. The \_\_\_\_\_ Division should affix the addresses reflected above and the appropriate case file number.)
- This subject is tabbed for Detcom.
- This subject was carried as a Key Figure or Top Functionary.
- Handwriting specimens have been furnished to the Bureau.
- A photograph has been furnished to the Bureau.
- A security loss notice has been placed with the Identification Division and a copy has been designated therefor.

**The following pertinent items are being forwarded to the new Office of Origin with its copies of this letter:**

- Security Index Cards
- Serials (specify)
- Photograph of subject (check appropriate item listed below)
  - Negative and three copies of most recent or best likeness photograph.
  - None available.
  - Previously furnished.

Registered Mail

CC:

Enclosure(s)

RUC



Routing Slip  
0-7 (Rev. 6-1-60)

Date July 11, 1960

TO SAC:

(Copies to Offices Checked)

- Albany
- Albuquerque
- Anchorage
- Atlanta
- Baltimore
- Birmingham
- Boston
- Buffalo
- Butte
- Charlotte
- Chicago
- Cincinnati
- Cleveland
- Dallas
- Denver
- Detroit
- El Paso

- Honolulu
- Houston
- Indianapolis
- Jacksonville
- Kansas City
- Knoxville
- Little Rock
- Los Angeles
- Louisville
- Memphis
- Miami
- Milwaukee
- Minneapolis
- Mobile
- Newark
- New Haven

- New Orleans
- New York City
- Norfolk
- Oklahoma City
- Omaha
- Philadelphia
- Phoenix
- Pittsburgh
- Portland
- Richmond
- St. Louis
- Salt Lake City
- San Antonio
- San Diego
- San Francisco
- San Juan

- Savannah
- Seattle
- Springfield
- Tampa
- Washington Field
- Quantico

TO LEGAT:

- Bonn
- Havana
- London
- Madrid
- Mexico D. F.
- Ottawa
- Paris
- Rome
- Rio de Janeiro
- Tokyo

RE: **SECURITY INVESTIGATIONS OF INDIVIDUALS -  
RESERVE INDEX**

**FBI FORM BOOK**

- For information     For appropriate action     Surep, by \_\_\_\_\_
- The enclosed is for your information. If used in a future report,  conceal all sources,  paraphrase contents.
- Enclosed are corrected pages from report of SA \_\_\_\_\_ dated \_\_\_\_\_.

REMARKS:

*Re SAC Letter 60-30 (C) dated 6/21/60.  
Enclosed are copies of Forms FD-122A and FD-128A  
for use in connection with Section A of the  
Reserve Index. Place one copy of each in your  
FBI Form Book.*

Enclosure(s)  
Bufile  
Urfile

*File with memo  
2-16*



Date August 4, 1960

2778  
(ENCL.)

TO SAC:

- Albany
- Albuquerque
- Anchorage
- Atlanta
- Baltimore
- Birmingham
- Boston
- Buffalo
- Butte
- Charlotte
- Chicago
- Cincinnati
- Cleveland
- Dallas
- Denver
- Detroit
- El Paso

(Copies to Offices Checked)

- Honolulu
- Houston
- Indianapolis
- Jacksonville
- Kansas City
- Knoxville
- Little Rock
- Los Angeles
- Louisville
- Memphis
- Miami
- Milwaukee
- Minneapolis
- Mobile
- Newark
- New Haven
- New Orleans
- New York City
- Norfolk
- Oklahoma City
- Omaha
- Philadelphia
- Phoenix
- Pittsburgh
- Portland
- Richmond
- St. Louis
- Salt Lake City
- San Antonio
- San Diego
- San Francisco
- San Juan

- Savannah
- Seattle
- Springfield
- Tampa
- Washington Field
- Quantico

TO LEGAT:

- Bonn
- Havana
- London
- Madrid
- Mexico D. F.
- Ottawa
- Paris
- Rome
- Rio de Janeiro
- Tokyo

RE: SECURITY INVESTIGATIONS OF INDIVIDUALS  
FBI FORM BOOK

- For information
- For appropriate action
- Surep, by \_\_\_\_\_
- The enclosed is for your information. If used in a future report,  conceal all sources,  paraphrase contents.
- Enclosed are corrected pages from report of SA \_\_\_\_\_ dated \_\_\_\_\_.

REMARKS:

Enclosed is a supply of Form FD-128 (revised 6-28-60). Place one copy in FBI Form Book. Destroy all copies of old form FD-128 presently in stock.

*Handwritten note:*  
This copy is for file in Puerto Rico  
RC

Enclosures:  
Bufile  
Urfile

Date July 20, 1960

TO SAC:

(Copies to Offices Checked)

- Albany
- Albuquerque
- Anchorage
- Atlanta
- Baltimore
- Birmingham
- Boston
- Buffalo
- Butte
- Charlotte
- Chicago
- Cincinnati
- Cleveland
- Dallas
- Denver
- Detroit
- El Paso

- Honolulu
- Houston
- Indianapolis
- Jacksonville
- Kansas City
- Knoxville
- Little Rock
- Los Angeles
- Louisville
- Memphis
- Miami
- Milwaukee
- Minneapolis
- Mobile
- Newark
- New Haven

- New Orleans
- New York City
- Norfolk
- Oklahoma City
- Omaha
- Philadelphia
- Phoenix
- Pittsburgh
- Portland
- Richmond
- St. Louis
- Salt Lake City
- San Antonio
- San Diego
- San Francisco
- San Juan

- Savannah
- Seattle
- Springfield
- Tampa
- Washington Field
- Quantico

TO LEGAT:

- Bonn
- Havana
- London
- Madrid
- Mexico D. F.
- Ottawa
- Paris
- Rome
- Rio de Janeiro
- Tokyo

RE: SECURITY INVESTIGATIONS OF INDIVIDUALS  
FBI FORM BOOK

- For information
- For appropriate action
- Surep, by \_\_\_\_\_
- The enclosed is for your information. If used in a future report,  conceal all sources,  paraphrase contents.
- Enclosed are corrected pages from report of SA \_\_\_\_\_ dated \_\_\_\_\_

REMARKS: Enclosed is a supply of Forms FD-128 (revised 6-28-60). Place one copy in FBI Form Book. Destroy all copies of old Forms FD-128 presently in stock.

*File with Bureau*

Enclosure(s)  
Bufile  
Urfile

*1-46*



## Memorandum

TO : Director, FBI

DATE: 8/2/50

FROM : SAC, New York

SUBJECT: SECURITY INDEX.

Rebulet 7/22/50.

The Security Index in the NYO has been checked against list furnished by the Bureau and any differences have been noted thereon.



# Memorandum

TO :

DATE: August 1, 1960

FROM :

SUBJECT: ~~RESERVE INDEX~~

✓ Sec. 171, 172, 173, 174, 175, 176, 177, 178, 179, 180, 181, 182, 183, 184, 185, 186, 187, 188, 189, 190, 191, 192, 193, 194, 195, 196, 197, 198, 199, 200, 201, 202, 203, 204, 205, 206, 207, 208, 209, 210, 211, 212, 213, 214, 215, 216, 217, 218, 219, 220, 221, 222, 223, 224, 225, 226, 227, 228, 229, 230, 231, 232, 233, 234, 235, 236, 237, 238, 239, 240, 241, 242, 243, 244, 245, 246, 247, 248, 249, 250, 251, 252, 253, 254, 255, 256, 257, 258, 259, 260, 261, 262, 263, 264, 265, 266, 267, 268, 269, 270, 271, 272, 273, 274, 275, 276, 277, 278, 279, 280, 281, 282, 283, 284, 285, 286, 287, 288, 289, 290, 291, 292, 293, 294, 295, 296, 297, 298, 299, 300, 301, 302, 303, 304, 305, 306, 307, 308, 309, 310, 311, 312, 313, 314, 315, 316, 317, 318, 319, 320, 321, 322, 323, 324, 325, 326, 327, 328, 329, 330, 331, 332, 333, 334, 335, 336, 337, 338, 339, 340, 341, 342, 343, 344, 345, 346, 347, 348, 349, 350, 351, 352, 353, 354, 355, 356, 357, 358, 359, 360, 361, 362, 363, 364, 365, 366, 367, 368, 369, 370, 371, 372, 373, 374, 375, 376, 377, 378, 379, 380, 381, 382, 383, 384, 385, 386, 387, 388, 389, 390, 391, 392, 393, 394, 395, 396, 397, 398, 399, 400, 401, 402, 403, 404, 405, 406, 407, 408, 409, 410, 411, 412, 413, 414, 415, 416, 417, 418, 419, 420, 421, 422, 423, 424, 425, 426, 427, 428, 429, 430, 431, 432, 433, 434, 435, 436, 437, 438, 439, 440, 441, 442, 443, 444, 445, 446, 447, 448, 449, 450, 451, 452, 453, 454, 455, 456, 457, 458, 459, 460, 461, 462, 463, 464, 465, 466, 467, 468, 469, 470, 471, 472, 473, 474, 475, 476, 477, 478, 479, 480, 481, 482, 483, 484, 485, 486, 487, 488, 489, 490, 491, 492, 493, 494, 495, 496, 497, 498, 499, 500, 501, 502, 503, 504, 505, 506, 507, 508, 509, 510, 511, 512, 513, 514, 515, 516, 517, 518, 519, 520, 521, 522, 523, 524, 525, 526, 527, 528, 529, 530, 531, 532, 533, 534, 535, 536, 537, 538, 539, 540, 541, 542, 543, 544, 545, 546, 547, 548, 549, 550, 551, 552, 553, 554, 555, 556, 557, 558, 559, 560, 561, 562, 563, 564, 565, 566, 567, 568, 569, 570, 571, 572, 573, 574, 575, 576, 577, 578, 579, 580, 581, 582, 583, 584, 585, 586, 587, 588, 589, 590, 591, 592, 593, 594, 595, 596, 597, 598, 599, 600, 601, 602, 603, 604, 605, 606, 607, 608, 609, 610, 611, 612, 613, 614, 615, 616, 617, 618, 619, 620, 621, 622, 623, 624, 625, 626, 627, 628, 629, 630, 631, 632, 633, 634, 635, 636, 637, 638, 639, 640, 641, 642, 643, 644, 645, 646, 647, 648, 649, 650, 651, 652, 653, 654, 655, 656, 657, 658, 659, 660, 661, 662, 663, 664, 665, 666, 667, 668, 669, 670, 671, 672, 673, 674, 675, 676, 677, 678, 679, 680, 681, 682, 683, 684, 685, 686, 687, 688, 689, 690, 691, 692, 693, 694, 695, 696, 697, 698, 699, 700, 701, 702, 703, 704, 705, 706, 707, 708, 709, 710, 711, 712, 713, 714, 715, 716, 717, 718, 719, 720, 721, 722, 723, 724, 725, 726, 727, 728, 729, 730, 731, 732, 733, 734, 735, 736, 737, 738, 739, 740, 741, 742, 743, 744, 745, 746, 747, 748, 749, 750, 751, 752, 753, 754, 755, 756, 757, 758, 759, 760, 761, 762, 763, 764, 765, 766, 767, 768, 769, 770, 771, 772, 773, 774, 775, 776, 777, 778, 779, 780, 781, 782, 783, 784, 785, 786, 787, 788, 789, 790, 791, 792, 793, 794, 795, 796, 797, 798, 799, 800, 801, 802, 803, 804, 805, 806, 807, 808, 809, 810, 811, 812, 813, 814, 815, 816, 817, 818, 819, 820, 821, 822, 823, 824, 825, 826, 827, 828, 829, 830, 831, 832, 833, 834, 835, 836, 837, 838, 839, 840, 841, 842, 843, 844, 845, 846, 847, 848, 849, 850, 851, 852, 853, 854, 855, 856, 857, 858, 859, 860, 861, 862, 863, 864, 865, 866, 867, 868, 869, 870, 871, 872, 873, 874, 875, 876, 877, 878, 879, 880, 881, 882, 883, 884, 885, 886, 887, 888, 889, 890, 891, 892, 893, 894, 895, 896, 897, 898, 899, 900, 901, 902, 903, 904, 905, 906, 907, 908, 909, 910, 911, 912, 913, 914, 915, 916, 917, 918, 919, 920, 921, 922, 923, 924, 925, 926, 927, 928, 929, 930, 931, 932, 933, 934, 935, 936, 937, 938, 939, 940, 941, 942, 943, 944, 945, 946, 947, 948, 949, 950, 951, 952, 953, 954, 955, 956, 957, 958, 959, 960, 961, 962, 963, 964, 965, 966, 967, 968, 969, 970, 971, 972, 973, 974, 975, 976, 977, 978, 979, 980, 981, 982, 983, 984, 985, 986, 987, 988, 989, 990, 991, 992, 993, 994, 995, 996, 997, 998, 999, 1000

In October, 1951, a field recommendation that case files on subjects whose names were included in the then Communist Index (CI) be stamped with the letters "CI" was approved. Stated advantages were: (1) File clerks looking for files could immediately spot those files relating to CI cards and (2) When an incoming document attached to the file arrived at the desk of a security supervisor for action in the field, he was immediately put on notice that the subject thereof was the subject of a CI card, if such was the case, thus saving the necessity of looking through the entire file.

When the revised CI was established in October, 1956, it was suggested by the field and adopted that the case files on subjects of revised CI cards be stamped "RCI." We have now established out of the old CI the "Reserve Index," consisting of Sections A and B. Chicago proposes to stamp the case files of those individuals whose names are included in the Reserve Index with the letters "RI-A" (Section A cards) or "RI-B" (Section B cards), DAGE.

OBSERVATIONS:

Under the old CI program the field was under instructions to expend no administrative efforts to purge the Index, thus when a case file was stamped "CI" there was no necessity for subsequent changes unless, of course, the subject's name was added to the Security Index. Under the revised CI program and following the complete review of the CI the field was under instructions to remove cards from this Index only when an individual's name was returned to the Security Index or when he became a security informant. Thus, little administrative effort was needed to change the stamps on the file back.

Under the Reserve Index the field will be reviewing annually all cases of individuals failing within Section A. Numerous changes could result therefrom. It is possible that the additional effort

Enclosure

- 1 - Training and Inspection
- 1 -
- 1 -
- 1 -

AUG 8 1960

AUG 10 1960



2700

Memo to  
RE: RESERVE INDEX

that would be required to keep these file backs properly stamped under the Reserve Index program would not be justified. Item two of the reasoning for the use of stamps "CI" and "PCI," mentioned previously, is no longer applicable as circumstances in each case may change, thus necessitating a file review in each instance.

RECOMMENDATION:

(1) That the Training and Inspection Division, during the course of a representative number of field inspections, determine whether continued stamping of these case files is justified and, thereafter, submit its recommendations with respect thereto.

(2) That Chicago be instructed to hold in abeyance the stamping of these case files pending receipt of the observations of the Training and Inspection Division.

UNITED STATES GOVERNMENT

*Memorandum*

2781

TO :

DATE: August 5, 1960

FROM :

SUBJECT: SECURITY INDEX

During the past week, 3 cards were added to the Security Index and 17 cards were cancelled, a net decrease of 14 cards.

The Security Index count as of today is 12,260.

ACTION:

None. For your information.

UNITED STATES GOVERNMENT

## Memorandum

DATE: July 29, 1960

TO :

FROM :

SUBJECT: SECURITY INDEX

During the past week, 9 cards were added to the Security Index and 24 cards were canceled, a net decrease of 15 cards.

The Security Index count as of today is 12,874.

ACTION:

None. For your information.



UNITED STATES GOVERNMENT

*Memorandum*

TO :

DATE: August 9, 1960

FROM :

SUBJECT: DELINQUENCY IN SECURITY INVESTIGATIONS

SUMMARY:

Each month we follow the field closely on the status of security work by analyzing the backlog of pending cases and delinquency in espionage, internal security, security matter and foreign intelligence cases in classifications 95, 100 and 105. Status of these cases as of July 31, 1960, is set forth below.

In July, there was an increase in pending active matters in the entire field in the security classifications from 17,229 to 18,268. Delinquent matters increased from 1,323 to 1,652. The percentage of delinquent matters increased from 7.7% to 9%.

Letters are being sent to the offices indicated by asterisks on page four herein, commenting on their delinquency and pointing out the necessity of bringing their security cases to a current status.

RECOMMENDATION:

The field will continue to be followed closely regarding security delinquency and you will be advised of the results of the review of the August, 1960, administrative reports.

Memorandum for  
RE: C. M. HENNINGSON, L. PRIORITY INVESTIGATIONS

DETAILS:

The July, 1960, administrative reports from all offices indicate that the total pending active matters in classifications 65, 100 and 105 increased from 27,222 to 27,838. Delinquent items increased from 1,333 to 1,652. The percentage of delinquent items increased from 7.7% to 9%.

The following statistics show the status of pending work, including both pending active and pending inactive matters, and delinquency for all field divisions for the last four months.

TOTAL PENDING MATTERS  
CLASSIFICATIONS 65, 100 AND 105  
ALL FIELD DIVISIONS

| Classification | 4/30/60      | 5/31/60      | 6/30/60      | 7/21/60      |
|----------------|--------------|--------------|--------------|--------------|
| 65             | 510          | 504          | 537          | 566          |
| 100            | 10,127       | 10,095       | 11,235       | 12,396       |
| 105            | <u>7,276</u> | <u>7,201</u> | <u>7,660</u> | <u>7,514</u> |
| Total          | 17,913       | 17,800       | 19,432       | 20,478       |

TOTAL DELINQUENT MATTERS  
CLASSIFICATIONS 65, 100 AND 105  
ALL FIELD DIVISIONS

| Classification | 4/30/60    | 5/31/60    | 6/30/60    | 7/31/60    |
|----------------|------------|------------|------------|------------|
| 65             | 21         | 15         | 13         | 17         |
| 100            | 866        | 795        | 783        | 1,032      |
| 105            | <u>558</u> | <u>498</u> | <u>527</u> | <u>603</u> |
| Total          | 1,445      | 1,308      | 1,323      | 1,652      |



MEMORANDUM FOR  
 RE: DELINQUENCY IN SECURITY INVESTIGATIONS

The following statistics show the total of pending active matters, delinquency in total matters in all offices during the past six months.

CLASSIFICATIONS 65, 100 and 105  
ALL OFFICES

| <u>Date</u> | <u>Pending Active Matters</u> | <u>Delinquent Matters</u> | <u>Percentage Delinquent</u> |
|-------------|-------------------------------|---------------------------|------------------------------|
| 2/29/60     | 15,054                        | 1,511                     | 9.5%                         |
| 3/31/60     | 16,107                        | 1,100                     | 7.2%                         |
| 4/30/60     | 15,616                        | 1,445                     | 9.2%                         |
| 5/31/60     | 15,598                        | 1,308                     | 8.7%                         |
| 6/30/60     | 17,209                        | 1,323                     | 7.7%                         |
| 7/31/60     | 18,253                        | 1,632                     | 9%                           |

Status of Delinquency by Individual Office

Each office is listed according to the percentage of delinquency on July 31, 1960, in total matters in classifications 65, 100 and 105. These statistics show the progress during July, 1960.

Memorandum for  
RE: EFFICIENCY IN SECURITY INVESTIGATIONS

| Office        | Positive Matches |         | Percentage Delinquent |         |
|---------------|------------------|---------|-----------------------|---------|
|               | 6/30/59          | 7/31/60 | 6/30/59               | 7/31/60 |
| *Little Rock  | 9                | 12      | 0%                    | 25%     |
| *Memphis      | 27               | 29      | 0%                    | 20.7%   |
| *New Orleans  | 70               | 69      | 7.1%                  | 17.4%   |
| *Dallas       | 61               | 53      | 8.2%                  | 13.2%   |
| *Chicago      | 1033             | 1095    | 9.1%                  | 14.5%   |
| *Pittsburgh   | 237              | 233     | 4.2%                  | 14.1%   |
| *Detroit      | 779              | 746     | 10.3%                 | 12.7%   |
| *Buffalo      | 313              | 299     | 13.1%                 | 13%     |
| Minneapolis   | 228              | 205     | 9.6%                  | 12.6%   |
| Cincinnati    | 108              | 122     | 5%                    | 12.3%   |
| Albany        | 174              | 173     | 9.2%                  | 12.1%   |
| Norfolk       | 39               | 27      | 3.3%                  | 11.1%   |
| St. Louis     | 131              | 127     | 9.2%                  | 11%     |
| Baltimore     | 375              | 395     | 11.7%                 | 10.9%   |
| San Francisco | 1324             | 1363    | 7.1%                  | 10.4%   |
| New York      | 4208             | 4054    | 9.5%                  | 10%     |
| Seattle       | 333              | 322     | 6.3%                  | 9.9%    |
| Newark        | 677              | 704     | 6.4%                  | 9.8%    |
| Denver        | 75               | 87      | 14.7%                 | 9.2%    |
| Miami         | 309              | 355     | 12%                   | 9%      |
| Los Angeles   | 1754             | 1844    | 8.6%                  | 8.9%    |
| Cleveland     | 491              | 493     | 7.5%                  | 8.4%    |
| New Haven     | 241              | 294     | 6.2%                  | 8.3%    |
| Philadelphia  | 616              | 703     | 5.5%                  | 7.9%    |
| Charlotte     | 59               | 52      | 2%                    | 7.7%    |
| Springfield   | 32               | 72      | 1.6%                  | 6.9%    |
| Kansas City   | 31               | 77      | 2.3%                  | 6.5%    |
| Milwaukee     | 151              | 156     | 4.6%                  | 6.4%    |
| Boston        | 391              | 355     | 5.1%                  | 6.1%    |
| Indianapolis  | 175              | 170     | 3.9%                  | 5.7%    |
| Phoenix       | 55               | 52      | 23.6%                 | 5.8%    |
| San Diego     | 127              | 125     | 4.3%                  | 5.6%    |
| Richmond      | 29               | 38      | 5%                    | 5.3%    |
| Atlanta       | 146              | 139     | 15.8%                 | 5%      |
| Oklahoma City | 32               | 42      | 0%                    | 5%      |

\*Letter being sent re delinquent status



Memorandum for  
 RE: DELINQUENCY IN SECURITY INVESTIGATIONS

| Office           | Active Matters |         | Percentage Delinquent |         |
|------------------|----------------|---------|-----------------------|---------|
|                  | 6/30/60        | 7/31/60 | 6/30/60               | 7/31/60 |
| Salt Lake City   | 49             | 61      | 4.1%                  | 4.9%    |
| Jacksonville     | 46             | 60      | 6.5%                  | 3.3%    |
| Savannah         | 28             | 32      | 3.6%                  | 3.1%    |
| Birmingham       | 38             | 38      | 0%                    | 2.6%    |
| Omaha            | 90             | 93      | 2.2%                  | 2%      |
| Portland         | 118            | 119     | 4.2%                  | 1.7%    |
| Washington Field | 1198           | 1153    | 1.3%                  | 1.5%    |
| Albuquerque      | 28             | 36      | 0%                    | 0%      |
| Anchorage        | 23             | 33      | 8.7%                  | 0%      |
| Butte            | 33             | 29      | 0%                    | 0%      |
| El Paso          | 26             | 27      | 7.7%                  | 0%      |
| Honolulu         | 32             | 28      | 0%                    | 0%      |
| Houston          | 51             | 40      | 7.8%                  | 0%      |
| Knoxville        | 22             | 18      | 0%                    | 0%      |
| Louisville       | 30             | 20      | 7.1%                  | 0%      |
| Mobile           | 62             | 52      | 0%                    | 0%      |
| San Antonio      | 29             | 34      | 0%                    | 0%      |
| San Juan         | 194            | 262     | 2.1%                  | 0%      |
| Tampa            | 71             | 136     | 4.2%                  | 0%      |



# Memorandum

DATE: June 22, 1960

TO :

FROM :

SUBJECT :

The change in the name of the FBI Reserve Index to the present "Reserve Index" necessitates a change in Form FD-128, a form utilized by the field in the transfer of Reserve Index cards in the case of subjects of security investigations. The change necessitated is merely the deletion of a reference to the fact that the individual was the subject of a Reserve Index card.

There is attached a Form FD-128 reflecting the proposed change. It is unnecessary to indicate on this form that an individual is the subject of a Reserve Index card as a special form for the handling of transfers of such subjects has been approved.

We presently have in stock only 100,000 copies of Form FD-128 (2,450 thin whites and 850 thin yellows as of today). The form is scheduled for reprinting in the immediate future. Since the total cost of the Forms FD-128 presently in stock barely exceed \$4, it is recommended that the present stock be destroyed and that the proposed revised form (copy attached) be printed immediately.

RECOMMENDATION:

That this memorandum and the attached be referred to the Training and Inspection Division for appropriate attention.

Enclosure

- 1 - Training and Inspection
- 1 -
- 1 -
- 1 -

ADDENDUM: 6/29/60

Training and Inspection Division concurs with Bureau Intelligence Division recommendation. Approval is requested for revision of FD-128. "Letter Change of Field of Office in New Cases." Its immediate printing and distribution.







2787  
(ENCL.)

Routing Slip  
0-7 (Rev. 6-1-60)

Date August 4, 1960

TO SAC:

(Copies to Offices Checked)

- |                                      |                                       |   |   |
|--------------------------------------|---------------------------------------|---|---|
| <input type="checkbox"/> Albany      | <input type="checkbox"/> Honolulu     | <input type="checkbox"/> New Orleans    | <input type="checkbox"/> Savannah         |
| <input type="checkbox"/> Albuquerque | <input type="checkbox"/> Houston      | <input type="checkbox"/> New York City  | <input type="checkbox"/> Seattle          |
| <input type="checkbox"/> Anchorage   | <input type="checkbox"/> Indianapolis | <input type="checkbox"/> Norfolk        | <input type="checkbox"/> Springfield      |
| <input type="checkbox"/> Atlanta     | <input type="checkbox"/> Jacksonville | <input type="checkbox"/> Oklahoma City  | <input type="checkbox"/> Tampa            |
| <input type="checkbox"/> Baltimore   | <input type="checkbox"/> Kansas City  | <input type="checkbox"/> Omaha          | <input type="checkbox"/> Washington Field |
| <input type="checkbox"/> Birmingham  | <input type="checkbox"/> Knoxville    | <input type="checkbox"/> Philadelphia   | <input type="checkbox"/> Quantico         |
| <input type="checkbox"/> Boston      | <input type="checkbox"/> Little Rock  | <input type="checkbox"/> Phoenix        |   |
| <input type="checkbox"/> Buffalo     | <input type="checkbox"/> Los Angeles  | <input type="checkbox"/> Pittsburgh     |   |
| <input type="checkbox"/> Butte       | <input type="checkbox"/> Louisville   | <input type="checkbox"/> Portland       |   |
| <input type="checkbox"/> Charlotte   | <input type="checkbox"/> Memphis      | <input type="checkbox"/> Richmond       |   |
| <input type="checkbox"/> Chicago     | <input type="checkbox"/> Miami        | <input type="checkbox"/> St. Louis      |   |
| <input type="checkbox"/> Cincinnati  | <input type="checkbox"/> Milwaukee    | <input type="checkbox"/> Salt Lake City |   |
| <input type="checkbox"/> Cleveland   | <input type="checkbox"/> Minneapolis  | <input type="checkbox"/> San Antonio    |   |
| <input type="checkbox"/> Dallas      | <input type="checkbox"/> Mobile       | <input type="checkbox"/> San Diego      |   |
| <input type="checkbox"/> Denver      | <input type="checkbox"/> Newark       | <input type="checkbox"/> San Francisco  |   |
| <input type="checkbox"/> Detroit     | <input type="checkbox"/> New Haven    | <input type="checkbox"/> San Juan       |   |
| <input type="checkbox"/> El Paso     |                                       |   |   |

TO LEGAT:

- Bonn
- Havana
- London
- Madrid
- Mexico D. F.
- Ottawa
- Paris
- Rome
- Rio de Janeiro
- Tokyo

RE: SECURITY INVESTIGATIONS OF INDIVIDUALS  
FBI FORM BOOK

- For information       For appropriate action       Surep, by \_\_\_\_\_
- The enclosed is for your information. If used in a future report,  conceal all sources,  paraphrase contents.
- Enclosed are corrected pages from report of SA \_\_\_\_\_ dated \_\_\_\_\_.

REMARKS:

Enclosed is a supply of Form FD-128 (revised 6-21-60). Place one copy in FBI Form Book. Destroy all copies of old form FD-128 presently in stock.

Enclosure(s)  
Bufile  
Urfile



UNITED STATES GOVERNMENT

Memorandum

DATE: August 12, 1960

TO :

FROM :

SUBJECT :

The following is a report on the status of the Security Index since the last count was furnished to you on July 6, 1960:

| <u>Period</u> | <u>New Cards</u><br><u>Added</u> | <u>Cards</u><br><u>Cancelled</u> | <u>Net</u><br><u>Change</u> |
|---------------|----------------------------------|----------------------------------|-----------------------------|
| July 11-15    | 25                               | 27                               | - 5                         |
| July 18-22    | 14                               | 27                               | -13                         |
| July 25-29    | 9                                | 24                               | -15                         |
| August 1-5    | 3                                | 17                               | -14                         |
| August 8-12   | 8                                | 20                               | -12                         |
| <u>Total</u>  | 57                               | 115                              | -52                         |

During the above-mentioned period, there was a net decrease in the Security Index of 52.

For your information, during the preceding four-week period, 48 cards were added to the Security Index and 60 cards were cancelled, resulting in a net decrease of 12.

The Security Index count as of today is 12,848.

This is for your information.



[redacted]

[redacted]

There is a special list to a current list of  
names. All are included in the main portion of the list  
[redacted]  
in detail.

unless contrary.

[redacted]

[redacted]

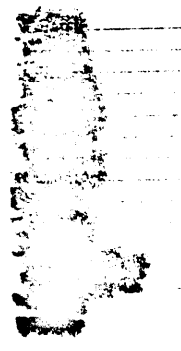
NOTE: Classified as pertains to Security Index, part  
of [redacted] of [redacted]  
Espionage Section of Special Section not included. Four  
designated groups are:

- U. S. Government Employees
- Foreign Government Employees
- United Nations Employees
- Pro-Soviet Yugoslavs

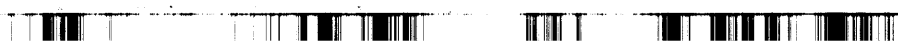
100-100000  
[redacted]

TARshaw  
(5)

[redacted]



[redacted] [redacted]



## Memorandum

DATE: August 19, 1960

TO :

FROM :

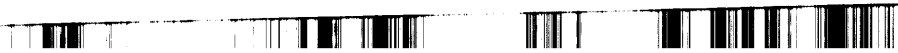
SUBJECT: <sup>0</sup> SECURITY INDEX

During the past week, 10 cards were added to the Security Index, 34 cards cancelled, a net increase of 24 cards.

The Security Index count as of today is 12,225.

ACTION:

None. For your information.



Memorandum

DATE: 2/11/69

TO :

FROM :

SUBJECT: SECURITY INDEX CARD STATISTICS

There are 10,244 persons represented in the Security Index (as of August 15, 1968). Of the total, 10,123 or 98.2 percent are communists.

A detailed table, enclosed in duplicate, shows as of August 15, 1968, the distribution of the subjects by field office, nationalistic tendencies, dangerousness, sex, race, citizenship, and "special lists." A key to abbreviations is enclosed.

Enclosures





KEY TO ABBREVIATIONS USED IN SECURITY INDEX

AL Alien  
DC Detcom  
KF Key Figure  
NA Naturalized  
  
NB Native Born  
TF Top Functionary  
UN Unknown  
AEP Atomic Energy Program Employees  
  
COM Communist Party, USA  
ESP Espionage Subjects  
FGE Foreign Government Employees  
  
GOV United States Government Employees  
ISL Independent Socialist League  
JFG Johnson Forest Group  
  
NOI Nation of Islam  
MIS Miscellaneous  
NPR Nationalistic Party of Puerto Rico  
PPA Proletarian Party of America  
  
RUS Russian  
ASC American Socialist Clubs  
SWP Socialist Workers' Party  
UNE United Nations Employees  
  
UPR Union of the People for the Establishment  
of the Republic of Puerto Rico  
YUG Yugoslavian

ENCLOSURE



# Memorandum

TO : Mr. [redacted]

DATE: August 11, 1960

FROM : Mr. [redacted]

SUBJECT: [redacted]

Enclosed herewith is one copy each of the reports listed for transmittal to the SAC, Quantico. You should work with [redacted] to maintain [redacted]

- 1) Alphabetical list of Security Index (SI) subjects.
- 2) Geographical list of SI subjects.
- 3) Spanish Edition of the SI.
- 4) List of SI subjects and top functionaries.
- 5) List of SI subjects out of the country.
- 6) List of missing SI subjects.
- 7) List of subjects whose citizenship status is unknown.
- 8) List of aliens.
- 9) List of SI subjects of Chinese descent.
- 10) List of SI subjects sympathetic to communist China.

The FBI [redacted] July, 1960. When this action has been taken, he should be notified via memorandum and return it to the Subversive Control Section.

ACTION:

PER [redacted]

If you approve, this memorandum and the attachments will be forwarded to Quantico for the above action.

Enclosure  
100-358886

1 - SAC, Quantico  
1 - Mr. [redacted]

TBR/bcm  
(3)



UNITED STATES GOVERNMENT

# Memorandum

DATE: August 10, 1960

TO :

FROM :

SUBJECT: SECURITY INDEX

During the past week, 6 cards were added to the Security Index and 17 cards were cancelled, net addition of 10 cards.

The Security Index count as of 8/10/60 is 12,415.

ACTION:

None. For your information.



UNITED STATES GOVERNMENT

*Memorandum*

TO :

DATE: September 2, 1969

FROM :

SUBJECT: SECURITY INDEX

During the past week, 12 cards were added to the Security Index and 27 cards were cancelled, a net decrease of 15 cards.

The Security Index count as of today is 12,200.

ACTION:

None. For your information.

## Memorandum

TO : DIRECTOR, FBI (66-3002)  
 Also: Home Management Desk  
 Training and Information Division

FROM : SAC, BOSTON (66-103)

SUBJECT: PROPOSED FORM  
 (Reserve Index)

DATE: 6/22/66

Enclosed are the original and two copies of a proposed form for use in opening and assigning cases under the Bureau's Reserve Index Program.

The use of this form will facilitate the administrative functions of this office.

Bureau authority is therefore requested to utilize the enclosed form.

2-Bureau (Enc. 3)  
 1-Boston  
 RHB:en  
 (3)

ADDENDUM:

Domestic Intelligence Division

6/26/66

Form is assigned for opening and assigning Reserve Index cases and furnishing instructions for handling same in accordance with SAC Letter 66-30 dated 6/21/66. Form supersedes Form 23-12 which was used for opening, assigning, and furnishing instructions on Communist Index cases. Communist Index now changed to Reserve Index and different set of instructions for handling apply to Reserve Index cases. It is believed proposed form will facilitate administration of Reserve Index cases in Boston.

# Memorandum

TO :

FROM : SAC, BOSTON (100-

SUBJECT:

DATE:

## RESERVE INDEX

The Bureau on 6/21/60 advised the following concerning the Communist Index (CI). In the future the CI will be known as the Reserve Index. The following instructions were received:

Institute a review of the Reserve Index. In conducting this review, the following minimum steps are to be taken in all instances:

1. Verify residence and employment.
2. Conduct an indices search and file review to determine whether investigation is warranted at this time or whether an interview with the individual is deemed desirable. Interviews with the individuals will be handled in accordance with current Bureau instructions set forth in Section 677 of the Manual of Instructions.
3. If additional investigation is conducted or if there is unreported information of a subversive nature contained in the files, a report must be submitted.

This Reserve Index is being divided into two sections, Section A and Section B. Each is discussed separately herein.

Section A of the Reserve Index should include those individuals who, in a time of national emergency, are in a position to influence others against the national interest or are likely to furnish material financial aid to subversive elements due to their subversive associations and ideology. Included in the Section A will be those individuals falling within the following categories:



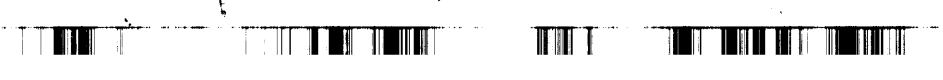
1. Professors, teachers and educators.
2. Labor union organizers or leaders.
3. Writers, lecturers, newsmen, entertainers and others in the mass media fields.
4. Lawyers, doctors and scientists.
5. Other potentially influential persons on a local or national level.
6. Individuals who could potentially furnish material financial aid.

During the course of the re-examination of the Reserve Index, those individuals falling within the above criteria for inclusion in Section A should be selected therefrom, handled in accordance with the above instructions and, thereafter, nominated for inclusion in Section A of the Reserve Index. Appropriate forms are available. Attached to the form recommending the inclusion of the individual's name in Section A of the Reserve Index should be a succinct summary setting forth the basis for your recommendation. If no further investigation is warranted in the case at this time or if no report is accompanying the recommendation, a statement to that effect should appear on the page containing the succinct summary.

Investigations of individuals listed in Section A of the Reserve Index are to be brought up to date annually, and they are to be considered for Security Index status or retention in the Reserve Index. As a minimum, the previously mentioned investigative steps will be taken, including the submission of reports in the event additional subversive data is developed. Changes in residence and/or employment should be submitted to the Bureau on forms to be furnished the field in the immediate future.

SECTION B

Section B, containing the names of the remaining individuals included in the Reserve Index, will be maintained in the field in the same manner in which the Communist Index is now being maintained.





(E.M.L.)

Upon the deletion of a subject's name from the Security Index based upon the application of the Security Index criteria, it will be necessary to consider whether his name should then be placed in Section A of the Reserve Index. If his name should so be included, submit an appropriate recommendation. If the facts do not justify the inclusion of his name in Section A, the canceled Security Index card should be filed in Section B in accordance with current practice.

Standards for Inclusion of Names in the Reserve Index

1. Membership in a basic revolutionary organization subsequent to January 1, 1949, together with some indication of sympathy or association with such an organization or a subversive front organization subsequent to the reported membership and no reliable evidence of defection.
2. Investigation has failed to substantiate allegations of membership in a revolutionary organization within the past five years, coupled with some evidence or information indicating activity, association or sympathy for the subversive cause within the same period, and no reliable evidence of defection.
3. The individual, within the past five years, by his associations, writings, financial support or conduct in relation to and support of subversive organizations or the international communist movement is in a position to influence others at the time of a national emergency and no reliable evidence of defection.
4. Leadership or substantial activities in a major subversive front group over three years ago, together with some evidence of continuing activity, association or sympathy for the subversive cause within three years and no reliable evidence of defection.
5. Membership in a subversive front organization within the past three years and no reliable evidence of defection.

Additional individuals whose names should be included in the Reserve Index under the revised standards should be added as the cases come to the attention of Agents handling security work.

Leads must be covered within two weeks by Resident Agents.

MEMORANDUM

FOR THE RECORD

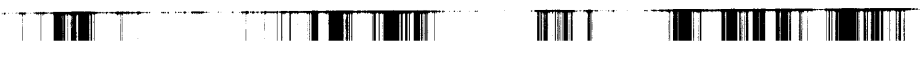
SUBJECT: [Illegible]

DATE: [Illegible]

[Illegible typed text]

(continued)

REF: [Illegible]  
 [Illegible]  
 SAC Letter [Illegible] 4/11/58 advised the [Illegible] of  
 [Illegible]



# Memorandum

DATE: September 9, 1960

TO :

FROM :

SUBJECT: SECURITY INDEX

The following is a report on the status of the Security Index since the last count was furnished to you on August 12, 1960:

| Week of:                | New Cards Added | Cards Cancelled | Net Change |
|-------------------------|-----------------|-----------------|------------|
| August 15-19            | 10              | 34              | -24        |
| August 22-26            | 9               | 19              | -10        |
| August 29 - September 2 | 12              | 27              | -15        |
| September 6-9           | 10              | 20              | -10        |
| <b>Total</b>            | <b>41</b>       | <b>100</b>      | <b>-59</b> |

During the above-mentioned period, there was a net decrease in the Security Index of 57.

For your information, during the preceding five-week period, 57 cards were added to the Security Index and 115 cards were canceled, resulting in a net decrease of 58.

The Security Index count as of today is 12,190.

**ACTION:**

This is for your information.



## Memorandum

3795

DATE: 9/9/60

TO :

FROM :

SUBJECT: ~~SECURITY INVESTIGATIONS OF INDIVIDUALS -~~  
~~RESERVE INDEX~~

We presently disseminate to the Department copies of reports in all Security Index (SI) cases and copies of reports in other than SI cases in those instances in which it appears that information contained therein would be of interest to the Department.

In connection with the Reserve Index (RI) review presently in progress, we are beginning to receive reports in those RI cases in which reported information is contained in the files of the field offices or when active investigation is conducted.

We are establishing from the RI, Section A, composed of individuals in public life who are in a position to exert considerable influence in time of emergency and individuals who should receive priority attention following apprehension of SI subjects, including consideration for apprehension and detention.

While the Department is not aware of the existence of this Index, it is believed that investigative reports received on individuals whose names are being included in Section A of the RI should be disseminated to the Department. Should it become necessary to take action following an emergency against this group of individuals, it would be essential that the Department be in possession of investigative reports. The logical method of insuring proper dissemination would be as the reports are received.

RECOMMENDATION:

If you agree, investigative reports on Section A RI subjects will be disseminated to the Department as received.

UNITED STATES GOVERNMENT

## Memorandum

2796

DATE: September 15, 1960

TO :

FROM :

SUBJECT: DELINQUENCY IN SECURITY INVESTIGATIONS

SYNOPSIS:

Each month we follow the field closely on the status of security work by analyzing the backlog of pending cases and delinquency in espionage, internal security, security matter and foreign intelligence cases in classifications 65, 100 and 105. Status of these cases as of August 31, 1960, is set forth below.

In August, there was an increase in pending active matters in the entire field in the security classifications from 18,253 to 19,033. Delinquent matters increased from 1,652 to 1,846. The percentage of delinquent matters increased from 9% to 9.7%.

Letters are being sent to the offices indicated by asterisks on page four herein, commenting on their delinquency and pointing out the necessity of bringing their security cases to a current status.

RECOMMENDATION:

The field will continue to be followed closely regarding security delinquency and you will be advised of the results of the review of the September, 1960, administrative reports.

Memorandum for  
RE: DELINQUENCY IN SECURITY INVESTIGATIONS

DETAILS:

The August, 1969, administrative reports from all offices indicate that the total pending active matters in classifications 65, 100 and 105 increased from 13,253 to 19,033. Delinquent items increased from 1,652 to 1,846. The percentage of delinquent items increased from 9% to 9.7%.

The following statistics show the status of pending work, including both pending active and pending inactive matters, and delinquency for all field divisions for the last four months.

TOTAL PENDING MATTERS  
CLASSIFICATIONS 65, 100 AND 105  
ALL FIELD DIVISIONS

| <u>Classification</u> | <u>5/31/69</u> | <u>6/30/69</u> | <u>7/31/69</u> | <u>8/21/69</u> |
|-----------------------|----------------|----------------|----------------|----------------|
| 65                    | 504            | 537            | 566            | 633            |
| 100                   | 10,095         | 11,235         | 12,396         | 12,674         |
| 105                   | <u>7,201</u>   | <u>7,660</u>   | <u>7,516</u>   | <u>7,844</u>   |
| Total                 | 17,800         | 19,432         | 20,478         | 21,151         |

TOTAL DELINQUENT MATTERS  
CLASSIFICATIONS 65, 100 AND 105  
ALL FIELD DIVISIONS

| <u>Classification</u> | <u>5/31/69</u> | <u>6/30/69</u> | <u>7/31/69</u> | <u>8/31/69</u> |
|-----------------------|----------------|----------------|----------------|----------------|
| 65                    | 15             | 13             | 17             | 11             |
| 100                   | 795            | 783            | 1,032          | 1,328          |
| 105                   | <u>498</u>     | <u>527</u>     | <u>603</u>     | <u>507</u>     |
| Total                 | 1,308          | 1,323          | 1,652          | 1,846          |

Memorandum for  
RE: DELINQUENCY IN SECURITY INVESTIGATIONS

The following statistics show the total of pending active matters, delinquency and percentage of delinquency of all offices during the past six months.

CLASSIFICATIONS 65, 100 AND 105  
ALL FIELD DIVISIONS

| <u>Date</u> | <u>Pending Active Matters</u> | <u>Delinquent Matters</u> | <u>Percentage Delinquent</u> |
|-------------|-------------------------------|---------------------------|------------------------------|
| 3/31/60     | 16,107                        | 1,160                     | 7.2%                         |
| 4/30/60     | 15,646                        | 1,445                     | 9.2%                         |
| 5/31/60     | 15,598                        | 1,308                     | 8.4%                         |
| 6/30/60     | 17,229                        | 1,323                     | 7.7%                         |
| 7/31/60     | 18,258                        | 1,652                     | 9%                           |
| 8/31/60     | 19,033                        | 1,846                     | 9.7%                         |

Status of Security Work by Individual Office

Each office is listed according to the percentage of delinquency on August 31, 1960, in total matters in classifications 65, 100 and 105. These statistics show the progress during August, 1960.



Memorandum for  
 RE: DELINQUENCY IN SECURITY INVESTIGATIONS

| Office         | Active Matters |         | Percentage Delinquent |         |
|----------------|----------------|---------|-----------------------|---------|
|                | 7/31/60        | 8/31/60 | 7/31/60               | 8/31/60 |
| *New York      | 4054           | 4776    | 10%                   | 16.4%   |
| *Albany        | 175            | 185     | 12.1%                 | 14.6%   |
| *Buffalo       | 299            | 277     | 13%                   | 14%     |
| *Jacksonville  | 60             | 60      | 3.3%                  | 13.3%   |
| *St. Louis     | 127            | 126     | 11%                   | 12.7%   |
| *Cincinnati    | 122            | 141     | 12.3%                 | 12.1%   |
| Philadelphia   | 703            | 708     | 7.8%                  | 12%     |
| Chicago        | 1095           | 1168    | 14.5%                 | 11.1%   |
| Cleveland      | 490            | 504     | 8.4%                  | 10.3%   |
| Little Rock    | 12             | 19      | 25%                   | 10.3%   |
| Detroit        | 746            | 793     | 13.4%                 | 10.3%   |
| Memphis        | 29             | 30      | 20.7%                 | 19%     |
| San Francisco  | 1363           | 1324    | 10.4%                 | 9.7%    |
| Albuquerque    | 36             | 33      | 0%                    | 9.1%    |
| Newark         | 766            | 809     | 9.3%                  | 8%      |
| Los Angeles    | 1844           | 1948    | 8.9%                  | 7.8%    |
| Baltimore      | 395            | 454     | 10.9%                 | 7.7%    |
| Knoxville      | 18             | 13      | 0%                    | 7.7%    |
| Milwaukee      | 156            | 157     | 6.4%                  | 7.1%    |
| Louisville     | 20             | 27      | 0%                    | 7.4%    |
| New Haven      | 294            | 339     | 8.2%                  | 7.1%    |
| Mobile         | 52             | 46      | 0%                    | 6.5%    |
| Miami          | 355            | 422     | 9%                    | 6.2%    |
| Seattle        | 382            | 406     | 9.9%                  | 6.2%    |
| Birmingham     | 38             | 35      | 2.6%                  | 5.7%    |
| Minneapolis    | 205            | 245     | 12.6%                 | 5.3%    |
| New Orleans    | 69             | 76      | 17.4%                 | 5.3%    |
| Oklahoma City  | 42             | 35      | 11.4%                 | 5.3%    |
| Indianapolis   | 170            | 233     | 5.9%                  | 5.2%    |
| Charlotte      | 52             | 82      | 7.7%                  | 4.9%    |
| Omaha          | 98             | 66      | 2%                    | 4.3%    |
| Denver         | 87             | 93      | 9.2%                  | 4.3%    |
| Atlanta        | 139            | 168     | 5%                    | 4.2%    |
| Portland       | 119            | 96      | 1.7%                  | 4.2%    |
| San Diego      | 125            | 125     | 5.6%                  | 4%      |
| Boston         | 355            | 392     | 6.2%                  | 3.8%    |
| Pittsburgh     | 206            | 251     | 14.1%                 | 3.6%    |
| Salt Lake City | 61             | 60      | 4.9%                  | 3.3%    |

\*Letter being sent re delinquent status.



Memorandum for  
RE: DELINQUENCY IN SECURITY INVESTIGATIONS

| Office           | Active Matters |         | Percentage Delinquency |         |
|------------------|----------------|---------|------------------------|---------|
|                  | 7/31/68        | 7/31/69 | 7/31/68                | 7/31/69 |
| Springfield      | 72             | 75      | 6.9%                   | 2.7%    |
| Waco             | 29             | 39      | 0%                     | 1.3%    |
| Kansas City      | 77             | 87      | 6.3%                   | 2.3%    |
| Washington Field | 1158           | 1301    | 1.5%                   | 2.3%    |
| Albuquerque      | 136            | 142     | 0%                     | 1.7%    |
| Memphis          | 33             | 33      | 0%                     | 0%      |
| Dallas           | 56             | 61      | 16.1%                  | 0%      |
| El Paso          | 27             | 23      | 0%                     | 0%      |
| Honolulu         | 26             | 23      | 0%                     | 0%      |
| Houston          | 49             | 42      | 0%                     | 0%      |
| Norfolk          | 27             | 36      | 11.1%                  | 0%      |
| Phoenix          | 52             | 55      | 5.8%                   | 0%      |
| Richmond         | 38             | 52      | 5.3%                   | 0%      |
| San Antonio      | 34             | 45      | 0%                     | 0%      |
| San Juan         | 262            | 262     | 0%                     | 0%      |
| Savannah         | 32             | 30      | 3.1%                   | 0%      |

Memorandum

TO :

DATE: September 16, 1960

FROM :

SUBJECT: SECURITY INDEX

During the past week, 9 cards were added to the Security Index and 32 cards were cancelled, a net decrease of 23 cards.

The Security Index count as of today is 12,167.

ACTION:

None. For your information.



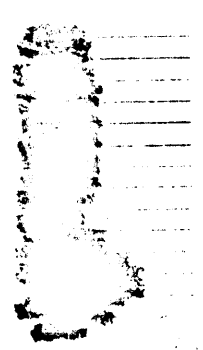
~~CONFIDENTIAL~~

It is requested that you list to give

NOTE: Classified as pertains to the title of "Top Secret" except for specific groups of "Top Secret" Espionage Section of Special Section not included. Also designated groups are:

- Pro-Tito Yugoslavs

5/15/54  
(5)



UNITED STATES GOVERNMENT

Memorandum

TO :

DATE: 9-23-69

FROM :

SUBJECT: SECURITY INDEX

During the past week, 9 cards were added to the Security Index and 27 cards were cancelled, a net increase of 18 cards.

The Security Index count as of today is 12,142.

ACTION:

None. For your information.



LIST

UNITED STATES GOVERNMENT

# Memorandum

TO : Mr. [redacted] JFM

DATE: 9/22/60

FROM : Mr. [redacted]

SUBJECT: SECURITY INDEX LISTS

Enclosed herewith is one copy each of the following lists for transmittal to the SAC, Quantico, for storage with other vital records maintained by him:

- 1) Alphabetical list of Security Index (SI) subjects.
- 2) Geographical list of SI subjects.
- 3) Special Section of the SI.
- 4) List of key figures and top functionaries.
- 5) List of SI subjects out of the country.
- 6) List of missing SI subjects.
- 7) List of subjects whose citizenship status is unknown.
- 8) List of aliens.
- 9) List of SI subjects of Chinese descent.
- 10) List of SI subjects sympathetic to communist China.

The SAC should destroy by burning the lists provided in August, 1960. When this action has been taken, he should so note on this memorandum and return it to the Subversive Control Section.

ACTION:

If you approve, this memorandum and the attached lists will be forwarded to Quantico for the above action.

Enclosures  
100-358086

1 - SAC, Quantico  
1 - Mr. [redacted]

HPI/haw  
(3)

51 OCT 5 1960

REC-4

EX-121

*Sub*  
*100-358086-*

SEP 23 1960

Handled at Quantico  
9-22-60 (33)



UNITED STATES GOVERNMENT

*Memorandum*

2801

DATE: 9/21/60

TO :

FROM :

SUBJECT: SECURITY INDEX CARD STATISTICS

There are 12,171 persons represented in the Security Index (as of September 15, 1960). Of the total, 10,358 or 85.1 per cent are communists.

A detailed table, enclosed in duplicate, shows as of September 15, 1960, the distribution of the subjects by field office, ideological tendencies, dangerousness, sex, race, citizenship, and "special lists." A key to abbreviations is enclosed.

Enclosures

KEY TO ABBREVIATIONS USED IN SECURITY INDEX

AL Alien  
DC Detcom  
KF Key Figure  
NA Naturalized  
  
NB Native Born  
TF Top Functionary  
UN Unknown  
AEP Atomic Energy Program Employees  
  
COM Communist Party, USA  
ESP Espionage Subjects  
FGE Foreign Government Employees  
  
GOV United States Government Employees  
ISL Independent Socialist League  
JFG Johnson Forest Group  
  
NOI Nation of Islam  
MIS Miscellaneous  
NPR Nationalistic Party of Puerto Rico  
PPA Proletarian Party of America  
  
RUS Russian  
ASC American Socialist Clubs  
SWP Socialist Workers' Party  
UNE United Nations Employees  
  
UPR Union of the People for the Establishment  
of the Republic of Puerto Rico  
YUG Yugoslavian







UNITED STATES GOVERNMENT

*Memorandum*

TO :

DATE: September 9, 1960

FROM : DIVISION OF TRAINING COMMITTEE

SUBJECT: SUGGESTION NUMBER 106-61

Training and Inspection Division has requested Domestic Intelligence Division comments regarding the suggestion of SA Los Angeles, that Bureau adopt a proposed form FD 305a, blue in color, for use in reports in Reserve Index program. The Committee feels that the proposed form will be of definite value and should be adopted.

The proposed form is similar to FD 305 which is used in submitting reports relating to Security Index subjects. FD 305 contains numerous items which relate to all Security subjects. For instance, it shows whether consideration has been given to the use of a T symbol, whether subject is employed in a key facility, and if so, what other agencies are interested. FD 305 also shows the reason for classifying a report and the reason for not interviewing or re-interviewing a subject.

At the present time all of the above items must be typed by a stenographer on the Administrative Pages of reports on persons other than Security Index subjects, and by having a form available such as proposed, time and money would be saved in the dictation and transcribing of this material. The form also would tend to insure that all pertinent items are considered by the Agent preparing his report and would aid the supervisor in reviewing it.

RECOMMENDATION:

That the above comments in favor of adoption of this suggestion be directed to the attention of the Training and Inspection Division.

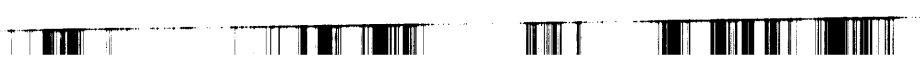
TO: SAC, Los Angeles

FROM: SAC, Los Angeles

RE: [Illegible text]

cc: SAC, Los Angeles

LOS ANGELES, CALIF. [Illegible]



Sept 27, 1960

MEMORANDUM

John F. Kennedy  
Los Angeles, California

Dear

has forwarded to me your suggestion that a form be prepared for use in the Reserve Index Program. I am having a special study made of your idea, and when the necessary work has been completed, I will certainly advise you.

The interest which prompted you to make this suggestion is very much appreciated.

Sincerely yours,  
J. Edgar Hoover

MAILED 9  
SEP 27 1960  
COMM-FBI

1 - SAC, Los Angeles

(Suggestion 100-61, dated 8-29-60)

(4)

NOTE: Referred to the Domestic Intelligence Division for views and recommendations.

UNITED STATES GOVERNMENT

*Memorandum*

TO :

DATE: September 30, 1966

FROM :

SUBJECT: SECURITY INDEX

During the past week, 9 cards were added to the Security Index and 36 cards were cancelled, a net decrease of 27 cards.

The Security Index count as of today is 12,122.

Remarks:

None. For your information.





2506

Memorandum for  
Re: RESERVE INDEX

SAC of the Charlotte Office expressed the opinion that in some instances when handling incoming mail on Reserve Index cases it may be necessary for the supervisor to know if a subject is on the Reserve Index, particularly Section A. In such cases, a stamp would be a convenient flag to place the supervisor on notice. However, as Charlotte has such a small number of subjects on the Reserve Index, he did not feel stamping file covers would be of material assistance as these cases are well-known to the supervisor.

Security Supervisor of the New York Office, who assisted in the Baltimore inspection, expressed the opinion that in the New York Office the stamping procedure would be of assistance to the desk supervisor. He said there would be occasions when the desk supervisor in reviewing incoming mail designated for a Reserve Index case file would have to review the entire file to determine if the subject was on the Reserve Index, or would have to call for clerical assistance to check the index file. He believed there would be many occasions when the initialing of incoming mail into a case file of a Reserve Index subject could be facilitated through stamping the case file. It is to be noted the largest volume of Reserve Index cases are in the New York office.

RECOMMENDATION:

(1) That the stamping of Reserve Index files be continued and show whether it is Reserve Index A or B.

(2) That this memorandum be routed to Domestic Intelligence Division which requested this information.

UNITED STATES GOVERNMENT

# Memorandum

DATE: September 26, 1960

TO :

FROM :

SUBJECT: MEMPHIS  
RESERVE INDEX

Memorandum for [redacted] dated  
September 21, 1960. Attached "Reserve Index" attached,  
recommends that reserve index [redacted] be  
to [redacted] in [redacted] is included  
in Section 1 of [redacted] of the Reserve Index. Implementation  
of this recommendation requires issuance of a SAC Letter.

ACTION:

Proposed SAC Letter attached for approval. No  
manual changes necessary.

Enclosures - *Reserve Index*





UNITED STATES GOVERNMENT

# Memorandum

DATE: OCTOBER 7, 1965

TO :

FROM :

SUBJECT: SECURITY INDEX

During the past week, 7 cards were  
added to the Security Index. The  
total number of cards is  
12,104.

The Security Index count as of today  
is 12,104.

ATTN:

None. For your information.



10/4/60

SECRET

(F) SECURITY INVESTIGATIONS OF INDIVIDUALS - RESERVE INDEX --  
Re SAC Letter 60-30 (C) dated June 21, 1960.

Stamp file covers of Reserve Index cases RI-A in  
Section A cases and RI-B in Section B cases.

Stamps for this purpose should be purchased locally.

10/4/60  
SAC LETTER NO. 60-46

153





UNITED STATES GOVERNMENT

# Memorandum

2809

DATE: October 14, 1969

TO:

FROM:

SUBJECT: SECURITY INDEX

The following is a report on the change in the Security Index for the week ending October 14, 1969, to you (Sept. 4, 1969):

Week of:

|                 |
|-----------------|
| September 12-16 |
| September 19-23 |
| September 26-30 |
| October 3-7     |
| October 10-14   |
| Total           |

|    |
|----|
| 9  |
| 9  |
| 9  |
| 7  |
| 0  |
| 43 |

|     |
|-----|
| 3   |
| 27  |
| 36  |
| 7   |
| 7   |
| 141 |

|     |
|-----|
| -23 |
| -10 |
| -27 |
| -10 |
| -10 |
| -80 |

During the above-mentioned period, there was a net decrease in the Security Index of 78.

For your information, during the preceding four-week period, 41 cars were added to the index and 119 cars were cancelled, resulting in a net decrease of 78.

The Security Index stands at 12,092.

12,092.

ACB:MM

This is for your information.

25 OCT 17 1969

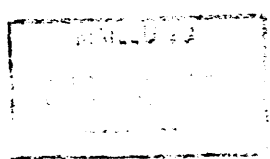


October 6, 1949

Special Agent in Charge  
Milwaukee, Wisconsin

Enclosed for you are two copies of the report of the  
Milwaukee office dated 9/27/49, which contains information  
regarding the activities of the Milwaukee office.

The interest which you have in this  
suggestion is very much appreciated.



Sincerely yours,  
[Signature]

1 - SAC, Milwaukee

(Suggestion #100-61, dated 9/27/49)

NOTE: Referred to the Domestic Intelligence Division for views  
and recommendation.

11-11-60  
210  
(234)

Date  
9-27-60  
Division of Assignment  
Milwaukee

To: Director, FBI

From: (Suggester's name)  
SA

SUGGESTION  
Change Form FD 122 into Form FD 122A by adding two check blocks at the top of page for checking that a "Section II" Reserve Index Card be prepared or that a "Section II" Reserve Index Card be checked, in addition to the two check blocks relative to the Security Index Card which already appear on FD 122. Copies of changed FD 122 enclosed.

Current practice or rule (include manual citation as well as facts)  
An FD-122 is used for the Security Index; an FD-122A is used for the Reserve Index.

Advantages of suggestion and annual savings (include basis for estimate)  
Two similar forms are now used, where one consolidated form would suffice. Eliminating the form FD-122A would also aid in elimination of the possibility of error in displaying the improper form for either the SI or Reserve Index. Savings cannot be estimated by age field division.

Disposal of suggestions  
Current forms FD-122 A cards have to be depleted or destroyed.  
Current forms FD-122 would have to be depleted or destroyed.

(The use by the United States of any suggestion shall not form the basis of a former claim of any nature by me, my heirs, or assigns upon the United States)

Mr.  Mrs.  Miss

Signature and Title of Suggester  
[Signature] SAC

Recommendations and comments of Division Head  
This suggestion appears to have merit. Favorable consideration is recommended.

Signature and Title  
[Signature] SAC

(Do not write in this space)  
14 ENCLOSURE

Office Memorandum • UNITED STATES GOVERNMENT

TO : Director, FBI

DATE:

FROM : SAC,

SUBJECT: It is recommended that a "Section 87" Security Index Card be prepared on the above-captioned individual.

It is recommended that a Security Index Card be prepared on the above-captioned individual.

It is recommended that a Security Index Card be prepared on the above-captioned individual.

The Security Index Card on the captioned individual should be changed as follows: (specify change only)

|   |  |   |
|---|--|---|
| Name  |  |   |
| Aliases   |  |   |
| <input type="checkbox"/> Native born                          | <input type="checkbox"/> Naturalized             | <input type="checkbox"/> Alien                                    |
| <input type="checkbox"/> Communist                            | <input type="checkbox"/> Socialist Workers Party | <input type="checkbox"/> Independent Socialist League             |
| <input type="checkbox"/> Miscellaneous (specify) _____        |  |   |
| <input type="checkbox"/> Ex-Comm                              | Race   | Sex <input type="checkbox"/> Male <input type="checkbox"/> Female |
| Date of Birth   | Place of Birth                                   |   |
| Business Address (show name of employing concern and address) |  |   |
| Key Facility Data   |  |   |
| Geographical Reference Number _____                           |  | Responsibility _____  |
| Interested Agencies _____                                     |  |   |
| Residence Address   |  |   |

REGISTERED MAIL

ENCLOSURE



UNITED STATES GOVERNMENT

# Memorandum

TO : Director, FBI (Bufile-

) DATE:

FROM : SAC,

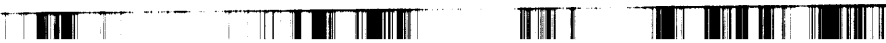
SUBJECT:

It is recommended that a Security Index Card be prepared on the above-captioned individual.

The Security Index Card on the captioned individual should be changed as follows (specify change only):

|   |  |   |
|---|--|---|
| Name  |  |   |
| Aliases   |  |   |
| <input type="checkbox"/> Native Born                          | <input type="checkbox"/> Naturalized             | <input type="checkbox"/> Alien                                    |
| <input type="checkbox"/> Communist                            | <input type="checkbox"/> Socialist Workers Party | <input type="checkbox"/> Independent Socialist League             |
| <input type="checkbox"/> Miscellaneous (specify) _____        |  |   |
| <input type="checkbox"/> Top for Detcom                       | Race _____                                       | Sex <input type="checkbox"/> Male <input type="checkbox"/> Female |
| Date of Birth _____   | Place of Birth _____                             |   |
| Business Address (show name of employer, concern and address) |  |   |
| Key Facility Data   |  |   |
| Geographical Reference Number _____ Responsibility _____      |  |   |
| Interested Agencies _____                                     |  |   |
| Residence Address   |  |   |

REGISTERED MAIL





# Memorandum

TO : Director, FBI (Circle)

DATE:

FROM :

SUBJECT:

It is recommended that a "Section A" Reserve Index Card be prepared on the above-captioned individual.

The "Section A" Reserve Index Card on the captioned individual should be changed to reflect (specify change only):

|   |  |                                |   |
|---|--|--------------------------------|---|
| Name  |  |                                |   |
| Aliases   |  |                                |   |
| <input type="checkbox"/> Native Born                              | <input type="checkbox"/> Naturalized             | <input type="checkbox"/> Alien |   |
| <input type="checkbox"/> Communist                                | <input type="checkbox"/> Socialist Workers Party |                                |   |
| <input type="checkbox"/> Miscellaneous (specify)                  |  |                                |   |
| Date of birth   | Place of birth                                   | Race                           | Sex<br><input type="checkbox"/> Male<br><input type="checkbox"/> Female |
| Business address (include name of company, telephone and address) |  |                                |   |
| Key Factory Data  |  |                                |   |
| Geographical Reference Number                                     |  | Responsibility                 |   |
| Interested Agencies   |  |                                |   |
| Residence Address   |  |                                |   |



Memorandum

TO :

DATE: 10-6-60

FROM : DIVISION STAFF

SUBJECT: SECURITY INDEX

Domestic Intelligence Division (DID) comments have been requested regarding submission of SA [redacted] dated 9-27-60, of [redacted] proposed [redacted] for preparation of a "Section 1" Reserve Index card, or to change such a card. [redacted] is the [redacted] of the Bureau [redacted] concerned with the preparation of changing of a Security Index card. [redacted] feels that the [redacted] form would [redacted] use in connection with the two systems and that [redacted] of [redacted] would [redacted] to eliminate possibility of error [redacted] [redacted] form for either Security Index or Reserve Index. [redacted] recommends favorable consideration stating this suggestion appears to have merit.

The [redacted] is primarily concerned with handling of [redacted] and [redacted] forms. It has been found that in [redacted] 1960, [redacted] utilization of similar forms for the Reserve Index and the Security Index. It should be noted that the Reserve Index is composed of those individuals with subversive affiliations not [redacted] for inclusion in the Security Index. When the matter was previously considered in June, 1960, it was felt that the use of separate forms for the Security Index and Reserve Index was desirable in order to [redacted] in the Bureau scheduling for apprehension an individual whose name should only be included in the Reserve Index and vice versa. Accordingly, it was recommended and approved that [redacted] for the Reserve Index, and that the color of this form be blue to correspond with the blue paper used on the Reserve Index cards.

In view of the above consideration previously given to the idea of using one form, the Committee feels that the suggestion of SA [redacted] does not have sufficient merit to warrant [redacted].

Enclosure

- 1-
- 1-Training & Inspection (Suggestion Book)
- 1-
- 1-
- 1-

17 OCT 13 1960

10-10-60



Memorandum Division Streamlining Committee to  
RE: SUGGESTION NUMBER 109-61

It is noted that if his suggestion were adopted, it would be necessary to order for all the currently available stock of FD-122 and FD-122A forms or wait until they have been depleted before putting the suggestion into effect.

RECOMMENDATION:

This memorandum regarding DID as opposed to the adoption of the above suggestion be forwarded to the Training and Inspection Division, Suggestion Desk.

ADDENDUM:

12/13/60

Attached as exhibit A is a copy of form FD-122 and attached as exhibit B is a copy of form FD-122A. There is also attached a copy of the suggested form for your information. For reasons indicated by the Domestic Intelligence Division, the Training and Inspection Division is opposed to adopting this suggestion.

RECOMMENDATION:

That this suggestion not be adopted for reasons indicated in this memorandum. Upon approval, no further action is necessary since SA [redacted] has been previously thanked for making this suggestion.

UNITED STATES GOVERNMENT

# Memorandum

DATE: \_\_\_\_\_

TO :

FROM :

SUBJECT: \_\_\_\_\_

MEMORANDUM:

... ..

In September, there was a ... ..  
... ..

Letters ... ..  
... ..

RECOMMENDATION:

The field will continue to ... ..  
... ..



DETAILS:

The September, 1960, administrative report on all cases indicates that the total number of cases classified as 65, 100 and 105 increased from 17,000 to 19,432. Delinquent items increased from 1,646 to 2,207. The percentage of delinquent items increased from 9.7% to 11.3%.

The following statistics show the status of pending work, including both pending and delinquent items, by agency for all field divisions for the last four months.

TOTAL PENDING MATTERS  
CLASSIFIED 65, 100 AND 105  
ALL FIELD DIVISIONS

| Classification | 6/30/60 | 7/31/60 | 8/31/60 | 9/30/60 |
|----------------|---------|---------|---------|---------|
| 65             | 537     | 546     | 623     | 643     |
| 100            | 11,235  | 12,540  | 12,374  | 12,517  |
| 105            | 7,660   | 7,316   | 7,844   | 8,121   |
| Total          | 19,432  | 20,478  | 21,181  | 21,281  |

TOTAL DELINQUENT MATTERS  
CLASSIFIED 65, 100 AND 105  
ALL FIELD DIVISIONS

| Classification | 6/30/60 | 7/31/60 | 8/31/60 | 9/30/60 |
|----------------|---------|---------|---------|---------|
| 65             | 15      | 17      | 11      | 22      |
| 100            | 703     | 1,032   | 1,320   | 1,507   |
| 105            | 527     | 603     | 507     | 710     |
| Total          | 1,323   | 1,682   | 1,846   | 2,237   |



CONFIDENTIAL  
 BY: [illegible]

The following statistics show the number of delinquency cases, by month, in the [illegible] offices during the past six months.

CLASSIFICATION BY MONTH

| DATE    | Number of Cases | Percentage |
|---------|-----------------|------------|
| 4/30/60 | 18,300          | 9.3%       |
| 5/31/60 | 19,000          | 7.7%       |
| 6/30/60 | 18,200          | 9.7%       |
| 7/31/60 | 19,300          | 11.6%      |
| 8/31/60 | 19,400          |            |
| 9/30/60 | 19,400          |            |

Number of Delinquency Cases in [illegible] Office

Such statistics are reported to the [illegible] of delinquency on September 30, 1960, in total number of [illegible] 65, 100 and 143. These statistics show the progress during September, 1960.



SECRET

| City          | 1957 | 1958 | 1959 | 1960  |
|---------------|------|------|------|-------|
| Albany        | 279  | 273  |      | 14.0% |
| Albuquerque   | 1176 | 4778 |      | 11.0% |
| *NEW YORK     | 93   | 114  |      | 10.0% |
| Denver        | 100  | 100  |      | 9.0%  |
| Des Moines    | 175  | 200  |      | 7.0%  |
| Detroit       | 76   | 98   |      | 3.0%  |
| *New Orleans  | 790  | 888  |      | 10.0% |
| Portland      | 189  | 193  |      | 11.0% |
| San Antonio   | 280  | 200  |      | 7.0%  |
| *Indianapolis | 454  | 426  |      | 7.0%  |
| *Kansas City  | 304  | 407  |      | 12.0% |
| *St. Louis    | 304  | 720  |      | 10.0% |
| *Cleveland    | 98   | 100  |      | 0.0%  |
| Portland      | 83   | 83   |      | 5.0%  |
| Oklahoma City | 89   | 82   |      | 2.0%  |
| Butte         | 406  | 409  |      | 6.0%  |
| Seattle       | 389  | 374  |      | 7.0%  |
| New Haven     | 262  | 204  |      | 0.0%  |
| San Juan      | 301  | 111  |      | 3.0%  |
| Boston        | 100  | 111  |      | 2.0%  |
| San Francisco | 100  | 100  |      | 4.0%  |
| Charlotte     | 52   | 83   |      | 0.0%  |
| Richmond      | 100  | 64   |      | 3.0%  |
| Omaha         | 100  | 261  |      | 5.0%  |
| Minneapolis   | 100  | 100  |      | 2.0%  |
| Springfield   | 100  | 100  |      | 7.0%  |
| Louisville    | 100  | 100  |      | 3.0%  |
| Memphis       | 100  | 100  |      | 3.0%  |
| Tampa         | 100  | 34   |      | 6.0%  |
| Norfolk       | 36   |      |      |       |

\*Letter being sent re delinquent status.



Memorandum FOR  
 THE DIRECTOR OF THE FEDERAL BUREAU OF INVESTIGATION

| Office         | Active Letters |         | Approved |         |
|----------------|----------------|---------|----------|---------|
|                | 8/31/50        | 7/31/50 | 8/31/50  | 7/31/50 |
| Albuquerque    | 62             | 101     | 0.0%     | 2.0%    |
| Baltimore      | 61             | 78      | 0.0%     | 1.0%    |
| Birmingham     | 35             | 41      | 5.7%     | 2.4%    |
| Butte          | 15             | 17      | 0.0%     | 0.0%    |
| Cincinnati     | 141            | 146     | 10.0%    | 1.0%    |
| Cleveland      | 42             | 42      | 0.0%     | 1.0%    |
| Flourish       | 53             | 51      | 0.0%     | 1.0%    |
| San Diego      | 125            | 100     | 7.0%     | 1.0%    |
| Portland       | 100            | 100     | 14.0%    | 1.0%    |
| San Francisco  | 38             | 27      | 9.1%     | 0.0%    |
| Seattle        | 38             | 27      | 0.0%     | 0.0%    |
| San Antonio    | 20             | 36      | 0.0%     | 0.0%    |
| San Jose       | 23             | 23      | 0.0%     | 0.0%    |
| Honolulu       | 60             | 55      | 18.3%    | 0.0%    |
| Jacksonville   | 13             | 16      | 7.7%     | 0.0%    |
| Memphis        | 19             | 16      | 10.5%    | 0.0%    |
| Little Rock    | 37             | 27      | 10.0%    | 0.0%    |
| Los Angeles    | 46             | 46      | 6.0%     | 1.0%    |
| Phoenix        | 60             | 58      | 3.3%     | 0.0%    |
| Salt Lake City | 30             | 32      | 0.0%     | 0.0%    |
| Dayton         |                |         |          |         |





# Memorandum

TO :

DATE: 10/10/54

FROM :

SUBJECT :

1. The attached report, dated 10/10/54, is a copy of the report of the Special Agent in Charge, New York, dated 10/10/54, regarding the activities of the Communist Party, New York, in the city of New York.

2. The report contains information regarding the activities of the Communist Party, New York, in the city of New York, and is being furnished to you for your information.

Very truly yours,  
[Signature]

Special Agent in Charge, New York



[Redacted]

[Redacted]

NOTE: Classified as per [redacted] of "Top Secret" [redacted] Espionage Division or Special Access [redacted] are:

Foreign Government Employees  
United Nations Employees

REG 50 [redacted]

(S)

[Redacted]

[Redacted]

